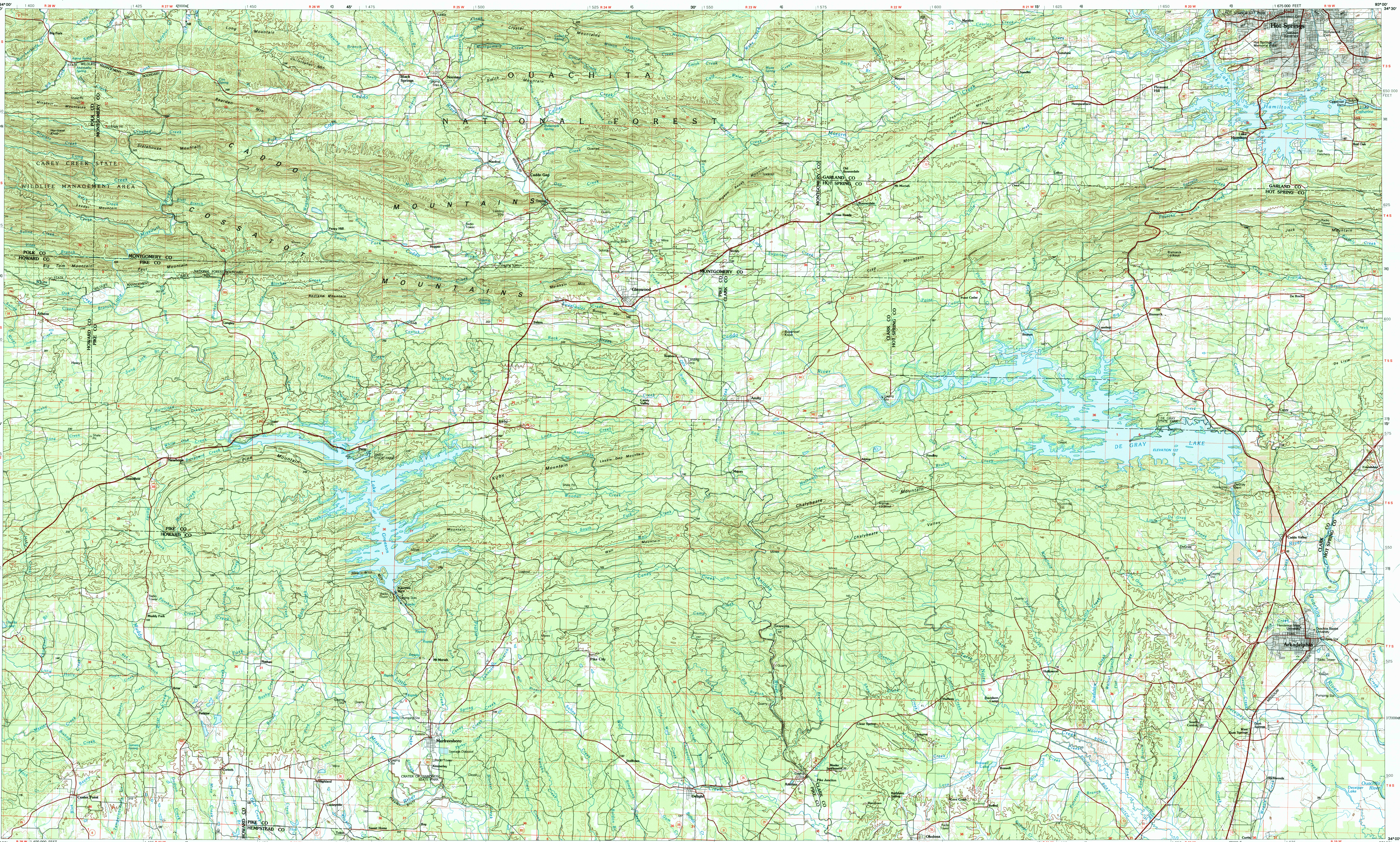


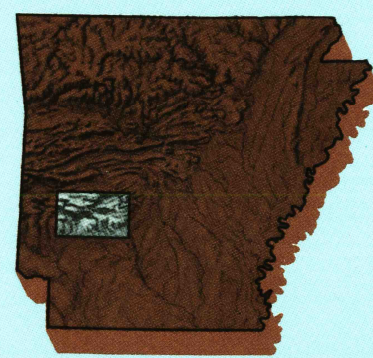
ARKADELPHIA, ARKANSAS

30x60 MINUTE SERIES (TOPOGRAPHIC)



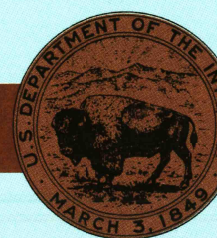
Arkadelphia
ARKANSAS

1:100 000-scale metric
topographic map



30 X 60 MINUTE QUADRANGLE
SHOWING

- Contours and elevations in meters
- Highways, roads and other manmade structures
- Water features
- Woodland areas
- Geographic names



GEOLOGICAL SURVEY

1986

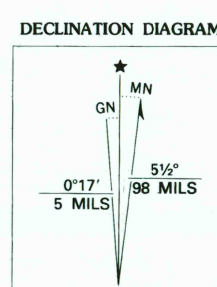
Produced by the United States Geological Survey
Compiled from USGS 1:24 000-scale topographic maps dated 1959-1986. Planimetry revised from aerial photographs taken 1983 and other source data. Revised information not field checked. Map edited 1986
Projection and 10 000-meter grid, zone 15,
Universal Transverse Mercator
25 000-foot grid ticks based on Arkansas coordinate system, south zone
1927 North American Datum
To place on the predicted North American Datum 1983, move the projection lines 8 meters south and 17 meters east
There may be private inholdings within the boundaries of the National or State reservations shown on this map

CONTOUR INTERVAL 20 METERS
SUPPLEMENTARY CONTOUR INTERVAL 5 METERS
NATIONAL GEODESIC VERTICAL DATUM OF 1929
ELEVATIONS SHOWN TO THE NEAREST METER

THIS MAP COMPLIES WITH NATIONAL MAP ACCURACY STANDARDS

CONVERSION TABLE	
Meters	Feet
1	3.2808
2	6.5617
3	9.8425
4	13.1234
5	16.4042
6	19.6850
7	22.9659
8	26.2467
9	29.5276
10	32.8084

To convert meters to feet multiply by 3.2808
To convert feet to meters multiply by 0.3048



UTM grid convergence (GM) and 1983 magnetic declination (MD) at center of map
Diagram is approximate

ADJOINING MAPS		
1	2	3
4	5	
6	7	8

1 Mena
2 Lake Ouachita
3 Little Rock
4 De Queen
5 Malvern
6 Label
7 Hope
8 Camden

FOR SALE BY U.S. GEOLOGICAL SURVEY
DENVER, COLORADO 80225, OR RESTON, VIRGINIA 22092

USGS TIMO HISTORICAL MAP

SEP 20 1988

REC'D FILE COPY

Topographic Map Symbols

- Primary highway, hard surface
- Secondary highway, hard surface
- Light duty road, principal street, hard or improved surface
- Other road or street, trail
- Road marker: Interstate, U.S. State
- Railroad: standard gauge, narrow gauge
- Bridges: overpass, underpass
- Tunnel: road, railroad
- Built up area, locality, elevation
- Airport, landing field, landing strip
- National boundary
- State boundary
- County boundary
- National or State reservation boundary
- Land grant boundary
- U.S. public lands survey maps: township, section
- Range, township, section line: grouted
- Power transmission line: pipeline
- Dam; dam with lock
- Cemetery, building
- Wellhead; water well, spring
- Mine shaft, pit, or cave; quarry, gravel pit
- Campground; picnic area; U.S. location monument
- Ruin; cliff dwelling
- Distorted surface: strip mine, lava, sand
- Contours: index, intermediate, supplementary
- Bathymetric contours: index, intermediate
- Stream, lake, perennial, intermittent
- Rapids, large and small; falls, large and small
- Area to be submerged; marsh, swamp
- Land subject to controlled inundation, woodland
- Straw, mangrove
- Orchard; vineyard

A pamphlet describing topographic maps is available on request

ARKADELPHIA, ARKANSAS

34093-A1-TM-100

1986