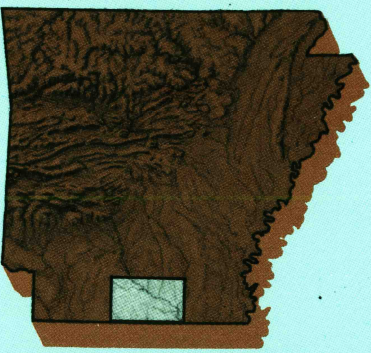


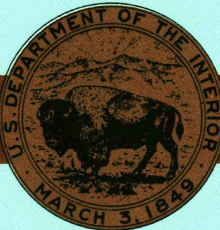
El Dorado
ARKANSAS-LOUISIANA

1:100 000-scale metric
topographic map



30 X 60 MINUTE QUADRANGLE
SHOWING

- Contours and elevations in meters
- Highways, roads and other manmade structures
- Water features
- Woodland areas
- Geographic names



GEOLOGICAL SURVEY

1985

Produced by the United States Geological Survey
Compiled from USGS 1:24 000-scale topographic maps dated 1962-1981. Planimetry revised from aerial photographs taken 1983 and other source data. Revised information not field checked. Map edited 1985

Projection and 10 000-meter grid, zone 15, Universal Transverse Mercator
25 000-foot grid ticks based on Arkansas coordinate system, south zone and Louisiana coordinate system, north zone 1927 North American Datum
To place on the predicted North American Datum 1983, move the projection lines 11 meters south and 14 meters east
There may be private inholdings within the boundaries of the National or State reservations shown on this map

CONTOUR INTERVAL 10 METERS
SUPPLEMENTARY CONTOUR INTERVAL 5 METERS
NATIONAL GEODETIC VERTICAL DATUM OF 1929
ELEVATIONS SHOWN TO THE NEAREST METER

THIS MAP COMPLIES WITH NATIONAL MAP ACCURACY STANDARDS

CONVERSION TABLE		DECLINATION DIAGRAM	ADJOINING MAPS				
Meters	Feet		1	2	3	4	5
1	3.2808		1	2	3	4	5
2	6.5617		1	2	3	4	5
3	9.8425		1	2	3	4	5
4	13.1234		1	2	3	4	5
5	16.4042		1	2	3	4	5
6	19.6850		1	2	3	4	5
7	22.9658		1	2	3	4	5
8	26.2467		1	2	3	4	5
9	29.5275		1	2	3	4	5
10	32.8084		1	2	3	4	5
To convert meters to feet multiply by 3.2808		UTM grid convergence (CM) and 100 magnetic declination (MM) at center of map					
To convert feet to meters multiply by 0.3048		Diagram is approximate					

FOR SALE BY U.S. GEOLOGICAL SURVEY
DENVER, COLORADO 80225, OR RESTON, VIRGINIA 22092

USGS NM Historical Map
SEP 15 1988
REC'D FILE COPY

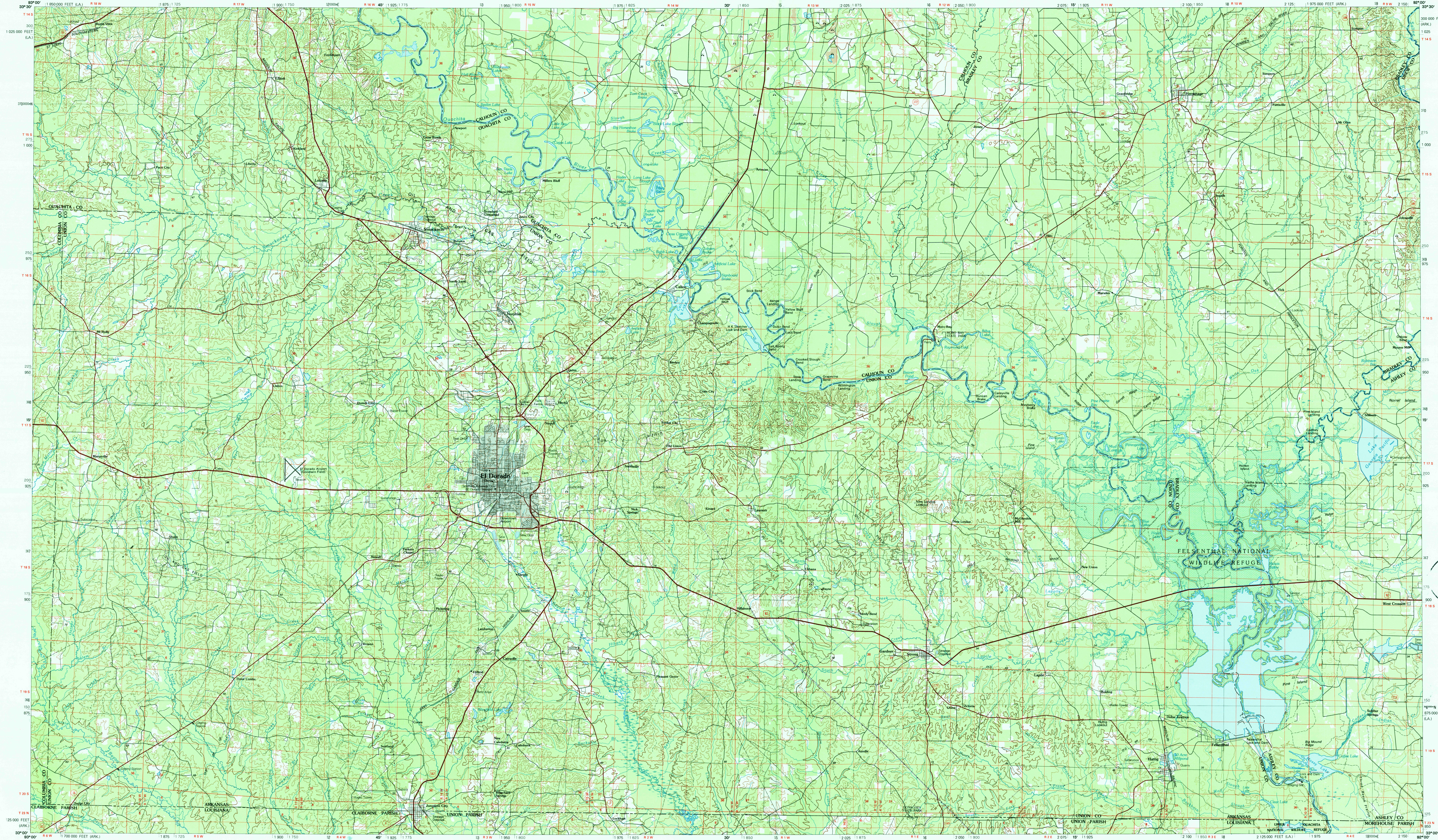
Topographic Map Symbols

Primary highway, hard surface	
Secondary highway, hard surface	
Light duty road, gravel street, hard or improved surface	
Other road or street, trail	
Route marker: Interstate, U.S. State	
Railroad: standard gauge, narrow gauge	
Bridge: overpass, underpass	
Tunnel: road, railroad	
Built up area, locality, elevation	
Airport, landing field, landing strip	
National boundary	
State boundary	
County boundary	
National or State reservation boundary	
Land grant boundary	
U.S. public lands survey: range, township, section	
Range, township, section line: protracted	
Power transmission line; pipeline	
Dam; dam with lock	
Cemetery; building	
Windmill; water well; spring	
Mine shaft; pit or cave; mine, quarry, gravel pit	
Campground; picnic area; U.S. location monument	
Ruins; cliff dwelling	
Distorted surface: strip mine, lava, sand	
Contours: index, intermediate, supplementary	
Bathymetric contours: lake, intermediate	
Stream, lake, perennial, intermittent	
Rapids, large and small; falls, large and small	
Area to be submerged; marsh, swamp	
Land subject to controlled inundation; woodland	
Soils: mapless	
Orchard; vineyard	

A pamphlet describing topographic maps is available on request

Sept. 15 1988

EL DORADO, ARKANSAS-LOUISIANA



• INTERIOR: GEOLOGICAL SURVEY, RESTON, VIRGINIA - 1985

KILOMETERS 1 0 1 2 3 4 5 6 7 8 9 10 11 12 13 14 15 16 17 18 19 20
MILES 1 0 1 2 3 4 5 6 7 8 9 10 11 12 13

SCALE 1:100 000

1 CENTIMETER ON THE MAP REPRESENTS 1 KILOMETER ON THE GROUND

CONTOUR INTERVAL 10 METERS
SUPPLEMENTARY CONTOUR INTERVAL 5 METERS

1000 0 5000 10000 15000 20000 25000 30000 40000 50000 60000 70000 FEET

EL DORADO, ARKANSAS-LOUISIANA

33092-A1-TM-100

1985