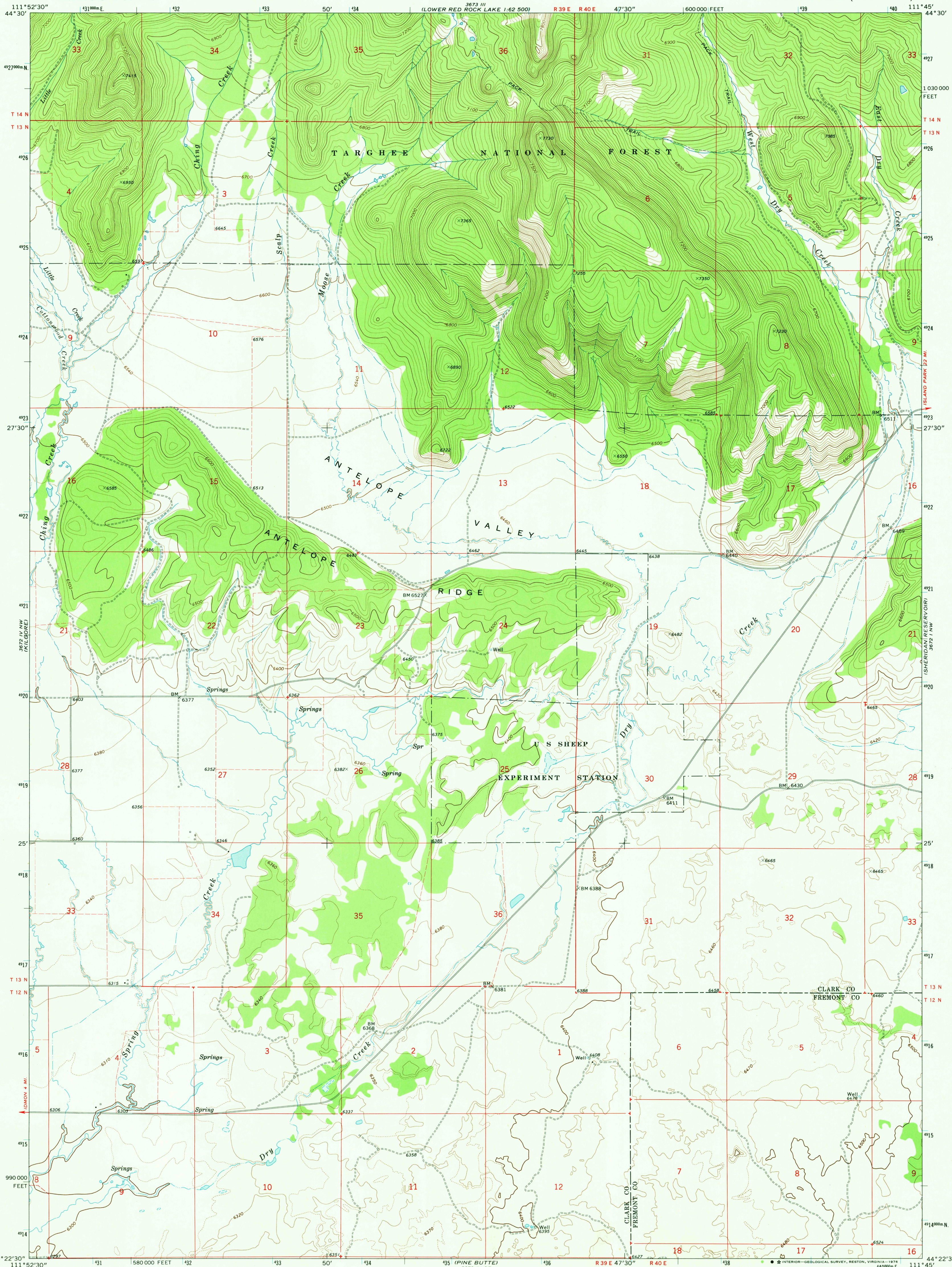
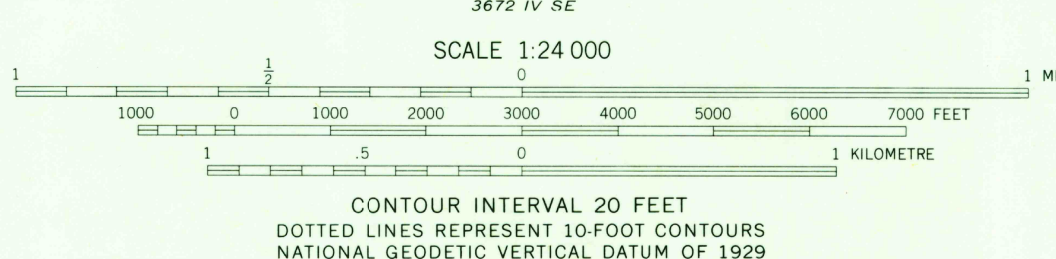
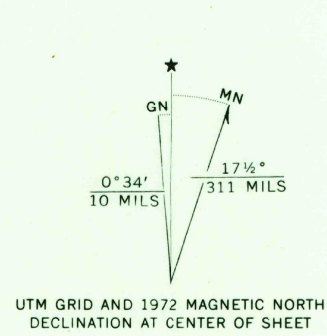


UNITED STATES
DEPARTMENT OF THE INTERIOR
GEOLOGICAL SURVEY

ANTELOPE VALLEY QUADRANGLE
IDAHO
7.5 MINUTE SERIES (TOPOGRAPHIC)



Mapped, edited, and published by the Geological Survey
Control by USGS and NOS/NOAA
Topography by photogrammetric methods from aerial
photographs taken 1971. Field checked 1972
Projection and 10,000-foot grid ticks: Idaho
coordinate system, east zone (transverse Mercator)
1000-metre Universal Transverse Mercator grid ticks,
zone 12, shown in blue. 1927 North American datum
Fine red dashed lines indicate selected fence lines
Where omitted, land lines have not been established



ROAD CLASSIFICATION
Primary highway, hard surface
Secondary highway, hard surface
Unimproved road
Light-duty road, hard or improved surface
Unimproved road
Interstate Route
U. S. Route
State Route

QUADRANGLE LOCATION
USGS
Historical File
Topographic Division
ANTELOPE VALLEY, IDAHO
N4422.5-W11145/7.5
1972
AMS 3672 IV NE-SERIES V893

THIS MAP COMPLIES WITH NATIONAL MAP ACCURACY STANDARDS
FOR SALE BY U.S. GEOLOGICAL SURVEY, DENVER, COLORADO 80225, OR RESTON, VIRGINIA 22092
A FOLDER DESCRIBING TOPOGRAPHIC MAPS AND SYMBOLS IS AVAILABLE ON REQUEST

DEC 16 1976