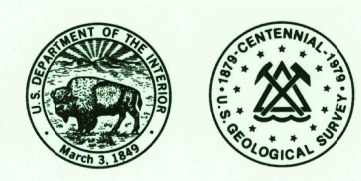


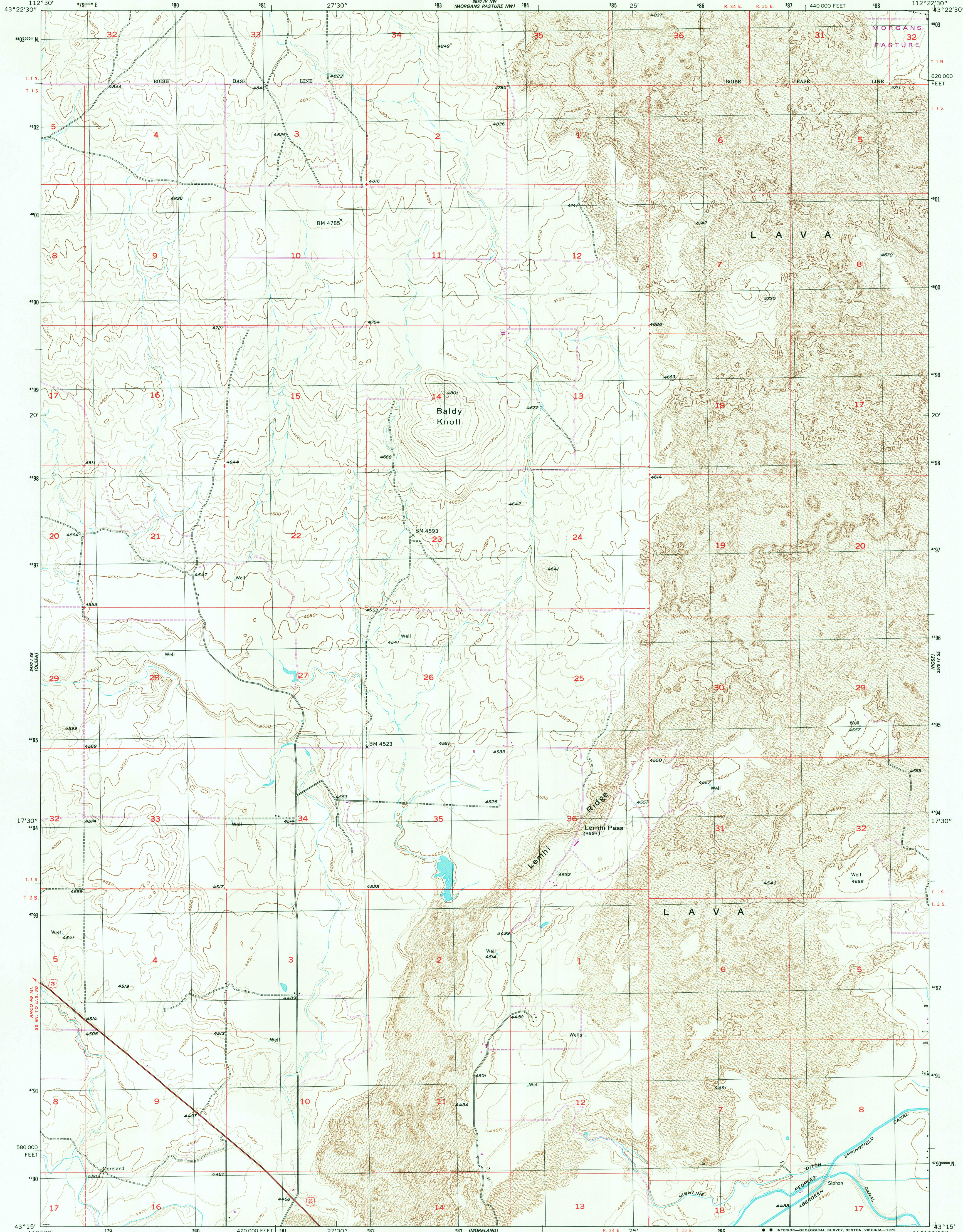
3400 SE
174000 E

UNITED STATES
DEPARTMENT OF THE INTERIOR
GEOLOGICAL SURVEY

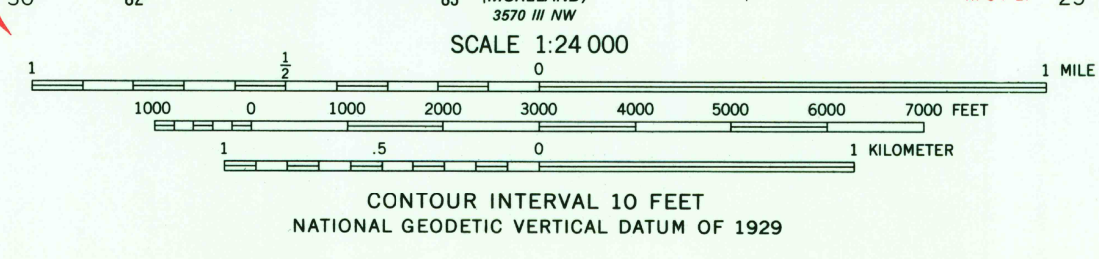
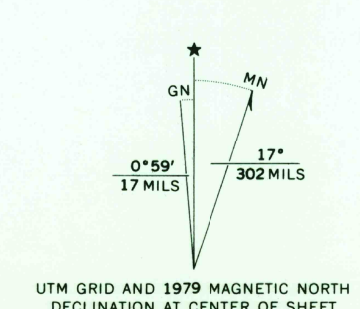


BALDY KNOLL QUADRANGLE
IDAHO-BINGHAM CO.
7.5 MINUTE SERIES (TOPOGRAPHIC)

3400 SE
174000 E



Mapped, edited, and published by the Geological Survey
Control by USGS and USC&GS
Topography from aerial photographs by Kelsh plotter
Aerial photographs taken 1950. Field check 1955
Projection and 10,000-foot grid ticks: Idaho coordinate
system, central zone (transverse Mercator)
1000-meter Universal Transverse Mercator grid, zone 12
1927 North American datum
To place on the predicted North American Datum 1983,
move the projection lines 12 meters north and
67 meters east as shown by dashed corner ticks
Revisions shown in purple compiled from aerial photographs
taken 1976 and other source data. This information not
field checked. Map edited 1979



ROAD CLASSIFICATION
Heavy-duty ——— Light-duty ———
Medium-duty ——— Unimproved dirt ———
U. S. Route ——— State Route ———

USGS
Historical File
Topographic Division

BALDY KNOLL, IDAHO
N4315-W11222.5/7.5
1955
PHOTOREVISED 1979
DMA 3570 IV SW-SERIES V893

APR - 7 1980
1700