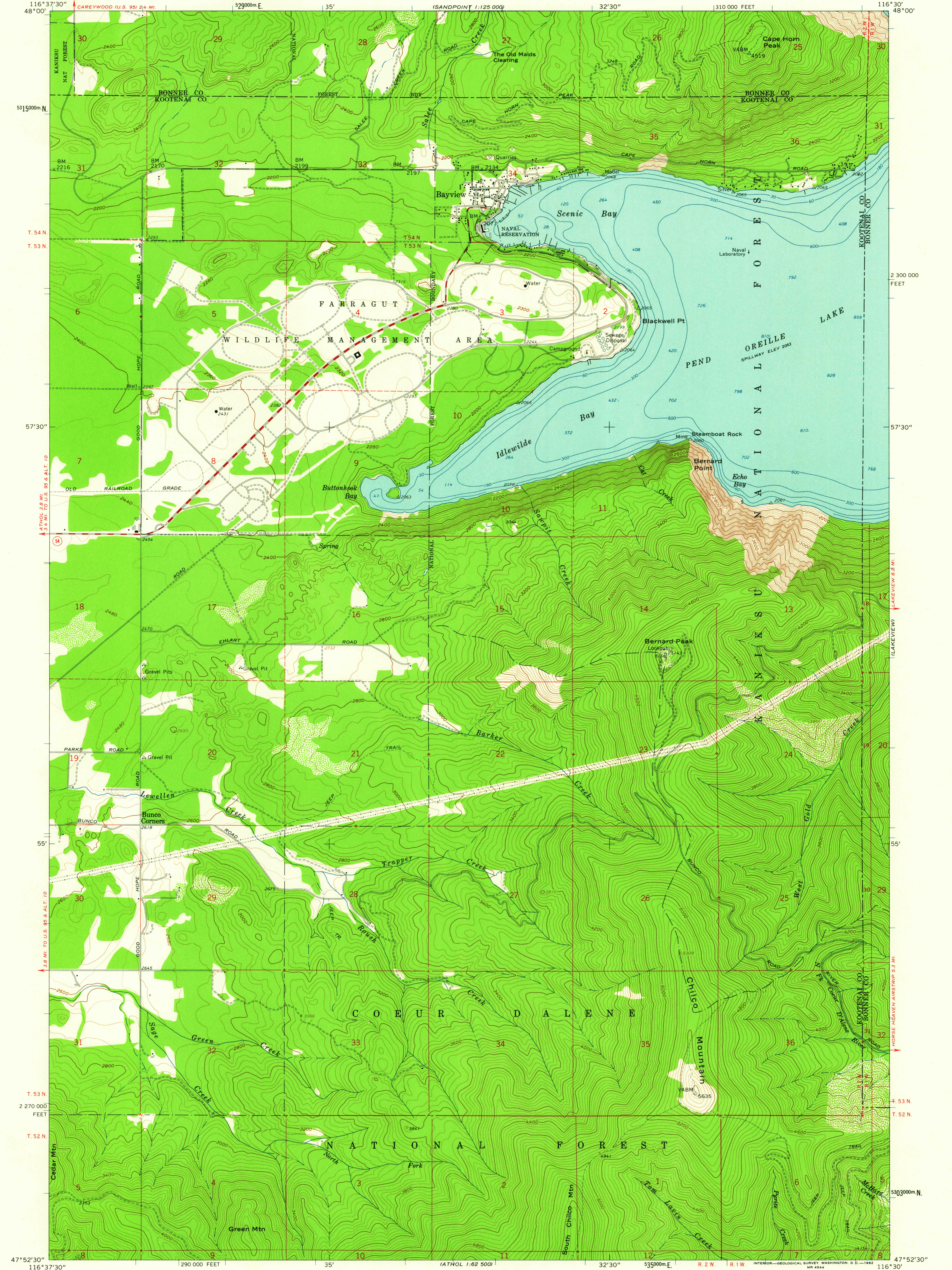


UNITED STATES  
DEPARTMENT OF THE INTERIOR  
GEOLOGICAL SURVEY

BAYVIEW QUADRANGLE  
IDAHO  
7.5 MINUTE SERIES (TOPOGRAPHIC)  
NE/4 ATOL 15' QUADRANGLE



Mapped, edited, and published by the Geological Survey  
Control by USGS and USC&GS  
Topography by photogrammetric methods from aerial  
photographs taken 1958 and planetable surveys 1961  
Selected hydrographic data compiled from USC&GS Chart 6170 (1958)  
This information is not intended for navigational purposes  
Polyconic projection, 1927 North American datum  
10,000-foot grid based on Idaho coordinate system, west zone  
1000-meter Universal Transverse Mercator grid ticks,  
zone 11, shown in blue  
Where omitted, land lines have not been established

TRUE NORTH  
MAGNETIC NORTH  
APPROXIMATE MEAN  
DECLINATION, 1961

SCALE 1:24,000  
1 0 1000 2000 3000 4000 5000 6000 7000 FEET  
1 5 10 KILOMETER  
CONTOUR INTERVAL 40 FEET  
DOTTED LINES REPRESENT 20-FOOT CONTOURS  
DATUM IS MEAN SEA LEVEL  
DEPTH CURVES AND SOUNDINGS IN FEET - DATUM IS LAKE ELEVATION 2048 FEET



ROAD CLASSIFICATION  
Medium-duty ——— Light-duty ———  
Unimproved dirt ———  
USGS  
Historical File  
Topographic Division  
State Route

BAYVIEW, IDAHO  
NE/4 ATOL 15' QUADRANGLE  
N4752.5-W11630.7.5

1961

FOR SALE BY U.S. GEOLOGICAL SURVEY, DENVER 25, COLORADO OR WASHINGTON 25, D. C.  
A FOLDER DESCRIBING TOPOGRAPHIC MAPS AND SYMBOLS IS AVAILABLE ON REQUEST

USGS  
FILE COPY  
TOPOGRAPHIC DIVISION

2720

Nov - 5 1962