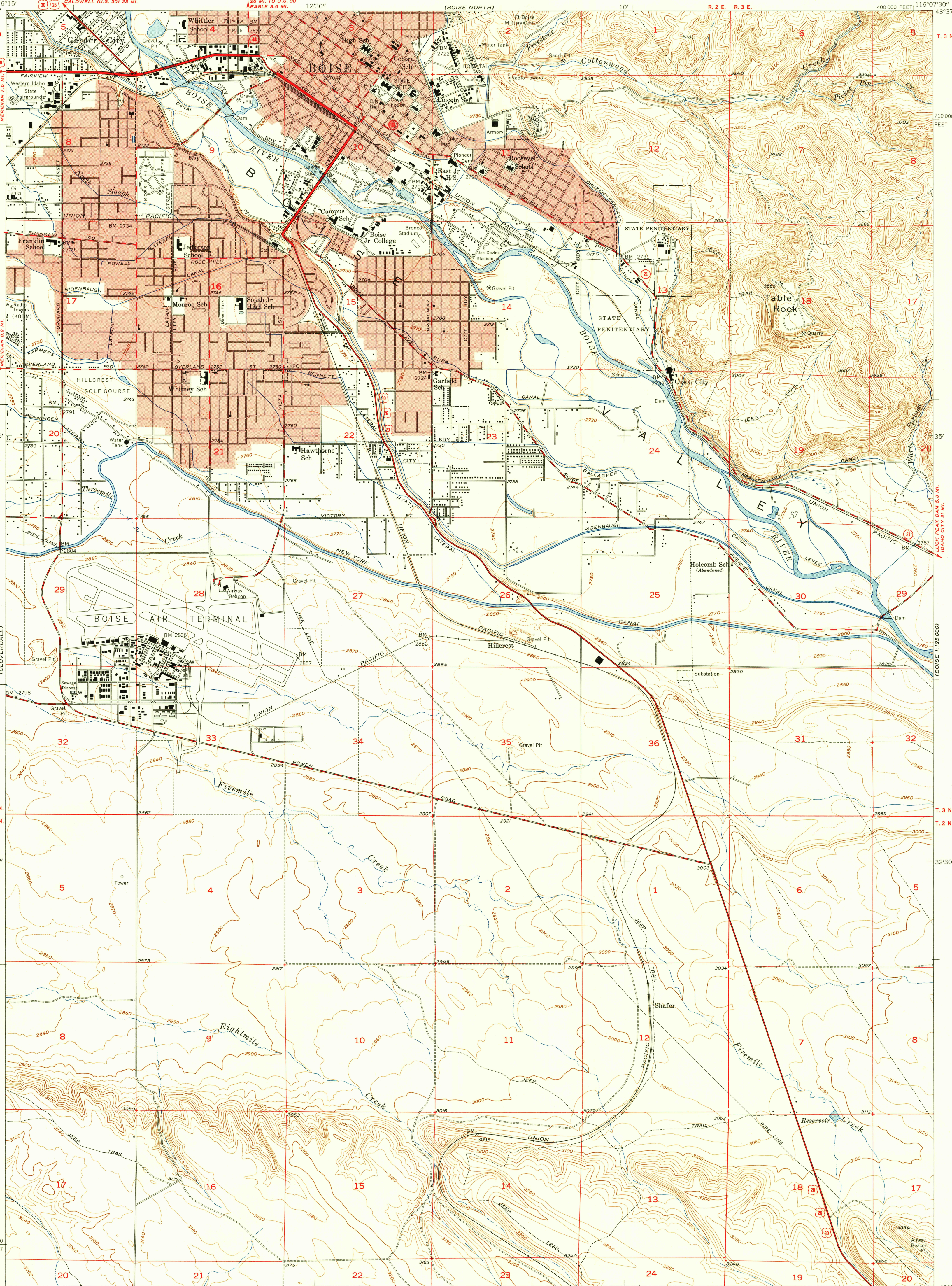


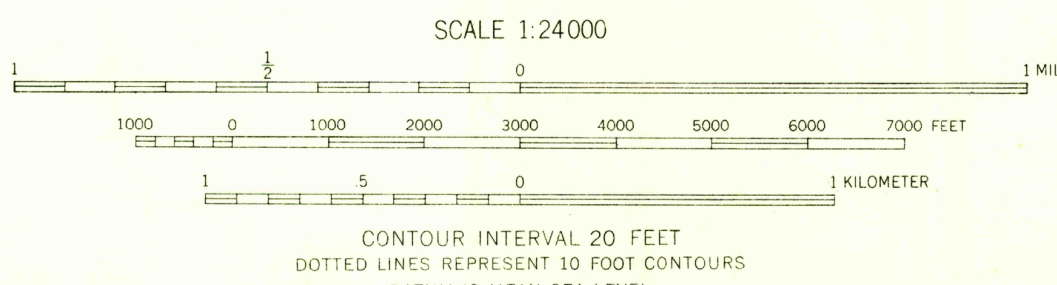
U.S.G.S.
FILE COPY
TOPOGRAPHIC DIVISION

U.S.G.S.
FILE COPY
TOPOGRAPHIC DIVISION



Map by U.S. Forest Service
Edited and published by the Geological Survey
Control by USGS, USC&GS, and State of Idaho
Topography from aerial photographs taken 1939
by KEK plotter. Field check by Geological Survey 1954
Polyconic projection. 1927 North American datum
10,000-foot grid based on Idaho coordinate system, west zone
Red tint indicates areas in which only landmark buildings are shown

TRUE NORTH
MAGNETIC NORTH
APPROXIMATE MEAN
DECLINATION, 1954



USGS
Historical File
Topographic Division

ROAD CLASSIFICATION

Heavy-duty ——— Light-duty ———
Medium-duty ——— Unimproved dirt ———
U.S. Route ——— State Route ———



BOISE SOUTH, IDAHO
N4330-W11607.5/7.5

1954

THIS MAP COMPLIES WITH NATIONAL MAP ACCURACY STANDARDS
FOR SALE BY U.S. GEOLOGICAL SURVEY, FEDERAL CENTER, DENVER, COLORADO OR WASHINGTON 25, D. C.
A FOLDER DESCRIBING TOPOGRAPHIC MAPS AND SYMBOLS IS AVAILABLE ON REQUEST

MAY 1 1956

3700