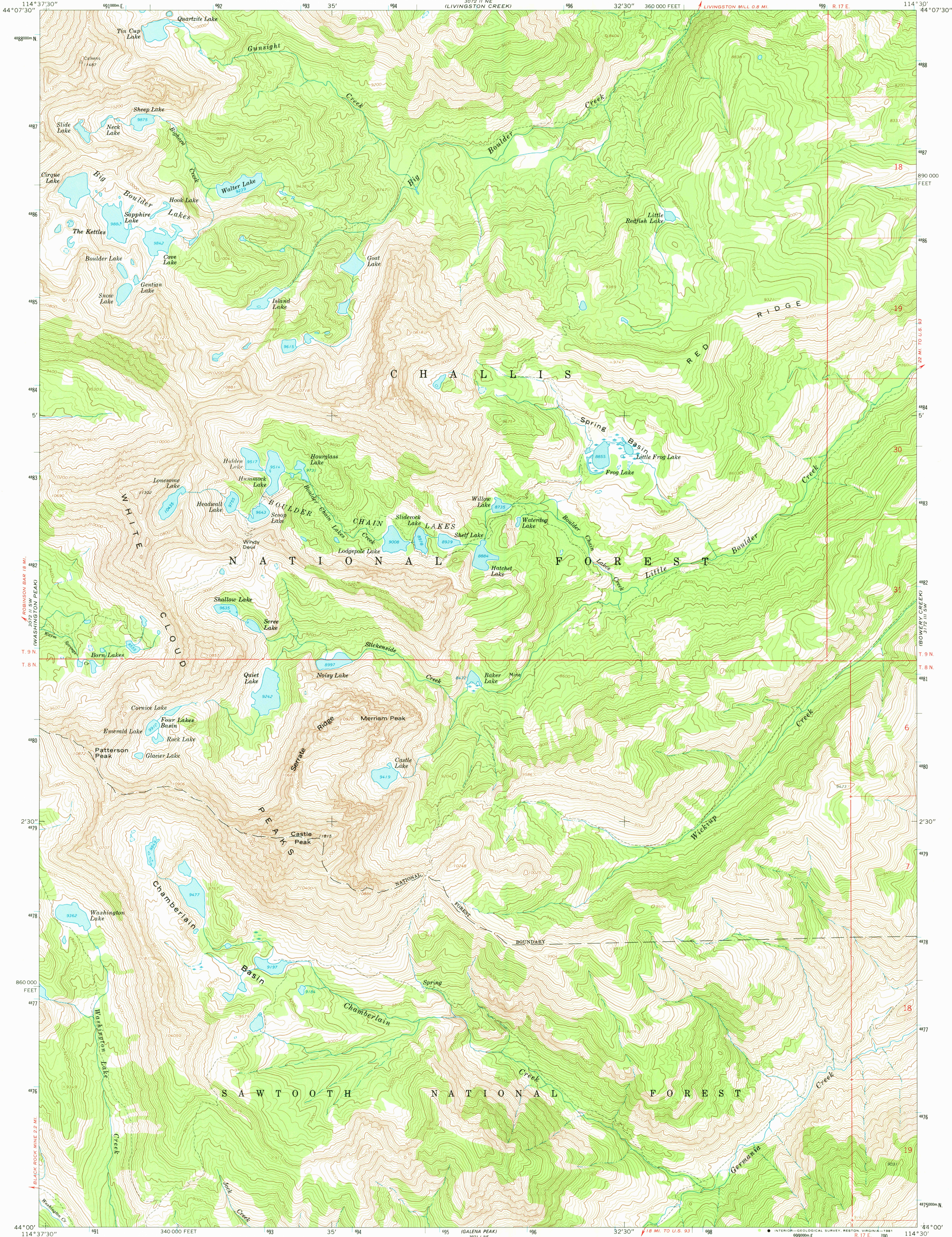
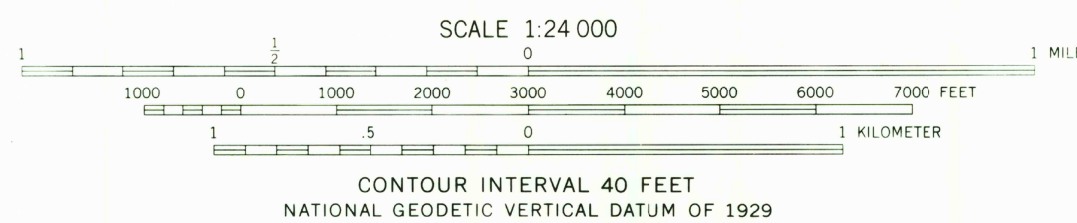
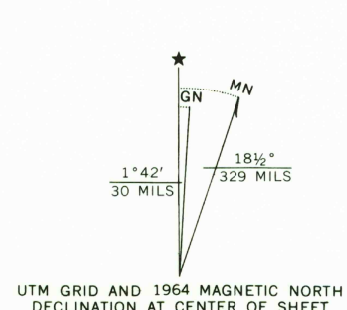


UNITED STATES
DEPARTMENT OF THE INTERIOR
GEOLOGICAL SURVEY

BOULDER CHAIN LAKES QUADRANGLE
IDAHO—CUSTER CO.
7.5 MINUTE SERIES (TOPOGRAPHIC)



Mapped, edited, and published by the Geological Survey
Control by USGS and USC&GS
Topography by photogrammetric methods from aerial
photographs taken 1957. Field checked 1964
Polyconic projection. 1927 North American datum
10,000-foot grid based on Idaho coordinate system,
central zone
1000-meter Universal Transverse Mercator grid ticks,
zone 11, shown in blue
To place on the predicted North American Datum 1983,
move the projection lines 14 meters north and
72 meters east as shown by dashed corner ticks
Where omitted, land lines have not been established
There may be private inholdings within the boundaries of
the National or State reservations shown on this map



BOULDER CHAIN LAKES, IDAHO
N4400—W11430/7.5

ROAD CLASSIFICATION
Trails

DMA 3072 II SE—SERIES V893

USGS
Historical File
National Mapping Div.

MAY 20 1981
3600