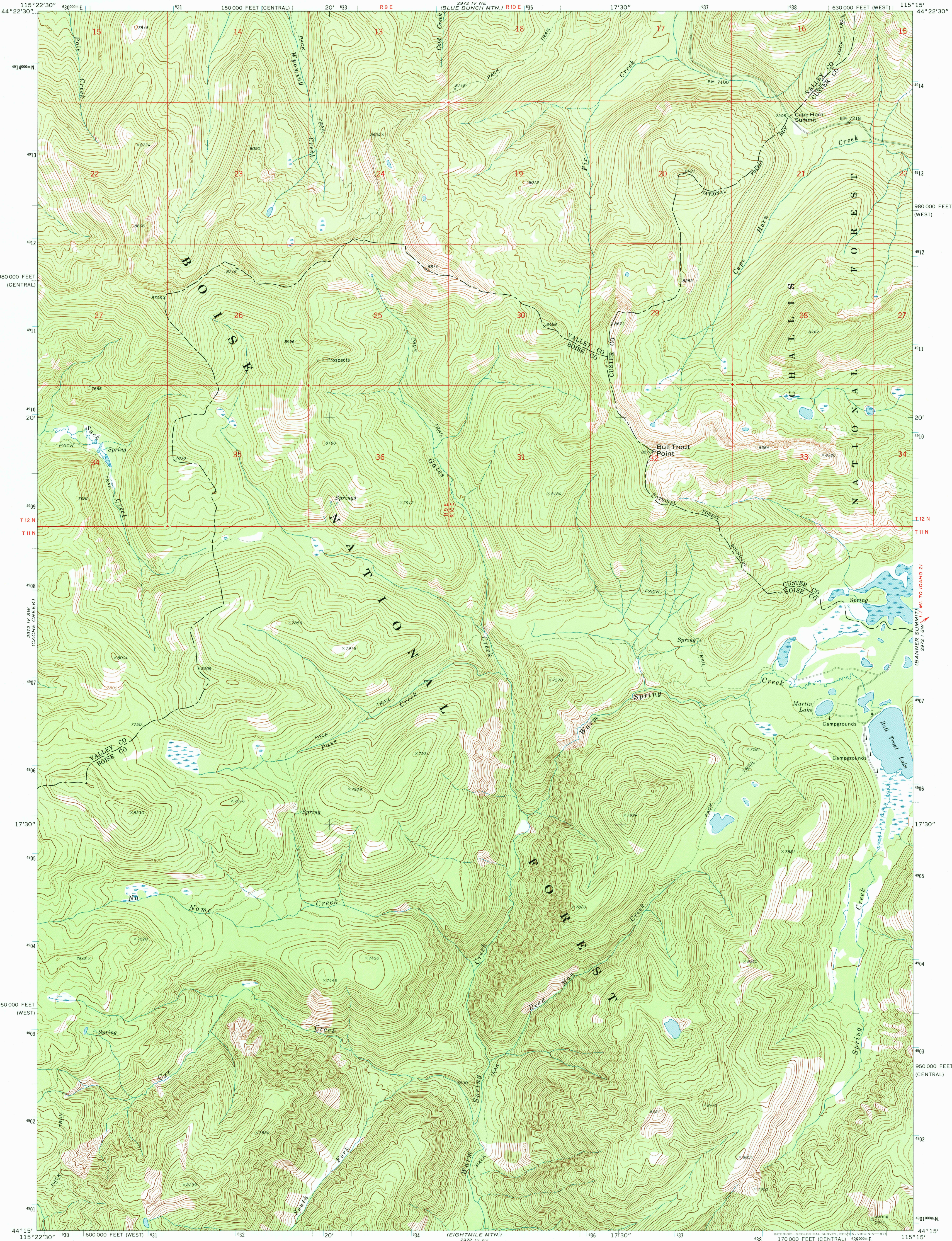




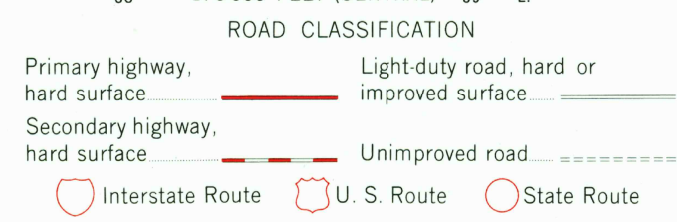
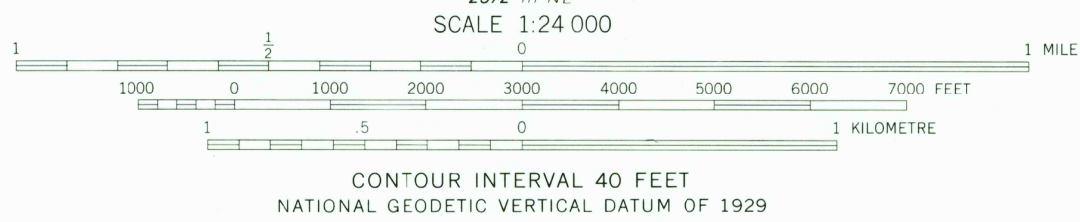
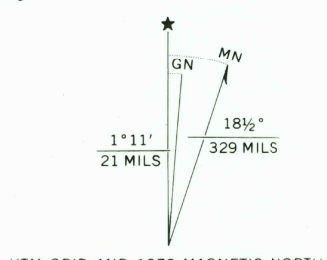
U.S. DEPARTMENT OF THE INTERIOR
U.S. GEOLOGICAL SURVEY

BULL TROUT POINT QUADRANGLE
IDAHO
7.5 MINUTE SERIES (TOPOGRAPHIC)



Mapped, edited, and published by the Geological Survey

Control by USGS and NOS/NOAA
Topography by photogrammetric methods from aerial
photographs taken 1971. Field checked 1972
Projection: Idaho coordinate system, west zone
(transverse Mercator)
10,000-foot grid ticks based on Idaho coordinate
system, west and central zones
1000-metre Universal Transverse Mercator grid ticks,
zone 11, shown in blue. 1927 North American datum
Where omitted, land lines have not been established



BULL TROUT POINT, IDAHO
N4415-W11515/7.5

1972

AMS 2972 IV SE-SERIES V893

THIS MAP COMPLIES WITH NATIONAL MAP ACCURACY STANDARDS
FOR SALE BY U.S. GEOLOGICAL SURVEY, P.O. BOX 25286, DENVER, COLORADO 80225
A FOLDER DESCRIBING TOPOGRAPHIC MAPS AND SYMBOLS IS AVAILABLE ON REQUEST



RECEIVED
MAY 31 2000
USGS NHD
HISTORICAL MAP ARCHIVES

