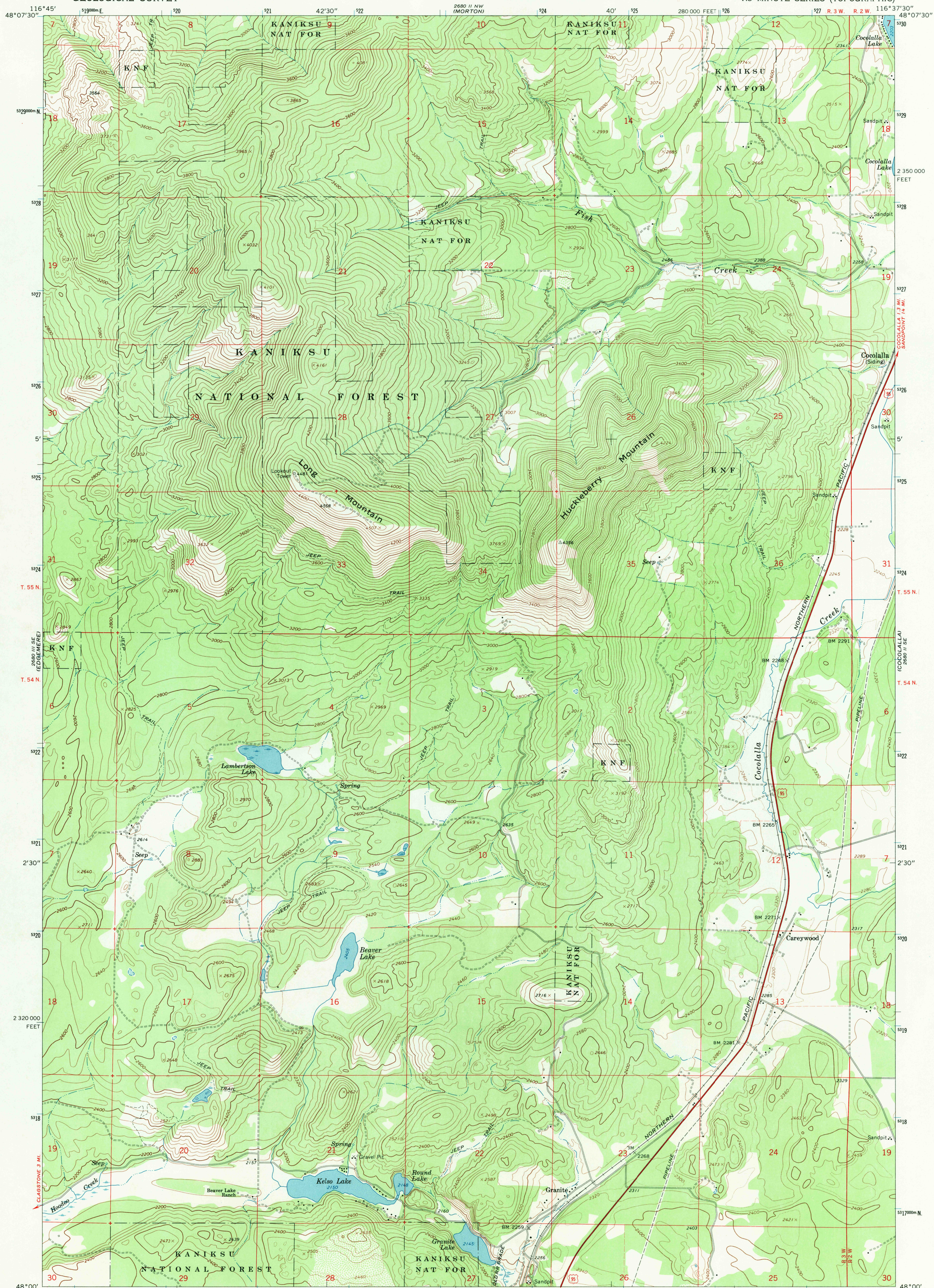


UNITED STATES
DEPARTMENT OF THE INTERIOR
GEOLOGICAL SURVEY

CAREYWOOD QUADRANGLE
IDAHO-BONNER CO.
7.5 MINUTE SERIES (TOPOGRAPHIC)



Mapped, edited, and published by the Geological Survey

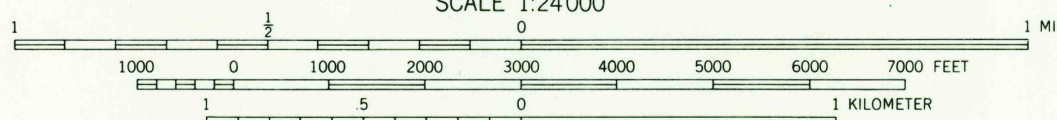
Control by USGS and USC&GS

Topography by photogrammetric methods from aerial photographs taken 1966. Field checked 1968

Polyconic projection. 1927 North American datum 10,000-foot grid based on Idaho coordinate system, west zone

1000-meter Universal Transverse Mercator grid ticks, zone 11, shown in blue

Fine red dashed lines indicate selected fence lines



CONTOUR INTERVAL 40 FEET
DOTTED LINES REPRESENT 20-FOOT CONTOURS
DATUM IS MEAN SEA LEVEL

ROAD CLASSIFICATION

Primary highway, all weather, Light-duty road, all weather,
hard surface, improved surface

Unimproved road, fair or dry

weather

U. S. Route

USGS
Historical File
Topographic Division

CAREYWOOD, IDAHO
N4800-W11637.5/7.5

1968

AMS 2680 II SW-SERIES V893

THIS MAP COMPLIES WITH NATIONAL MAP ACCURACY STANDARDS
FOR SALE BY U. S. GEOLOGICAL SURVEY, DENVER, COLORADO 80225, OR WASHINGTON, D. C. 20242
A FOLDER DESCRIBING TOPOGRAPHIC MAPS AND SYMBOLS IS AVAILABLE ON REQUEST

U.S.G.S.
FMS COPY
TOPOGRAPHIC DIVISION

JUN 21 1971