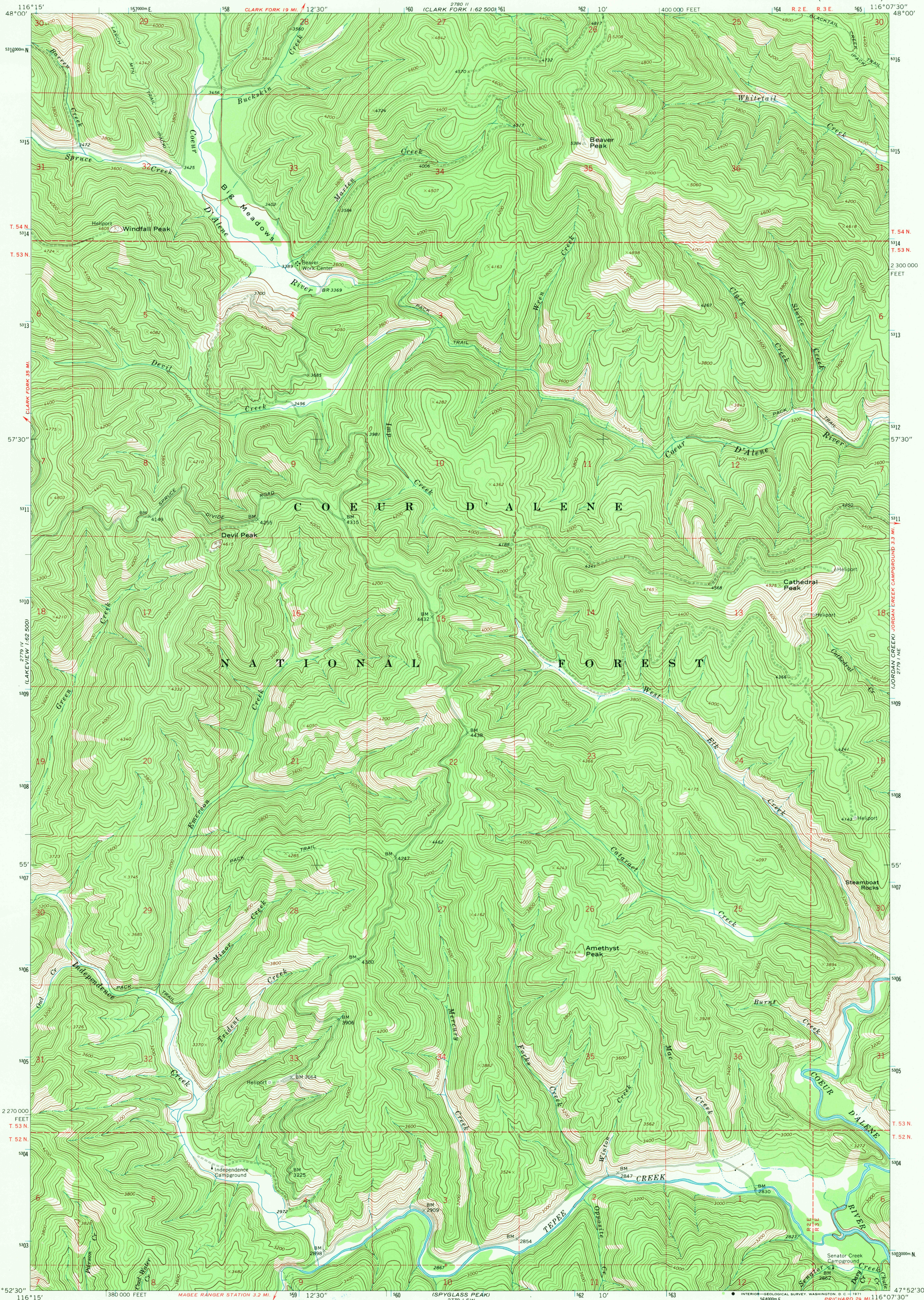


UNITED STATES
DEPARTMENT OF THE INTERIOR
GEOLOGICAL SURVEY

CATHEDRAL PEAK QUADRANGLE
IDAHO-SHOSHONE CO.
7.5 MINUTE SERIES (TOPOGRAPHIC)



Mapped, edited, and published by the Geological Survey

Control by USGS and USC&GS

Topography by photogrammetric methods from aerial photographs taken 1965. Field checked 1966

Polyconic projection. 1927 North American datum

10,000-foot grid based on Idaho coordinate system, west zone

1000-meter Universal Transverse Mercator grid ticks, zone 11, shown in blue

UTM GRID AND 1966 MAGNETIC NORTH DECLINATION AT CENTER OF SHEET

SCALE 1:24,000

CONTOUR INTERVAL 40 FEET
DATUM IS MEAN SEA LEVEL

USGS
Historical File
Topographic Division



QUADRANGLE LOCATION

ROAD CLASSIFICATION
Light duty Unimproved dirt
FILE COPY
TOPOGRAPHIC DIVISION

CATHEDRAL PEAK, IDAHO
N4752.5-W11607.5/7.5

1966

AMS 2779 I NW-SERIES V893

THIS MAP COMPLIES WITH NATIONAL MAP ACCURACY STANDARDS
FOR SALE BY U. S. GEOLOGICAL SURVEY, DENVER, COLORADO 80225, OR WASHINGTON, D. C. 20242
A FOLDER DESCRIBING TOPOGRAPHIC MAPS AND SYMBOLS IS AVAILABLE ON REQUEST

JUL 12 1971