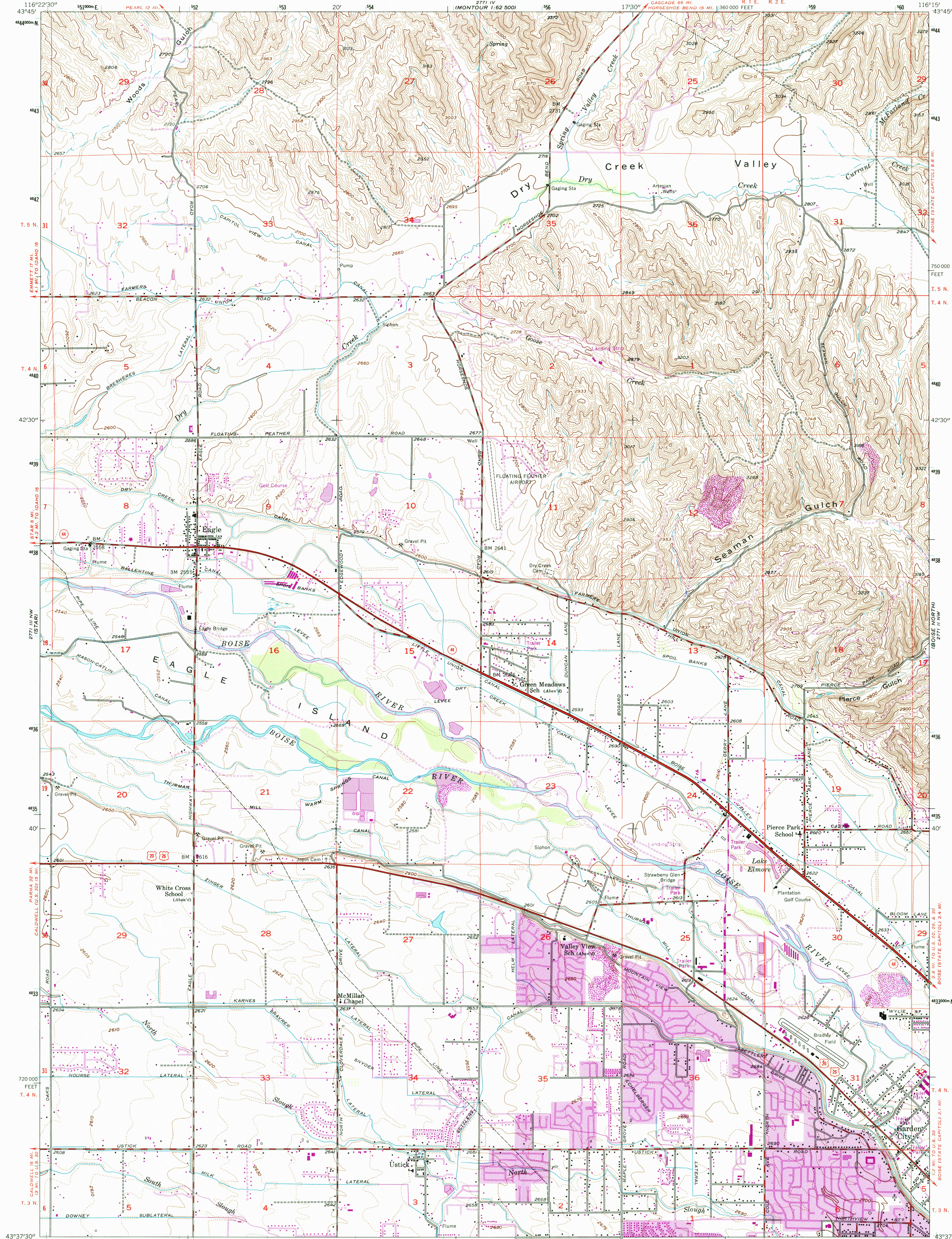


2771 IV
MONTOUR
1:62 500

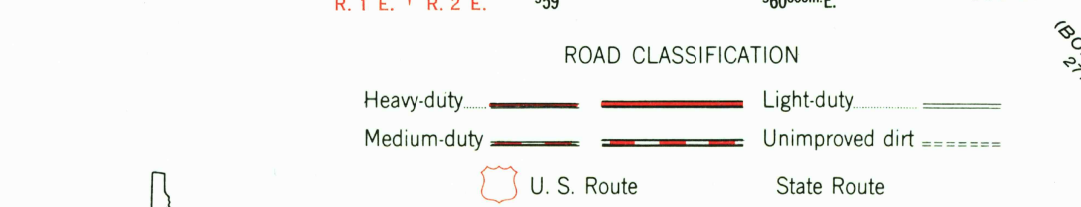
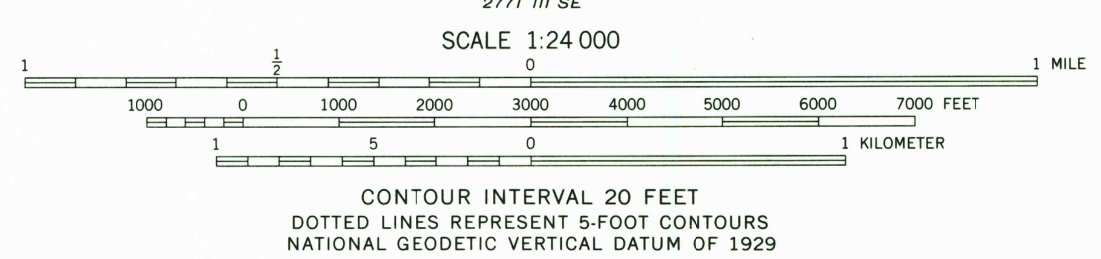
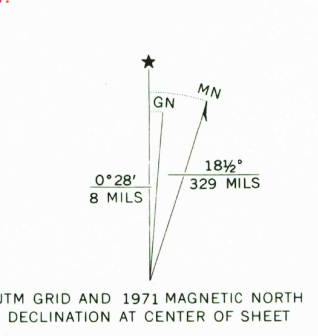
UNITED STATES
DEPARTMENT OF THE INTERIOR
GEOLOGICAL SURVEY

EAGLE QUADRANGLE
IDAHO-ADA CO.
7.5 MINUTE SERIES (TOPOGRAPHIC)

2771 I SW
CARTWRIGHT CANYON



Mapped, edited, and published by the Geological Survey
Control by USGS and USC&GS
Topography from aerial photographs by multiplex methods
and by plane-table surveys 1953. Aerial photographs taken 1951
Polyconic projection. 1927 North American datum
10,000-foot grid based on Idaho coordinate system,
west zone
1000-meter Universal Transverse Mercator grid ticks,
zone 11, shown in blue
To place on the predicted North American Datum 1983
move the projection lines 15 meters north and
77 meters east as shown by dashed corner ticks



THIS MAP COMPLIES WITH NATIONAL MAP ACCURACY STANDARDS
FOR SALE BY U.S. GEOLOGICAL SURVEY, P.O. BOX 25286, DENVER, COLORADO 80225
A FOLDER DESCRIBING TOPOGRAPHIC MAPS AND SYMBOLS IS AVAILABLE ON REQUEST

Revisions shown in purple compiled from aerial photographs
taken 1976 and other source data. This information not
field checked. Map edited 1979
Purple tint indicates extension of urban areas

EAGLE, IDAHO
43116-F3-TF-024

1953
PHOTOREVISED 1979
DMA 2771 III NE-SERIES V993

RECEIVED
MAY 3 1 1979
REC'D FILE COPY

ISBN 0-607-17177-4
9 780607 171778