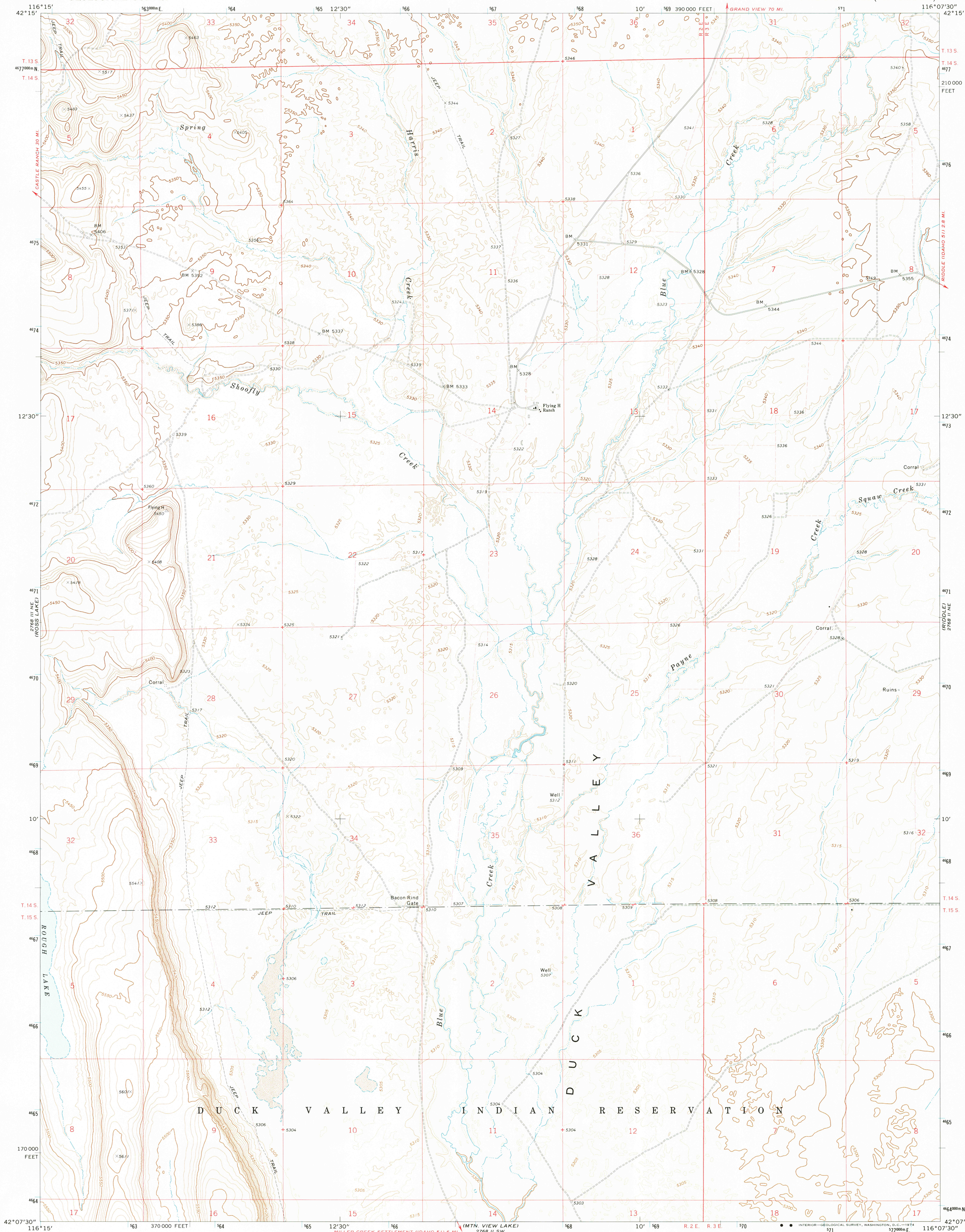


UNITED STATES  
DEPARTMENT OF THE INTERIOR  
GEOLOGICAL SURVEY

FLYING H RANCH QUADRANGLE  
IDAHO—OWYHEE CO.  
7.5 MINUTE SERIES (TOPOGRAPHIC)



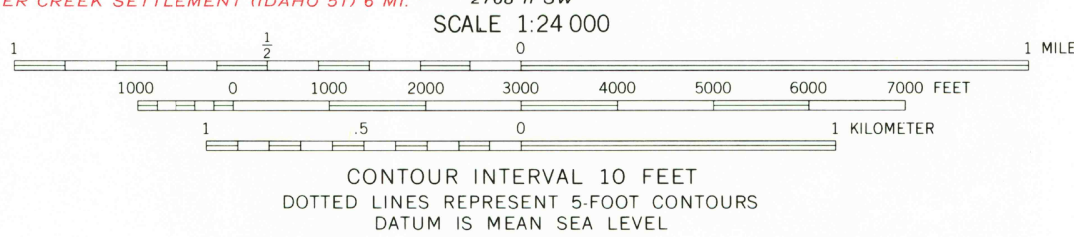
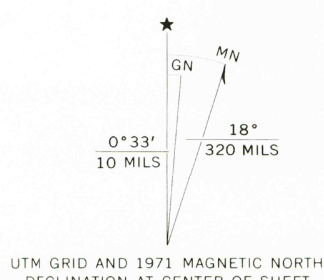
Mapped, edited, and published by the Geological Survey

Control by USGS and USC&GS

Topography by photogrammetric methods from aerial photographs taken 1969. Field checked 1971

Projection and 10,000-foot grid ticks: Idaho coordinate system, west zone (transverse Mercator)  
1000-meter Universal Transverse Mercator grid ticks, zone 11, shown in blue. 1927 North American datum

Fine red dashed lines indicate selected fence lines



ROAD CLASSIFICATION	
Primary highway, hard surface	Light duty road, hard or improved surface
Secondary highway, hard surface	Unimproved road
Interstate Route	U. S. Route
	State Route



THIS MAP COMPLIES WITH NATIONAL MAP ACCURACY STANDARDS  
FOR SALE BY U. S. GEOLOGICAL SURVEY, DENVER, COLORADO 80225, OR RESTON, VIRGINIA 22092  
A FOLDER DESCRIBING TOPOGRAPHIC MAPS AND SYMBOLS IS AVAILABLE ON REQUEST

FLYING H RANCH, IDAHO  
N4207.5—W11607.5/7.5

1971

AMS 2768 II NW—SERIES V893

USGS  
Historical File  
Topographic Division

AUG 13 1974

2690