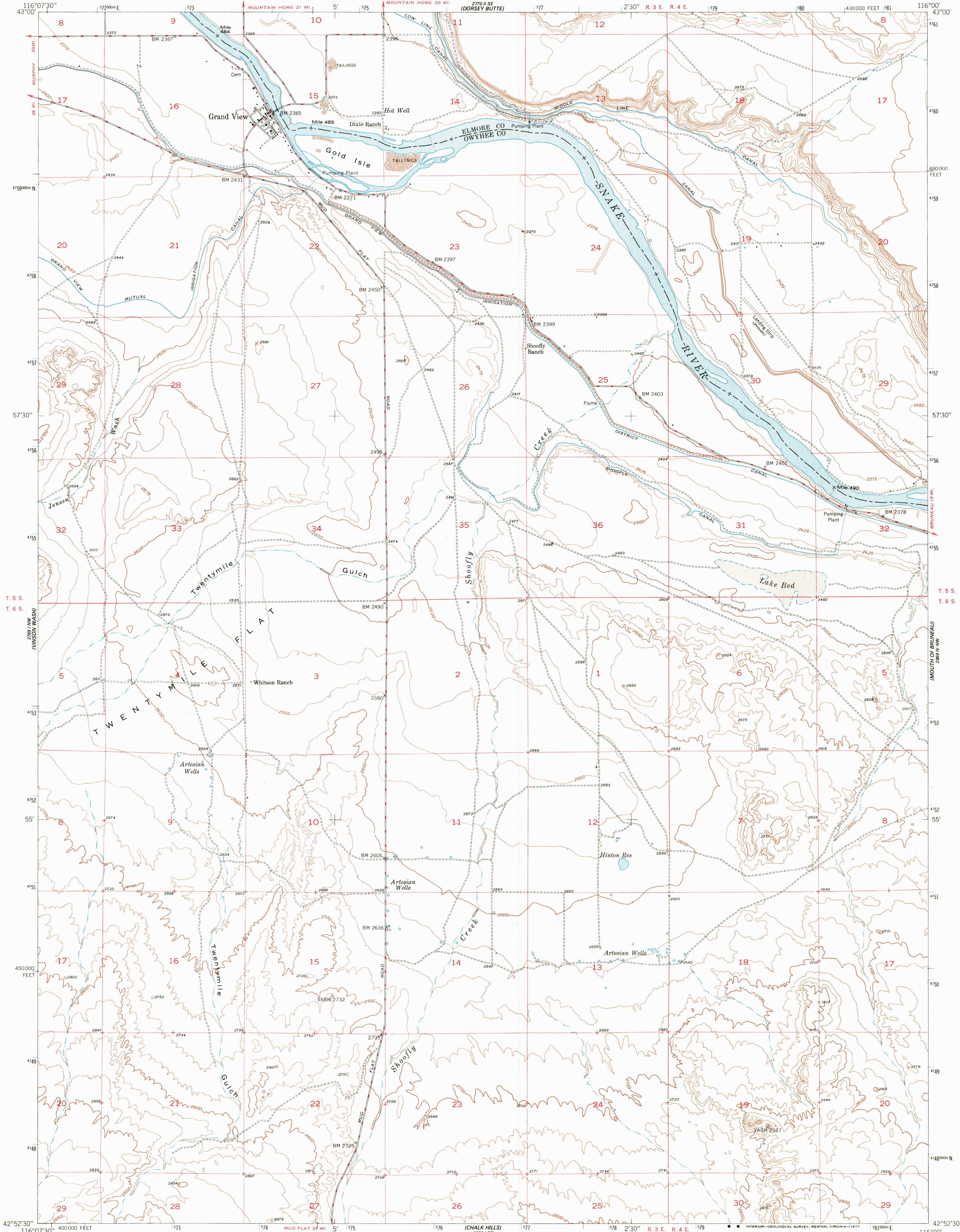
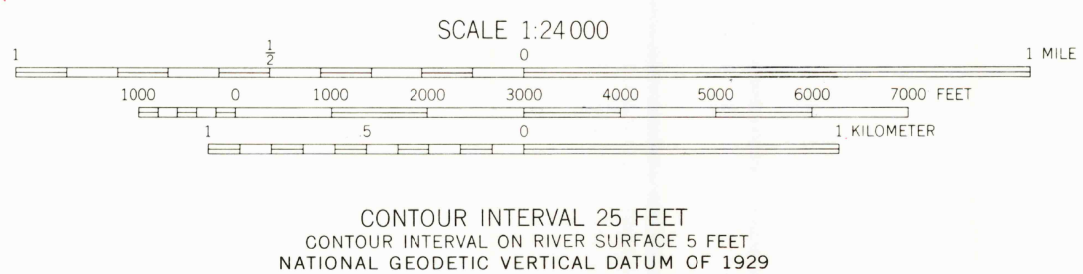
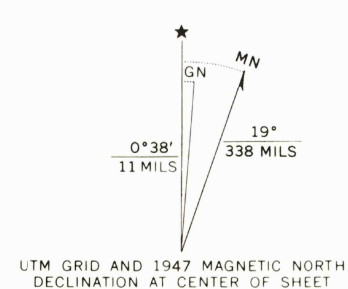


UNITED STATES
DEPARTMENT OF THE INTERIOR
GEOLOGICAL SURVEY

GRAND VIEW QUADRANGLE
IDAHO
7.5 MINUTE SERIES (TOPOGRAPHIC)



Mapped, edited, and published by the Geological Survey
Control by USGS and USC & GS
Culture and drainage in part compiled from
aerial photographs taken 1946
Topography by plane-table methods 1946-1947
Polyconic projection. 1927 North American datum
10000 foot grid based on Idaho coordinate system,
West zone
1000-meter Universal Transverse Mercator grid ticks,
zone 11, shown in blue



ROAD CLASSIFICATION
HARD SURFACE ALL WEATHER ROADS DRY WEATHER ROADS
Heavy-duty 4 LANE 6 LANE Improved dirt
Medium-duty 4 LANE 6 LANE Unimproved dirt
Loose-surface or narrow hard-surface
U. S. Route State Route

GRAND VIEW, IDAHO
N4252.5--W11600/7.5

JUL 18 1977

THIS MAP COMPLIES WITH NATIONAL MAP ACCURACY STANDARDS
FOR SALE BY U. S. GEOLOGICAL SURVEY, DENVER, COLORADO 80225, OR RESTON, VIRGINIA 22092
A FOLDER DESCRIBING TOPOGRAPHIC MAPS AND SYMBOLS IS AVAILABLE ON REQUEST

USGS
Historical File
Topographic Division

1947
AMS 2769 I NE--SERIES V893