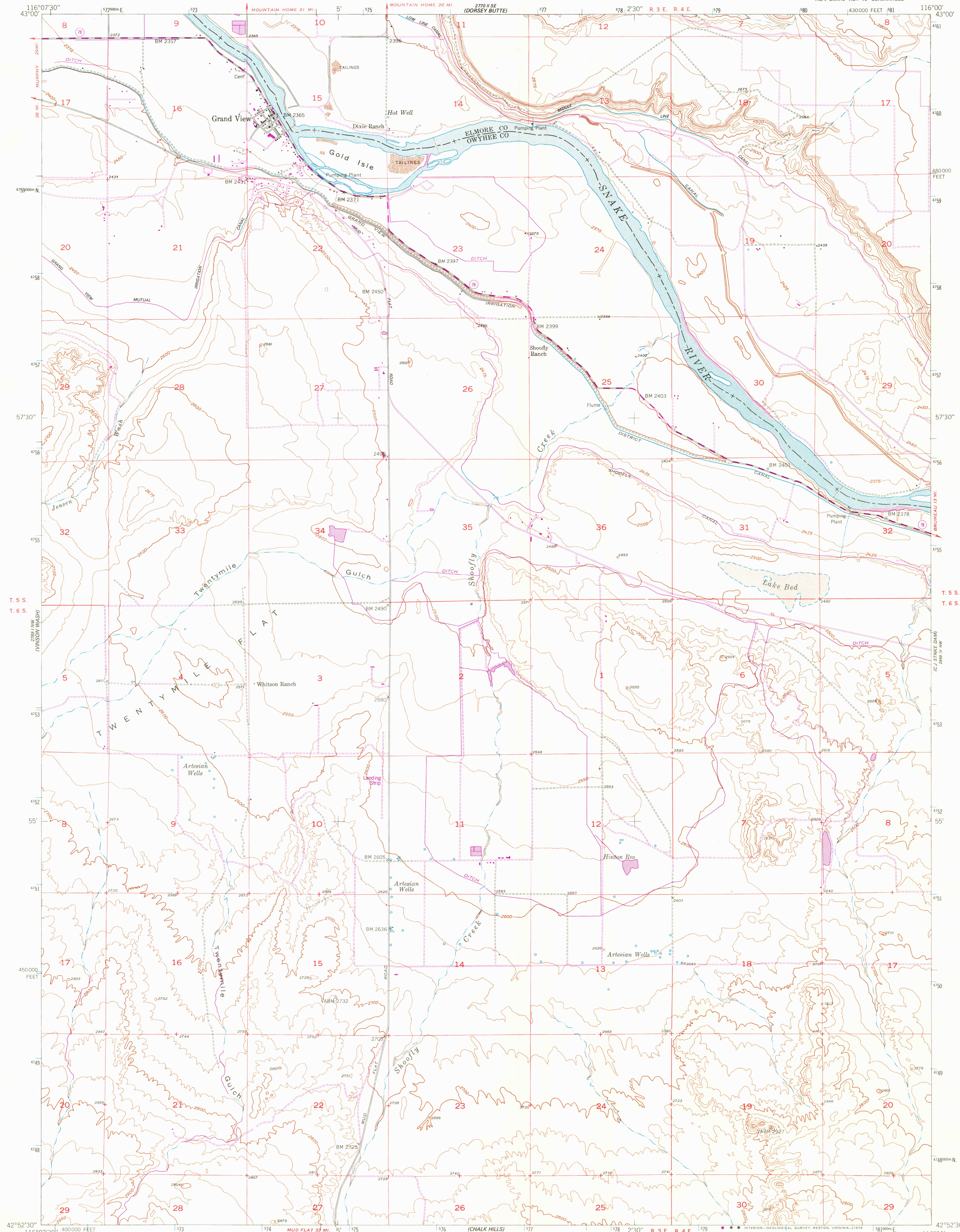


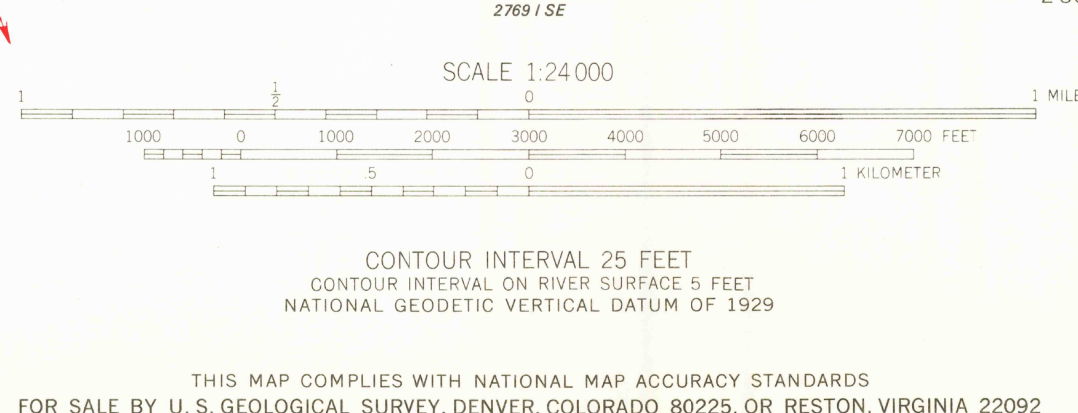
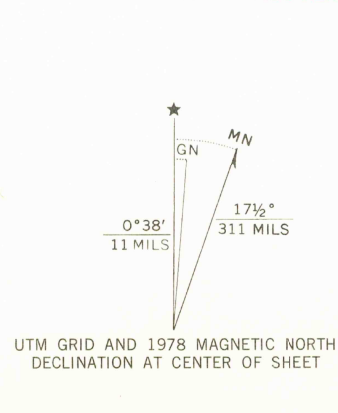
UNITED STATES  
DEPARTMENT OF THE INTERIOR  
GEOLOGICAL SURVEY

GRAND VIEW QUADRANGLE  
IDAHO  
7.5 MINUTE SERIES (TOPOGRAPHIC)  
NE 1/4 GRAND VIEW 15' QUADRANGLE

2890' SW  
(CARTER RINGS SW)



Mapped, edited, and published by the Geological Survey  
Control by USGS and USC & GS  
Culture and drainage in part compiled from  
aerial photographs taken 1946  
Topography by plane-table methods 1946-1947  
Polyconic projection. 1927 North American datum  
10,000 foot grid based on Idaho coordinate system,  
West zone  
1000-meter Universal Transverse Mercator grid ticks,  
zone 11, shown in blue  
Revisions shown in purple compiled from aerial photographs  
taken 1976 and other source data. This information not  
field checked. Map edited 1978



ROAD CLASSIFICATION

Primary highway, all weather, hard surface	Light-duty road, all weather, improved surface
Secondary highway, all weather, hard surface	Unimproved road, fair or dry weather

Legend: Interstate Route (thick red line), U. S. Route (red line), State Route (blue line)

USGS  
Historical File  
Topographic Division

GRAND VIEW, IDAHO  
NE 1/4 GRAND VIEW 15' QUADRANGLE  
N4252.5-W11600/7.5

1947  
PHOTOREVISED 1978  
AMS 2769 1 NE-SERIES V893

APR 26 1979