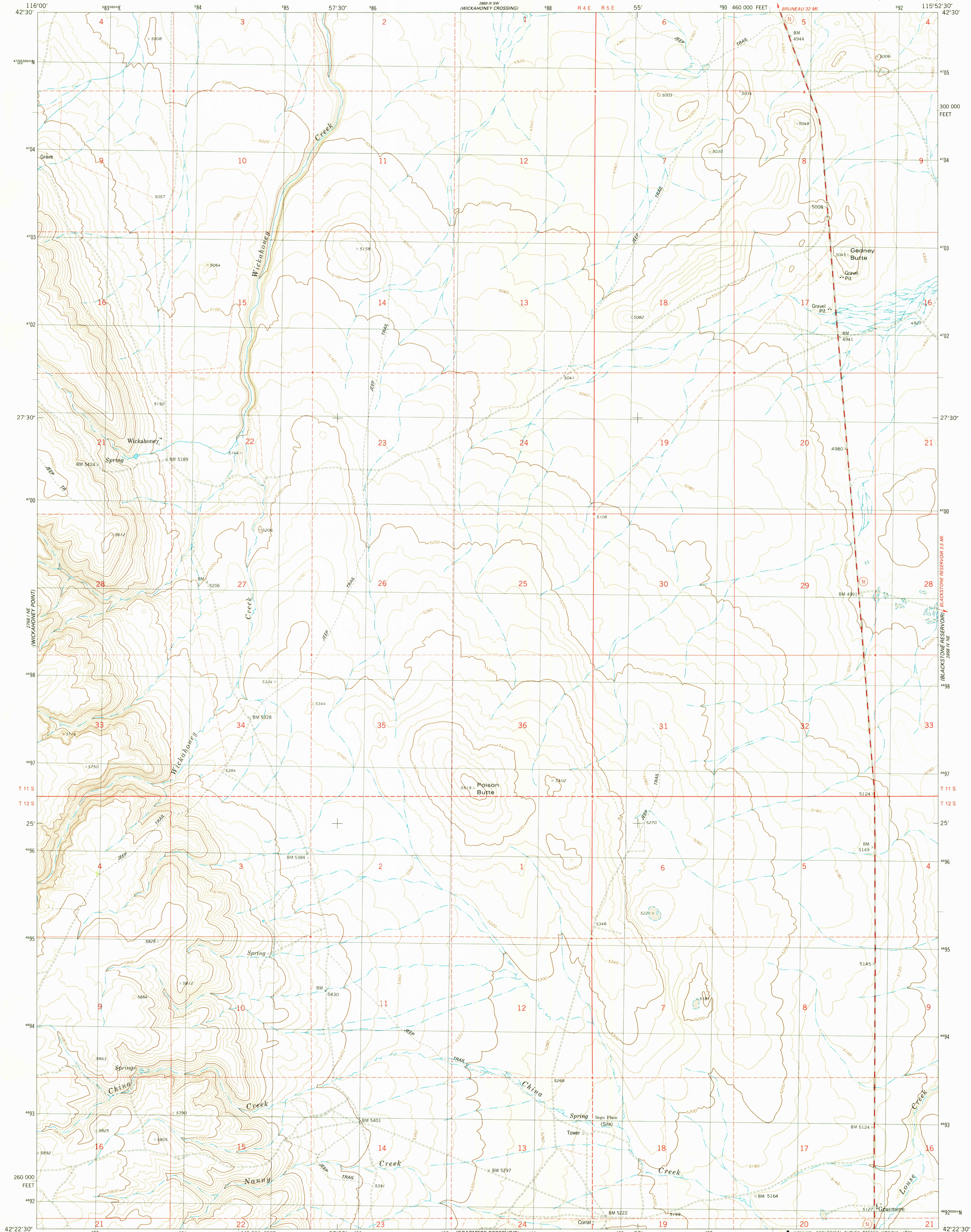
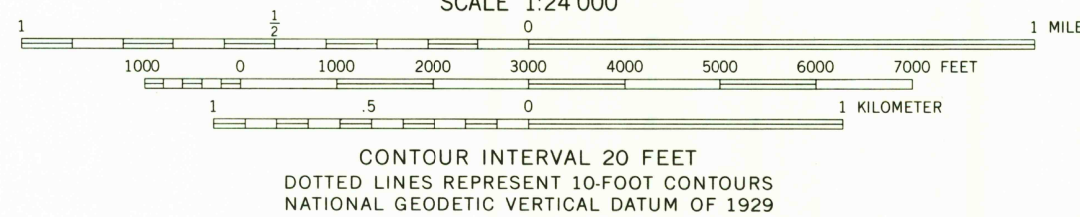
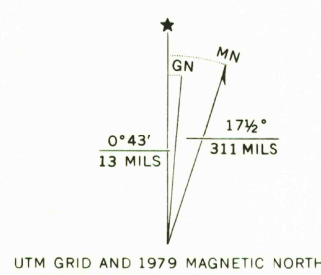


UNITED STATES
DEPARTMENT OF THE INTERIOR
GEOLOGICAL SURVEY

GRASMERE QUADRANGLE
IDAHO-OWYHEE CO.
7.5 MINUTE SERIES (TOPOGRAPHIC)



Mapped, edited, and published by the Geological Survey
Control by USGS and NOS/NOAA
Topography by photogrammetric methods from aerial
photographs taken 1973. Field checked 1975. Map edited 1979
Projection and 10,000-foot grid ticks: Idaho coordinate
system, west zone (transverse Mercator)
1000-meter Universal Transverse Mercator grid, zone 11
1927 North American datum
To place on the predicted North American Datum 1983
move the projection lines 15 meters north and
76 meters east as shown by dashed corner ticks
Fine red dashed lines indicate selected fence and field lines
where generally visible on aerial photographs
This information is unchecked



ROAD CLASSIFICATION
Primary highway, hard surface
Secondary highway, hard surface
Light-duty road, hard or improved surface
Unimproved road
Interstate Route
U. S. Route
State Route

THIS MAP COMPLIES WITH NATIONAL MAP ACCURACY STANDARDS
FOR SALE BY U. S. GEOLOGICAL SURVEY, DENVER, COLORADO 80225, OR RESTON, VIRGINIA 22092
A FOLDER DESCRIBING TOPOGRAPHIC MAPS AND SYMBOLS IS AVAILABLE ON REQUEST

GRASMER, IDAHO
42115-D8-TF-024

1979

DMA 2868 IV NW—SERIES V893

