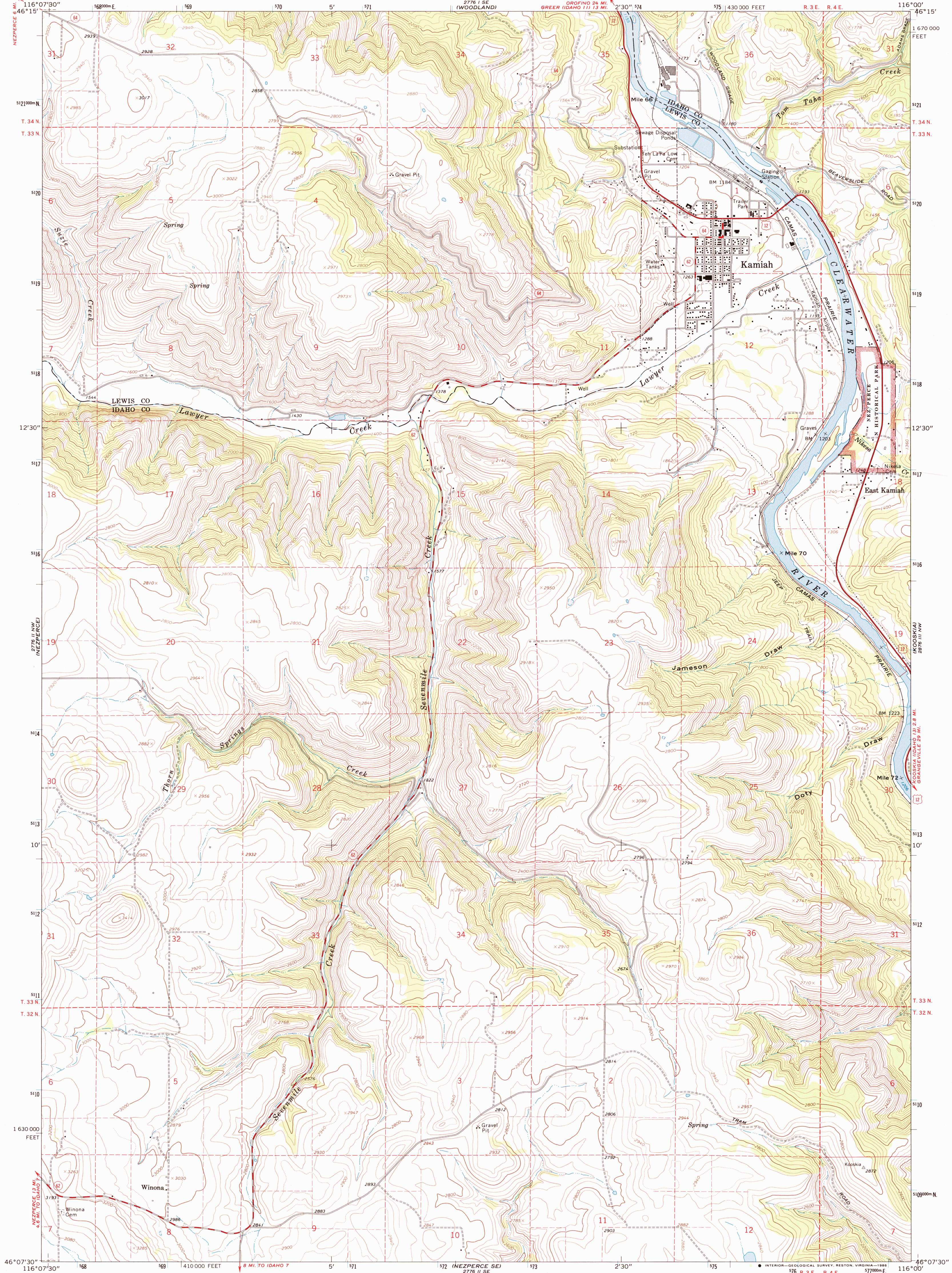
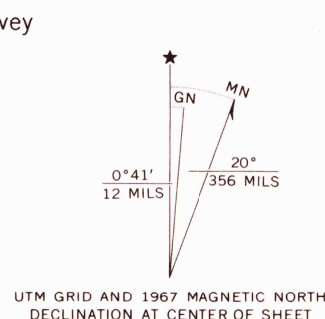


UNITED STATES  
DEPARTMENT OF THE INTERIOR  
GEOLOGICAL SURVEY

KAMIAH QUADRANGLE  
IDAHO  
7.5 MINUTE SERIES (TOPOGRAPHIC)



Mapped, edited, and published by the Geological Survey  
Control by USGS and USC&GS  
Topography by photogrammetric methods from aerial  
photographs taken 1966. Field checked 1967  
Polyconic projection. 1927 North American datum  
10,000-foot grid based on Idaho coordinate system,  
west zone  
1000-meter Universal Transverse Mercator grid ticks,  
zone 11, shown in blue  
To place on the predicted North American Datum 1983  
move the projection lines 15 meters north and  
76 meters east as shown by dashed corner ticks  
Fine red dashed lines indicate selected fence lines  
Entire area lies within the boundary  
of the Nez Perce Indian Reservation



SCALE 1:24,000  
CONTOUR INTERVAL 40 FEET  
DOTTED LINES REPRESENT 20-FOOT CONTOURS  
NATIONAL GEODETIC VERTICAL DATUM OF 1929

THIS MAP COMPLIES WITH NATIONAL MAP ACCURACY STANDARDS  
FOR SALE BY U. S. GEOLOGICAL SURVEY, DENVER, COLORADO 80225, OR RESTON, VIRGINIA 22092  
A FOLDER DESCRIBING TOPOGRAPHIC MAPS AND SYMBOLS IS AVAILABLE ON REQUEST

RETURN TO:  
U.S. GEOLOGICAL SURVEY  
WASHINGTON, D.C. 20506



ROAD CLASSIFICATION  
Heavy-duty ——— Light-duty ———  
Medium-duty ——— Unimproved dirt ———  
U.S. Route ——— State Route ———

KAMIAH, IDAHO  
46116-A2-TF-024

1967  
PHOTOINSPECTED 1979  
DMA 2776 II NE—SERIES V893

Map photoinspected 1979  
No major culture or drainage changes observed

KAMIAH  
ID 024  
ISSN # 0607174226  
TF  
9 780607 174226