

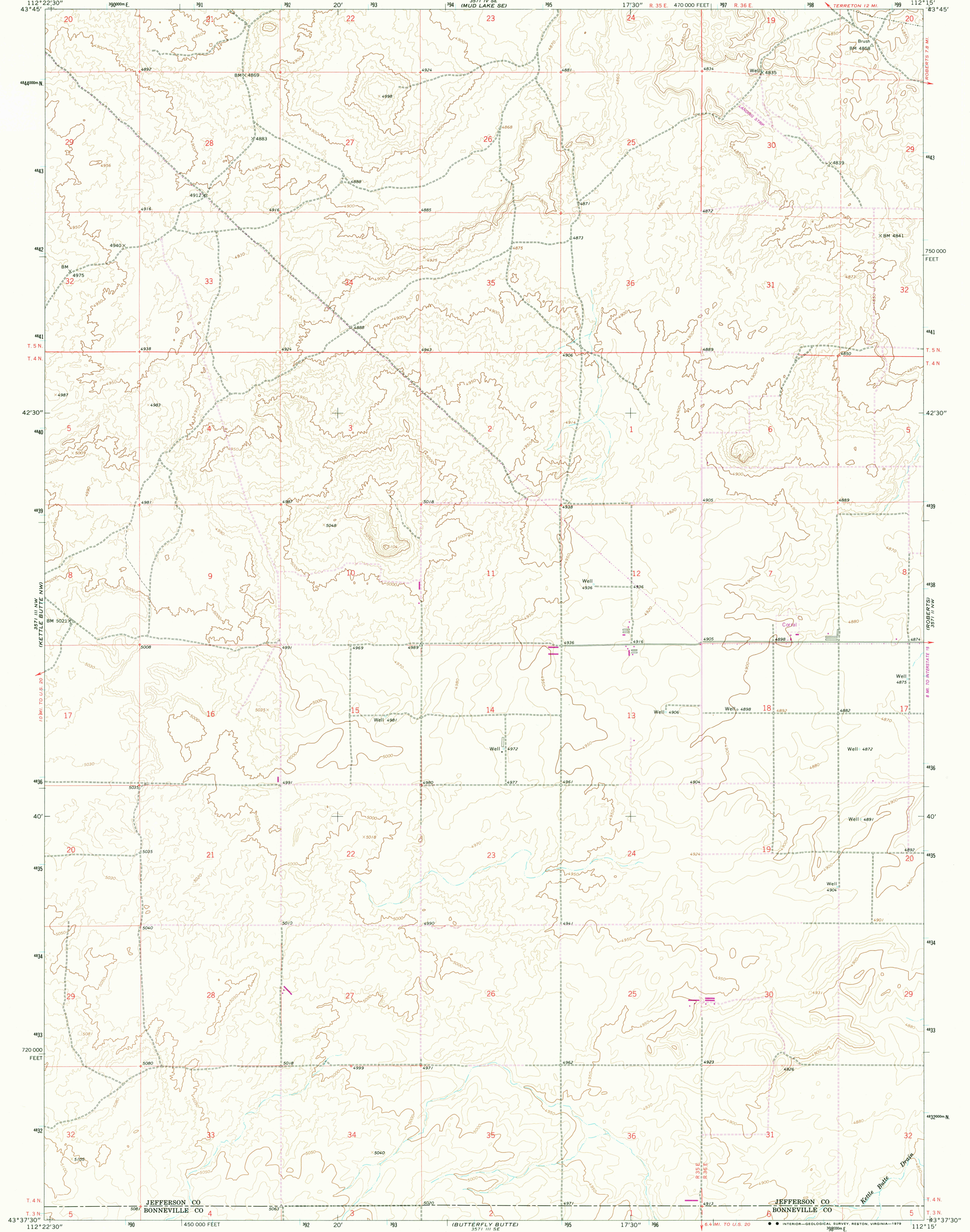
3571 NW
3571 NE
3571 SW
3571 SE
(MUD LAKE SE)

UNITED STATES
DEPARTMENT OF THE INTERIOR
GEOLOGICAL SURVEY

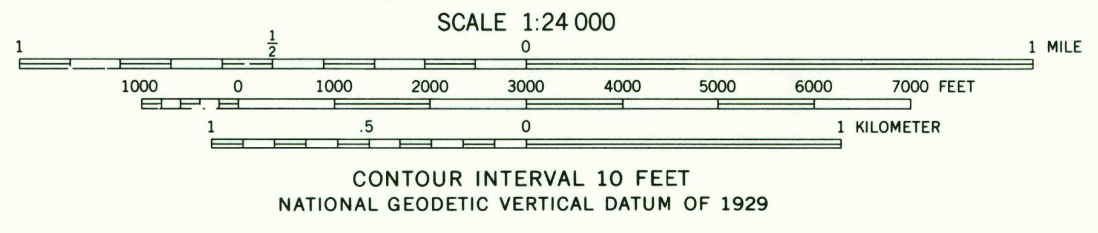
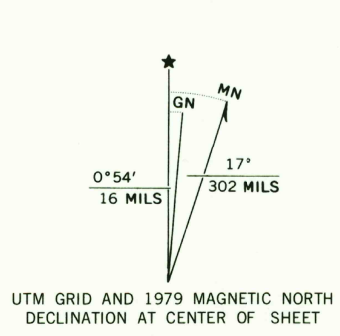


KETTLE BUTTE NE QUADRANGLE
IDAHO
7.5 MINUTE SERIES (TOPOGRAPHIC)

3571 NW
3571 NE
3571 SW
3571 SE
(MUD LAKE SE)



Mapped, edited, and published by the Geological Survey
Control by USGS and NOS/NOAA
Topography by photogrammetric methods from aerial
photographs taken 1959. Field checked 1964
Polyconic projection. 1927 North American datum
10,000-foot grid based on Idaho coordinate system,
east zone
1000-meter Universal Transverse Mercator grid ticks,
zone 12, shown in blue
To place on the predicted North American Datum 1983,
move the projection lines 12 meters north and
66 meters east as shown by dashed corner ticks
Finer dashed lines indicate selected fence lines



THIS MAP COMPLIES WITH NATIONAL MAP ACCURACY STANDARDS
FOR SALE BY U. S. GEOLOGICAL SURVEY, DENVER, COLORADO 80225, OR RESTON, VIRGINIA 22092
A FOLDER DESCRIBING TOPOGRAPHIC MAPS AND SYMBOLS IS AVAILABLE ON REQUEST



ROAD CLASSIFICATION
Light-duty ————— Unimproved dirt - - - - -
USGS
Historical File
Topographic Division
KETTLE BUTTE NE, IDAHO
N4337.5—W11215/7.5

1964
PHOTO REVISÉ 1979
DMA 5371 III NE—SERIES V893

APR - 7 1980
1700