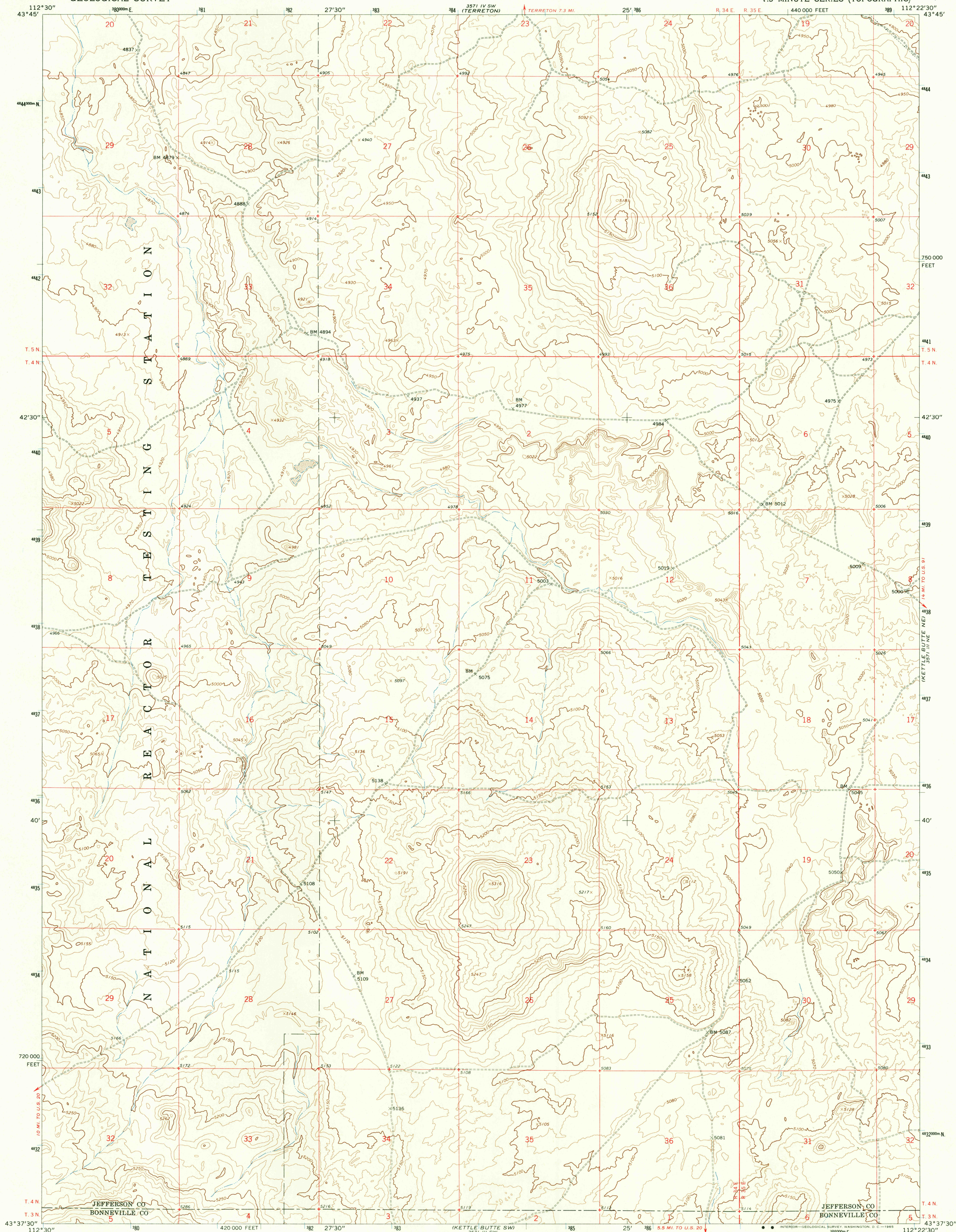


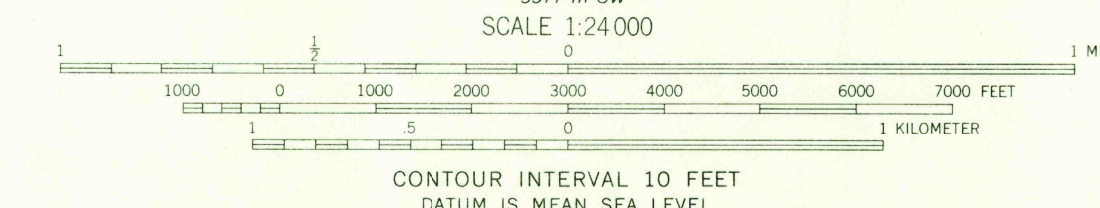
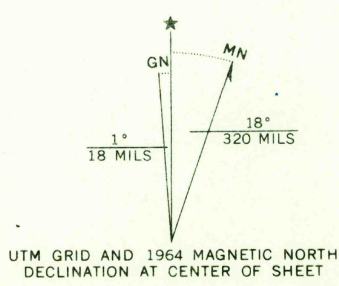
UNITED STATES
DEPARTMENT OF THE INTERIOR
GEOLOGICAL SURVEY

KETTLE BUTTE NW QUADRANGLE
IDAHO
7.5 MINUTE SERIES (TOPOGRAPHIC)

3571 IV SW
MUD LAKE SW



Mapped, edited, and published by the Geological Survey
Control by USGS and USC&GS
Topography by photogrammetric methods from aerial
photographs taken 1959. Field checked 1964
Polyconic projection. 1927 North American datum
10,000-foot grid based on Idaho coordinate system,
east zone
1000-meter Universal Transverse Mercator grid ticks,
zone 12, shown in blue



USCS
Historical File
Topographic Division

ROAD CLASSIFICATION
Unimproved dirt =====



KETTLE BUTTE NW, IDAHO
N4337.5-W11222.5/7.5

AUG 6 1965

1964
AMS 3571 III NW-SERIES V893

THIS MAP COMPLIES WITH NATIONAL MAP ACCURACY STANDARDS
FOR SALE BY U. S. GEOLOGICAL SURVEY, DENVER, COLORADO 80225, OR WASHINGTON, D. C. 20242
A FOLDER DESCRIBING TOPOGRAPHIC MAPS AND SYMBOLS IS AVAILABLE ON REQUEST