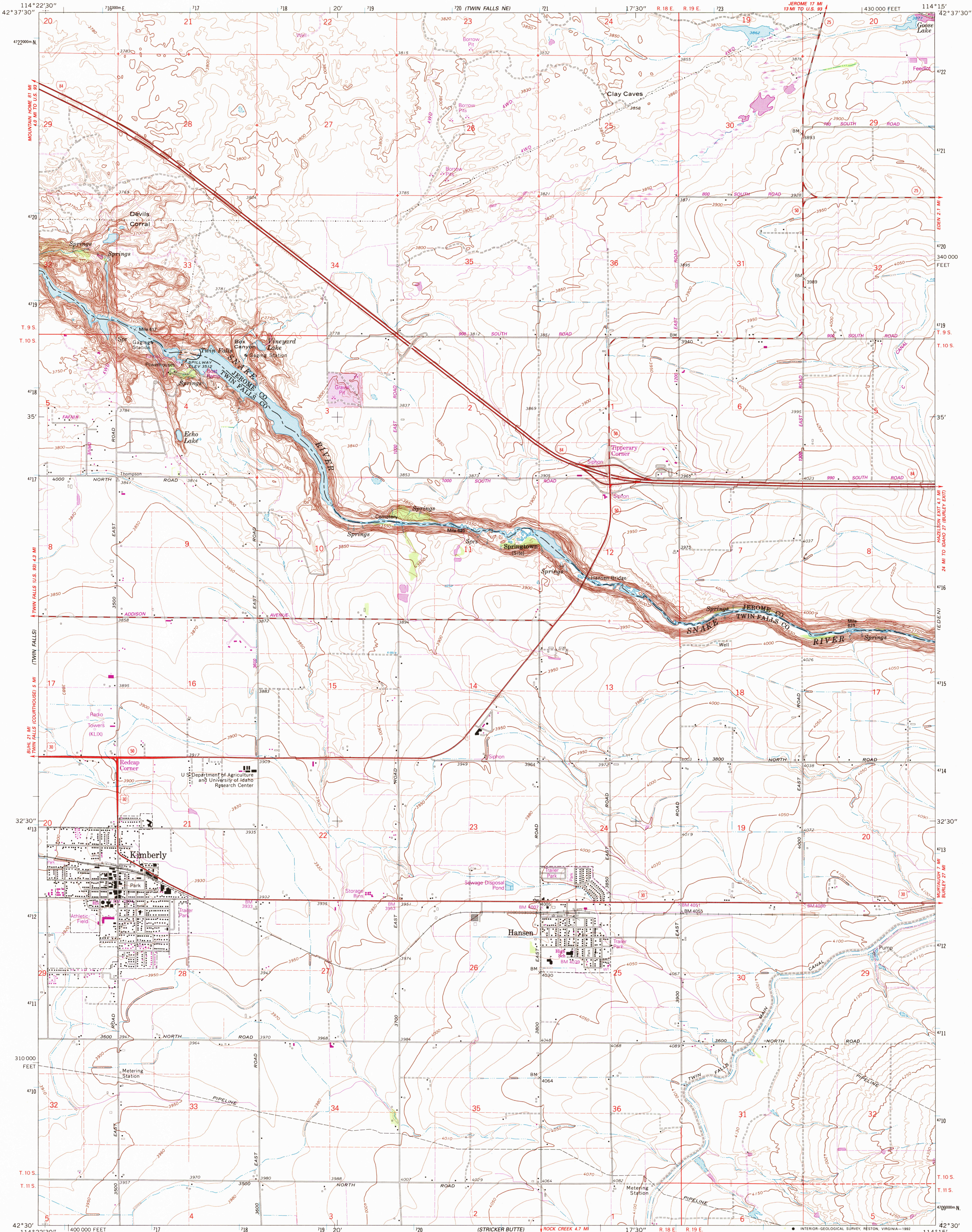


UNITED STATES
DEPARTMENT OF THE INTERIOR
GEOLOGICAL SURVEY

KIMBERLY QUADRANGLE

IDAHO

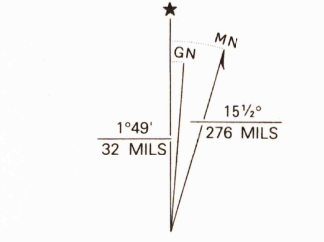
7.5 MINUTE SERIES (TOPOGRAPHIC)



Produced by the United States Geological Survey
Control by USGS and NOS/NOAA

Compiled from aerial photographs taken 1962. Information shown
in purple has been updated from aerial photographs taken 1987-1988
and field checked. Map edited 1992. Conflicts may exist between
some updated features and previously mapped contours.

North American Datum of 1927 (NAD 27). Projection and
10,000-foot grid ticks: Idaho Coordinate System, central zone
(Transverse Mercator). 1000-meter Universal Transverse
Mercator grid ticks, zone 11, shown in blue.
The difference between NAD 27 and North American Datum of
1983 (NAD 83) for 7.5 minute intersections is given in USGS
Bulletin 1875. The NAD 83 is shown by dashed corner ticks.



SCALE 1:24 000
CONTOUR INTERVAL 10 FEET
NATIONAL GEODETIC VERTICAL DATUM OF 1929

THIS MAP COMPLIES WITH NATIONAL MAP ACCURACY STANDARDS
FOR SALE BY U.S. GEOLOGICAL SURVEY
DENVER, COLORADO 80225, OR RESTON, VIRGINIA 22092
A FOLDER DESCRIBING TOPOGRAPHIC MAPS AND SYMBOLS IS AVAILABLE ON REQUEST

ROAD CLASSIFICATION
Primary highway, hard surface
Secondary highway, hard surface
Unimproved road
Light-duty road, hard or improved surface
Unimproved road
Interstate Route
U. S. Route
State Route



KIMBERLY, IDAHO
42114-E3-TF-024

1964
REVISED 1992
DMA 3169 III SE-SERIES V893