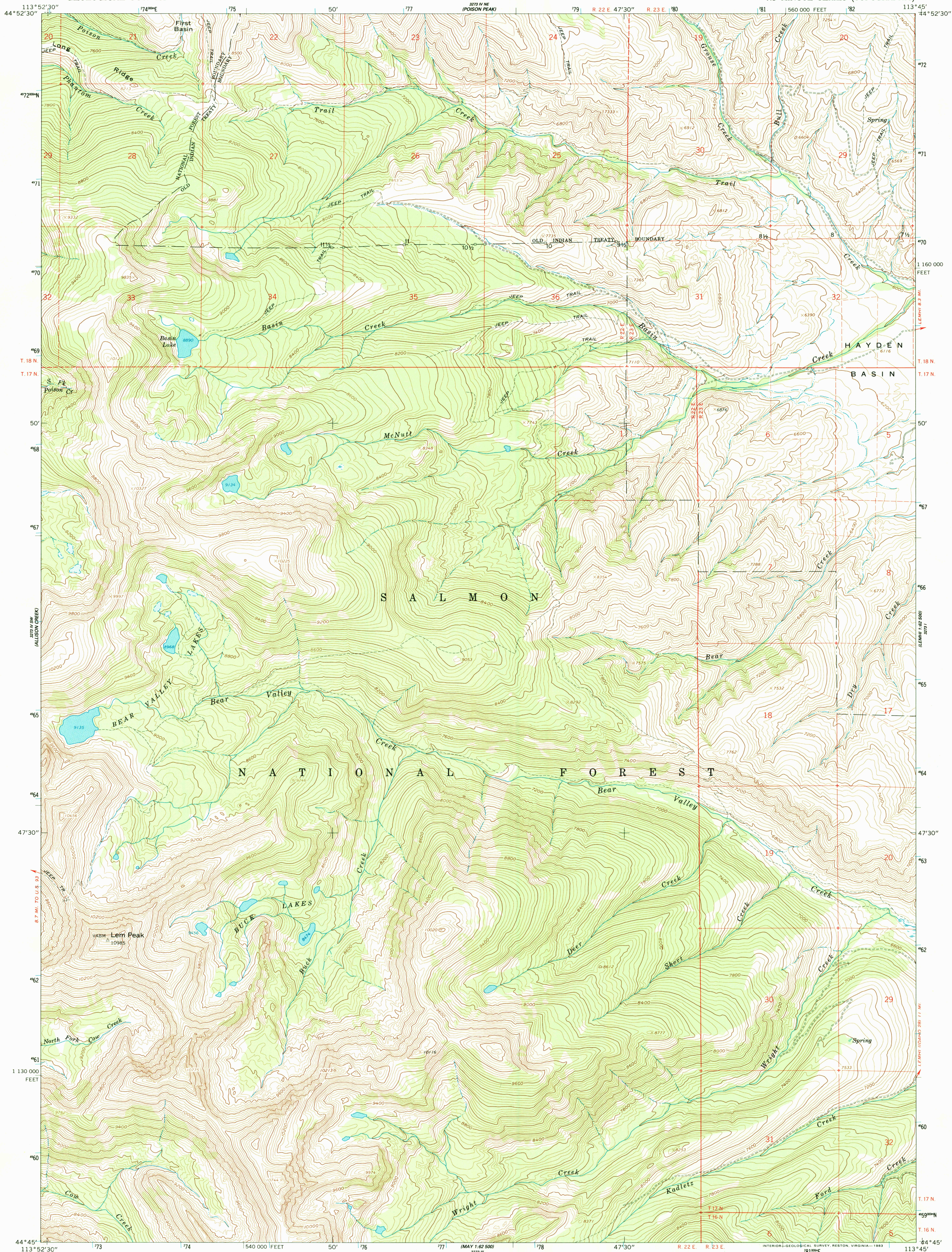


UNITED STATES
DEPARTMENT OF THE INTERIOR
GEOLOGICAL SURVEY

LEM PEAK QUADRANGLE
IDAHO-LEMHI CO.
7.5 MINUTE SERIES (TOPOGRAPHIC)



Mapped, edited, and published by the Geological Survey

Control by USGS and USC&GS

Topography by photogrammetric methods from aerial photographs taken 1957. Field checked 1962

Polyconic projection. 1927 North American datum

10,000-foot grid based on Idaho coordinate system, central zone

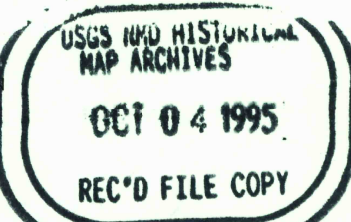
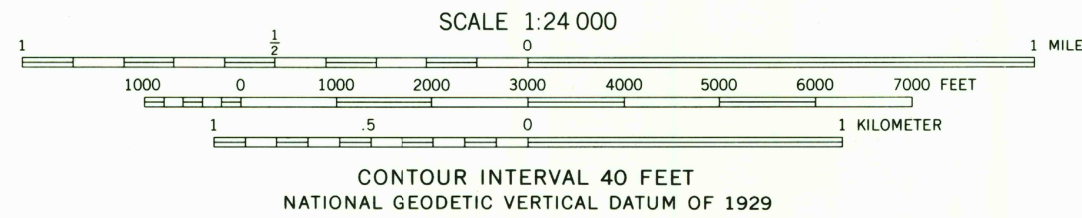
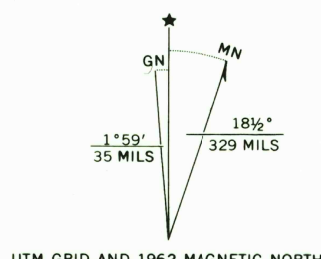
1000-meter Universal Transverse Mercator grid ticks, zone 12, shown in blue

To place on the predicted North American Datum 1983 move the projection lines 12 meters north and 71 meters east as shown by dashed corner ticks

Where omitted, land lines have not been established

Fine red dashed lines indicate selected fence lines

There may be private inholdings within the boundaries of the National or State reservations shown on this map



ROAD CLASSIFICATION
Light duty ————— Unimproved dirt —————

LEM PEAK, IDAHO

N4445-W11345/7.5

1962

DMA 3273 IV SE-SERIES V893

