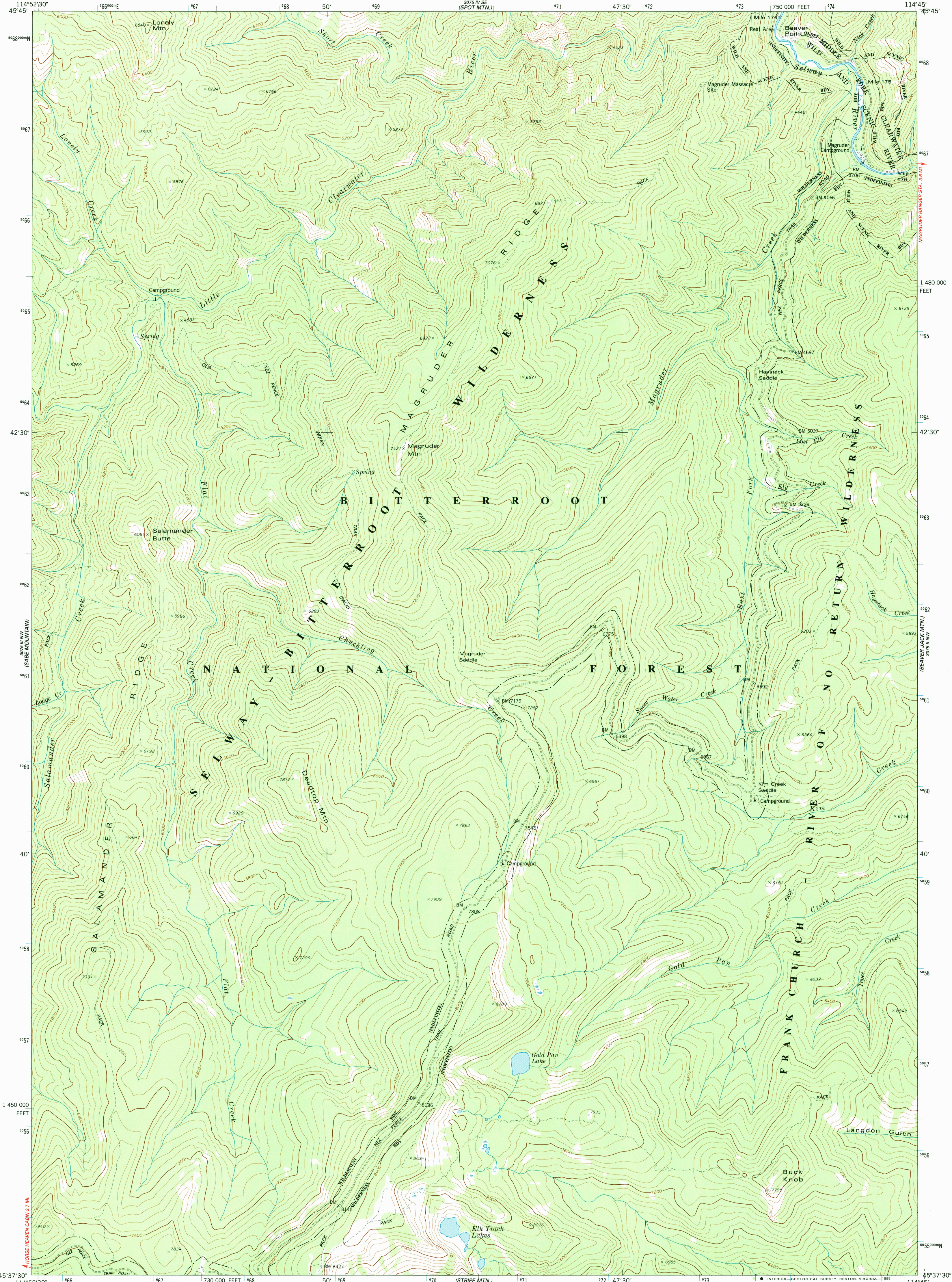
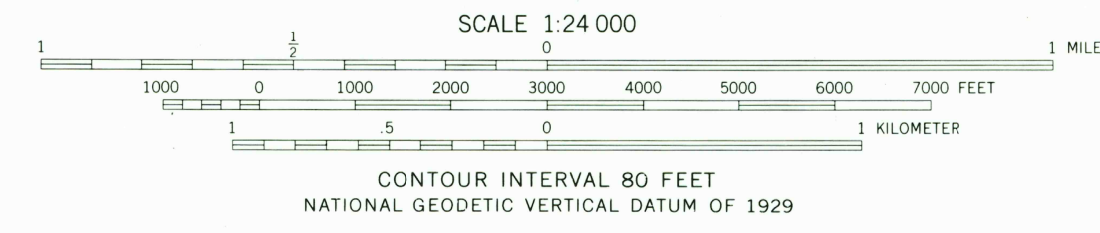
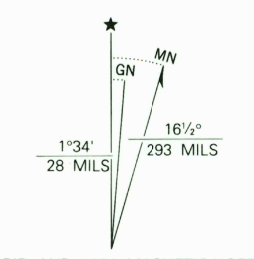


UNITED STATES  
DEPARTMENT OF THE INTERIOR  
GEOLOGICAL SURVEY

MAGRUDER MTN. QUADRANGLE  
IDAHO-IDAHO CO.  
7.5 MINUTE SERIES (TOPOGRAPHIC)



Produced by the United States Geological Survey  
Control by USGS and NOS/NOAA  
Compiled from imagery taken 1972. Photosinspected using  
imagery dated 1991; no major culture or drainage changes  
observed. PLSS and survey control current as of 1974.  
Boundaries and names revised 1994.  
North American Datum of (NAD 27). Projection and  
10000-foot ticks: Idaho Coordinate System, west zone  
(Transverse Mercator).  
Blue 1000-meter Universal Transverse Mercator ticks, zone 11.  
North American Datum of 1983 (NAD 83) is shown by dashed  
corner ticks. The values of the shift between NAD 27 and NAD 83  
for 7.5-minute intersections are obtainable from National Geodetic  
Survey NADCON software.  
There may be private inholdings within the boundaries of the  
National or State reservations shown on this map.  
Land lines have not been established on this area.



ROAD CLASSIFICATION	
Primary highway, hard surface	Light-duty road, hard or improved surface
Secondary highway, hard surface	Unimproved road
Interstate Route	U. S. Route
	State Route

MAGRUDER MTN. ID  
45114-F7-TF-024

1991

DMA 3075 III NE-SERIES V893

