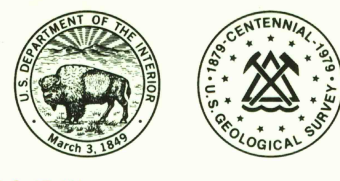
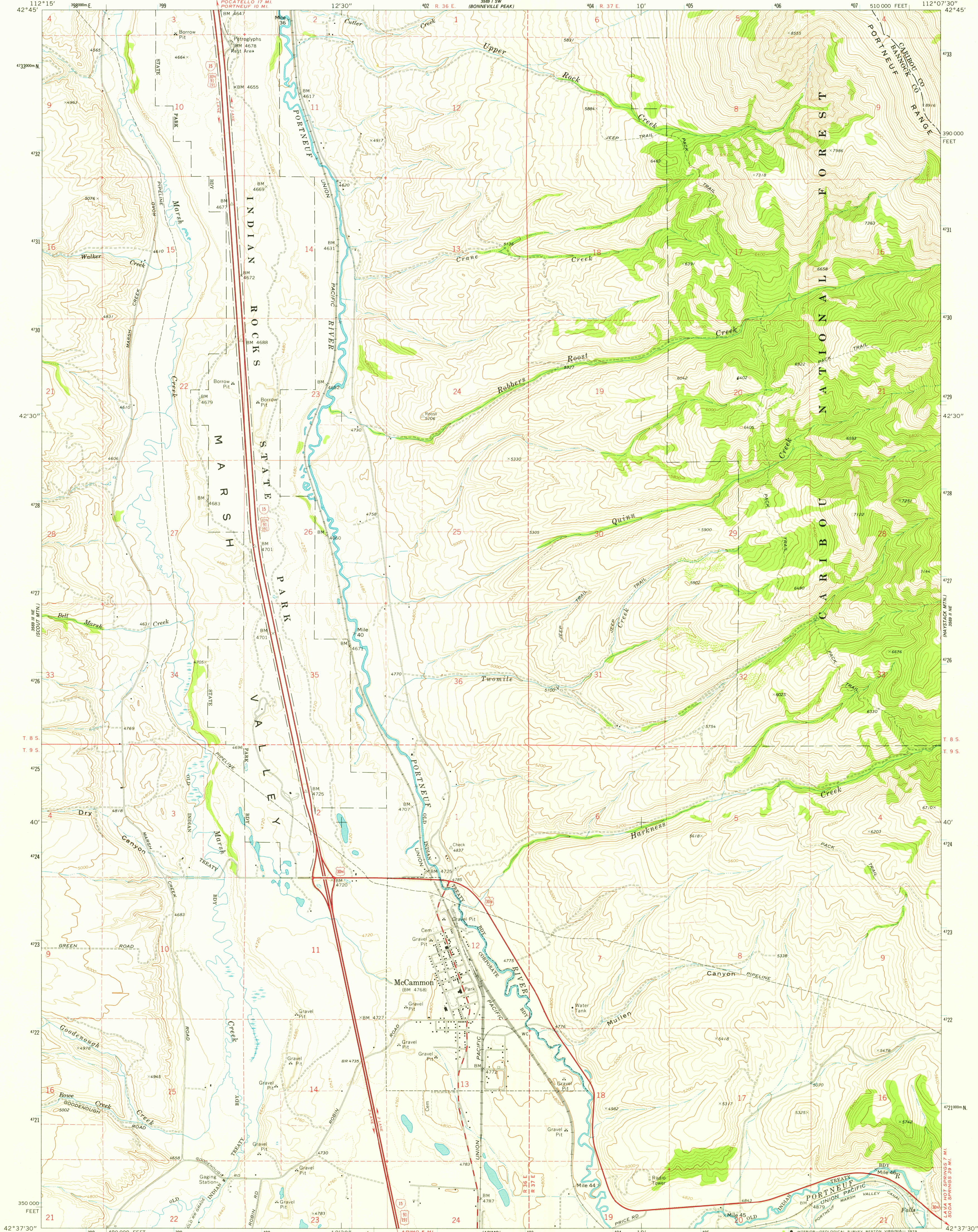


UNITED STATES
DEPARTMENT OF THE INTERIOR
GEOLOGICAL SURVEY



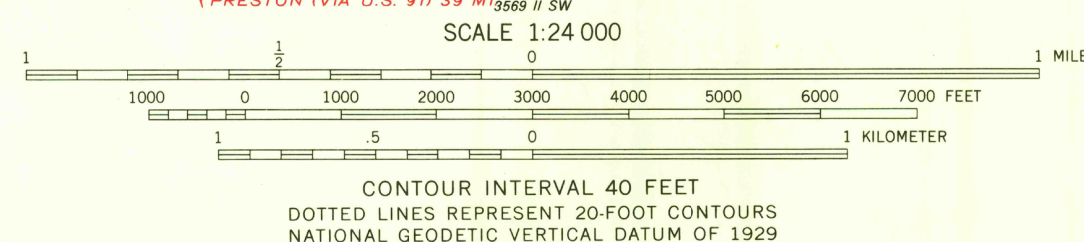
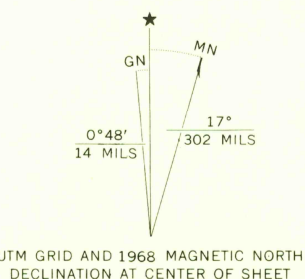
MC CAMMON QUADRANGLE
IDAHO
7.5 MINUTE SERIES (TOPOGRAPHIC)

BEAR CAMP GULCH



Mapped, edited, and published by the Geological Survey

Control by USGS and US&GS
Topography by photogrammetric methods from aerial
photographs taken 1967. Field checked 1968
Polyconic projection. 1927 North American datum
10,000-foot grid based on Idaho coordinate system,
east zone
1000-meter Universal Transverse Mercator grid ticks,
zone 12, shown in blue
Fine red dashed lines indicate selected fence lines



THIS MAP COMPLIES WITH NATIONAL MAP ACCURACY STANDARDS
FOR SALE BY U. S. GEOLOGICAL SURVEY, DENVER, COLORADO 80225, OR RESTON, VIRGINIA 22092
A FOLDER DESCRIBING TOPOGRAPHIC MAPS AND SYMBOLS IS AVAILABLE ON REQUEST

ROAD CLASSIFICATION

Primary highway, hard surface	Light-duty road, hard or improved surface
Secondary highway, hard surface	Unimproved road
Interstate Route	U. S. Route
State Route	

USCS
Historical File
Topographic Division
JUN 28 1979

MC CAMMON, IDAHO
N4237.5—W11207.5/7.5
1968
AMS 3569 11 NW—SERIES V693

4300