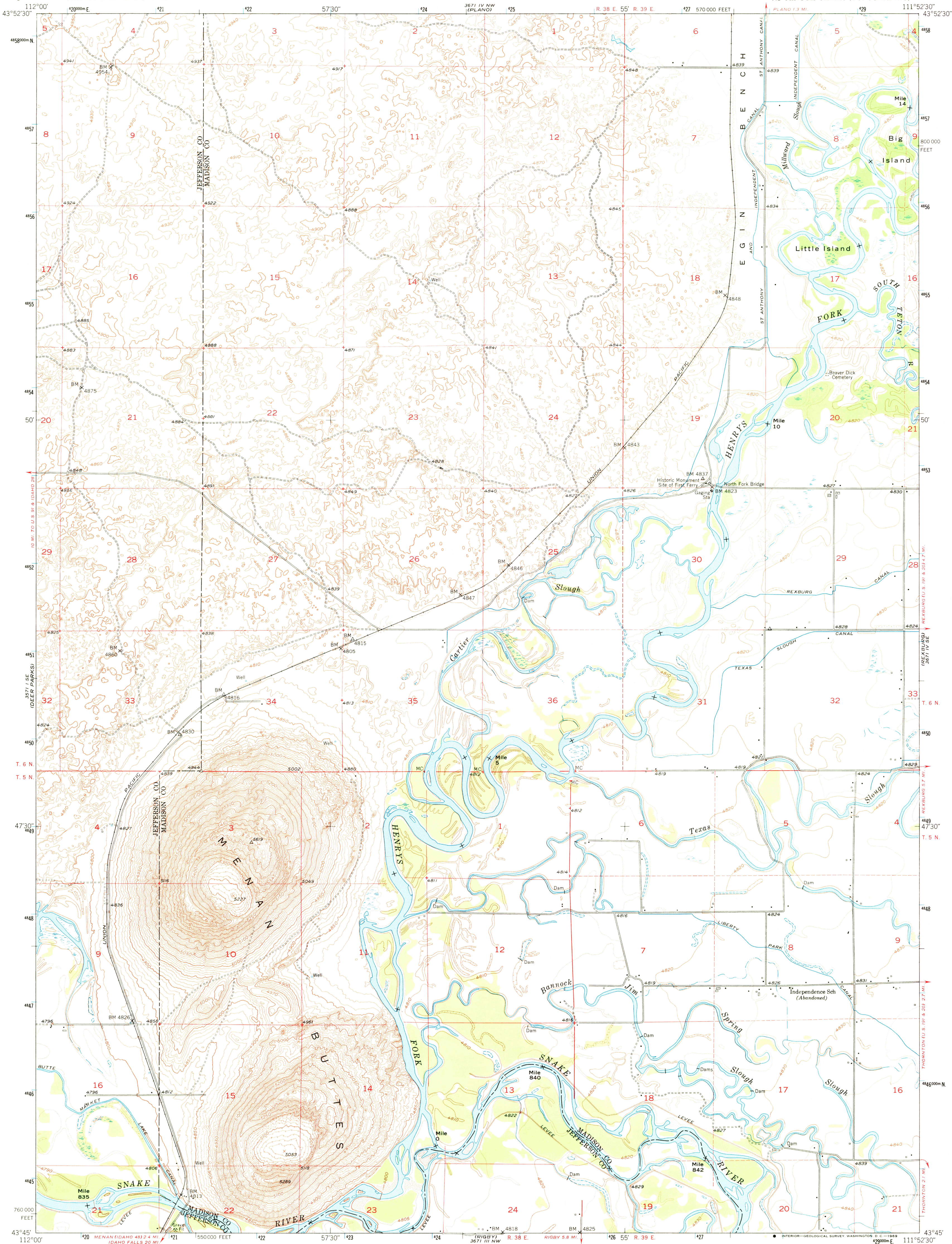
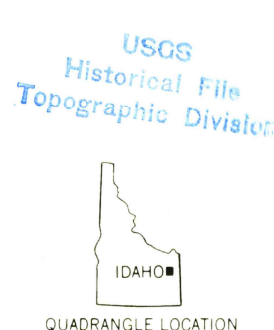
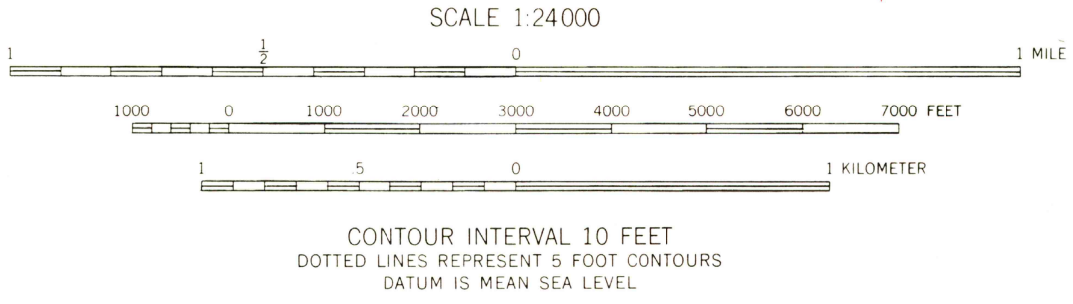
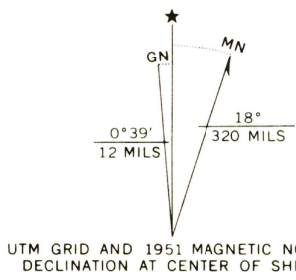


UNITED STATES
DEPARTMENT OF THE INTERIOR
GEOLOGICAL SURVEY

MENAN BUTTES QUADRANGLE
IDAHO
7.5 MINUTE SERIES (TOPOGRAPHIC)



Mapped, edited, and published by the Geological Survey
Control by USGS and USC&GS
Topography from aerial photographs by Kelsh plotter and by plane-table surveys 1951. Aerial photographs taken 1950
Polyconic projection, 1927 North American datum 10,000-foot grid based on Idaho coordinate system, east zone 1000-meter Universal Transverse Mercator grid ticks, zone 12, shown in blue
Dashed land lines indicate approximate locations



ROAD CLASSIFICATION
Light-duty ————— Unimproved dirt —————

MENAN BUTTES, IDAHO
N4345-W11152.5/7.5

1951

AMS 3671 IV SW-SERIES V893

THIS MAP COMPLIES WITH NATIONAL MAP ACCURACY STANDARDS
FOR SALE BY U.S. GEOLOGICAL SURVEY, DENVER, COLORADO 80225, OR WASHINGTON, D.C. 20242
A FOLDER DESCRIBING TOPOGRAPHIC MAPS AND SYMBOLS IS AVAILABLE ON REQUEST
THIS MAP AVAILABLE WITH OR WITHOUT SHADED RELIEF

U.S.G.S.
FILE COPY
TOPOGRAPHIC DIVISION

APR 2 1969