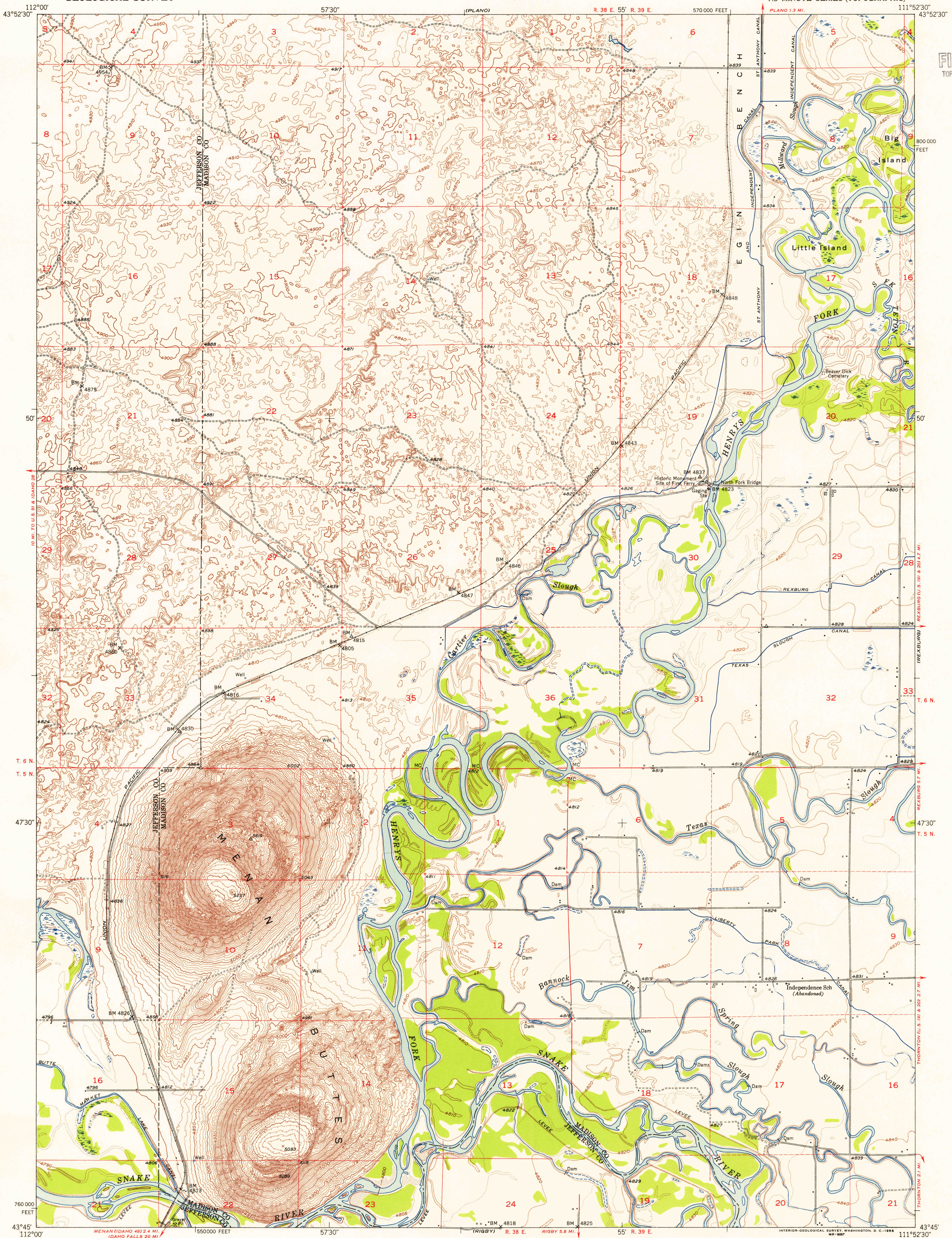


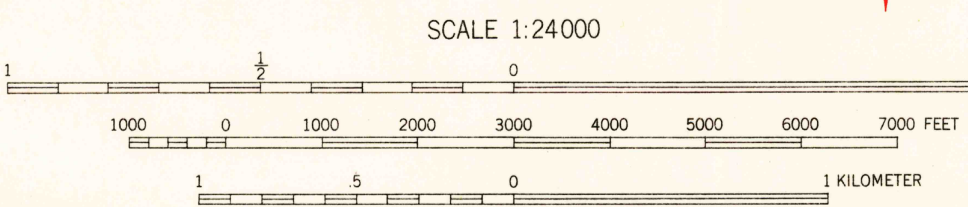
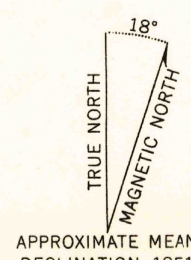
UNITED STATES
DEPARTMENT OF THE INTERIOR
GEOLOGICAL SURVEY

MENAN BUTTES QUADRANGLE
IDAHO
7.5 MINUTE SERIES (TOPOGRAPHIC)

U.S.G.S.
FILE COPY
TOPOGRAPHIC DIVISION



Mapped, edited, and published by the Geological Survey
Control by USGS and USC&GS
Topography from aerial photographs by Kersh plotter
and by plane-table surveys 1951. Aerial photographs taken 1950
Polyconic projection. 1927 North American datum
10,000-foot grid based on Idaho coordinate system, east zone
Dashed land lines indicate approximate locations



CONTOUR INTERVAL 10 FEET
DOTTED LINES REPRESENT 5 FOOT CONTOURS
DATUM IS MEAN SEA LEVEL

THIS MAP COMPLIES WITH NATIONAL MAP ACCURACY STANDARDS
FOR SALE BY U. S. GEOLOGICAL SURVEY, FEDERAL CENTER, DENVER, COLORADO OR WASHINGTON 25, D. C.
A FOLDER DESCRIBING TOPOGRAPHIC MAPS AND SYMBOLS IS AVAILABLE ON REQUEST
THIS MAP AVAILABLE WITH OR WITHOUT SHADED RELIEF OVERPRINT



ROAD CLASSIFICATION
Heavy-duty ———— Light-duty ————
Medium-duty ———— Unimproved dirt ————
U. S. Route ———— State Route ————

MENAN BUTTES, IDAHO
N4345-W1152.5/7.5

1951

U.S.G.S.
FILE COPY
TOPOGRAPHIC DIVISION

OCT 21 1955