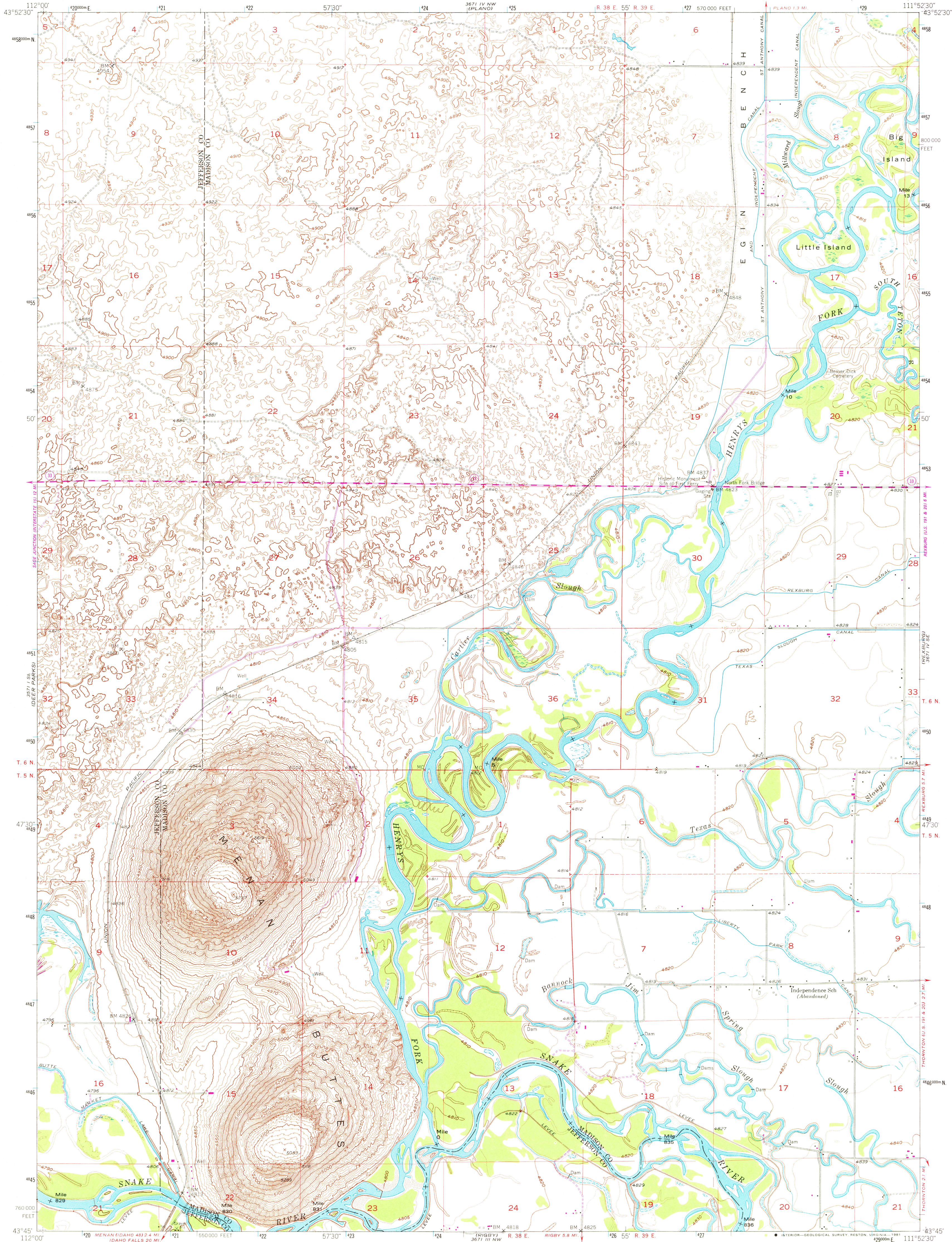


UNITED STATES
DEPARTMENT OF THE INTERIOR
GEOLOGICAL SURVEY

MENAN BUTTES QUADRANGLE
IDAHO
7.5 MINUTE SERIES (TOPOGRAPHIC)



Mapped, edited, and published by the Geological Survey

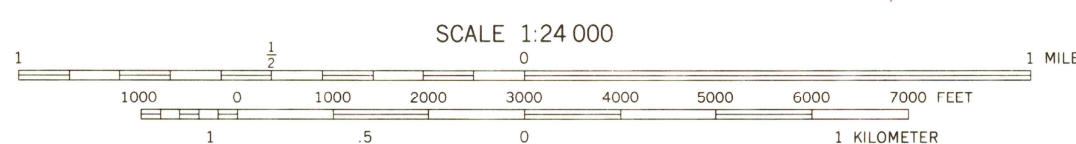
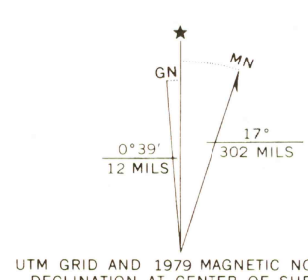
Control by USGS and NOS/NOAA

Topography from aerial photographs by Kelsh plotter and by plane-table surveys 1951. Aerial photographs taken 1950

Polyconic projection. 1927 North American datum 10,000-foot grid based on Idaho coordinate system, east zone 1000-meter Universal Transverse Mercator grid ticks, zone 12, shown in blue

To place on the predicted North American Datum 1983, move the projection lines 12 meters north and 65 meters east as shown by dashed corner ticks

Revisions shown in purple compiled from aerial photographs taken 1976 and other source data. This information not field checked. Map edited 1979



CONTOUR INTERVAL 10 FEET
DOTTED LINES REPRESENT 5-FOOT CONTOURS
NATIONAL GEODETIC VERTICAL DATUM OF 1929



ROAD CLASSIFICATION
Light-duty ————— Unimproved dirt - - - - -

MENAN BUTTES, IDAHO
N4345—W11152.5/7.5

1951
PHOTOREVISED 1979
DMA 3671 IV SW—SERIES V893

THIS MAP COMPLIES WITH NATIONAL MAP ACCURACY STANDARDS
FOR SALE BY U. S. GEOLOGICAL SURVEY, DENVER, COLORADO 80226, OR RESTON, VIRGINIA 22092
A FOLDER DESCRIBING TOPOGRAPHIC MAPS AND SYMBOLS IS AVAILABLE ON REQUEST
THIS MAP AVAILABLE WITH OR WITHOUT SHADED RELIEF

JUL 20 1981
8 700