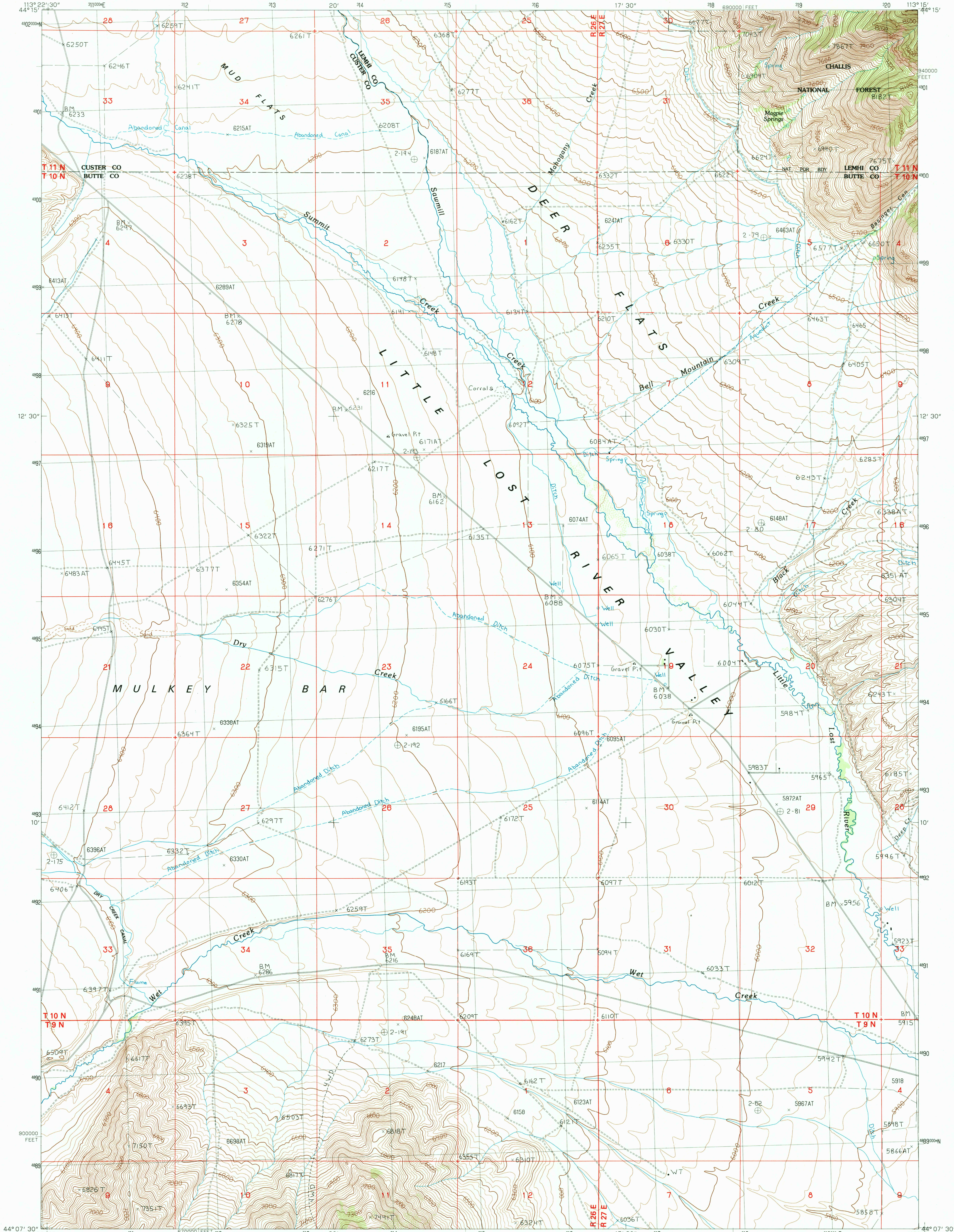


UNITED STATES
DEPARTMENT OF THE INTERIOR
GEOLOGICAL SURVEY

MULKEY BAR QUADRANGLE
IDAHO
7.5 MINUTE SERIES (TOPOGRAPHIC)



PRODUCED BY THE UNITED STATES GEOLOGICAL SURVEY
CONTROL BY USGS, NOS/NOAA
COMPILED FROM AERIAL PHOTOGRAPHS TAKEN 1984
FIELD CHECKED 1983 MAP EDITED 1987
PROJECTION TRANSVERSE MERCATOR
GRID 1000-METER UNIVERSAL TRANSVERSE MERCATOR
ZONE 12
1000-FOOT STATE GRID TICS IDAHO, CENTRAL ZONE
UTM GRID DECLINATION 13° WEST
1987 MAGNETIC NORTH DECLINATION 16° EAST
VERTICAL DATUM NATIONAL GEODETIC VERTICAL DATUM OF 1959
HORIZONTAL DATUM 1927 NORTH AMERICAN DATUM
To place on the predicted North American Datum of 1983,
move the projection lines as shown by dashed corner ticks
(15 meters north and 69 meters east)
There may be private inholdings within the boundaries of any
Federal and State Reservations shown on this map
Where omitted, land lines have not been established
All marginal data and lettering generated and positioned by
automated type placement procedures
No distinction made between houses, barns, and other buildings

PROVISIONAL MAP
Produced from original
manuscript drawings. Infor-
mation shown as of date of
photography. 1

THIS MAP COMPLIES WITH NATIONAL MAP ACCURACY STANDARDS
FOR SALE BY U.S. GEOLOGICAL SURVEY, DENVER, COLORADO 80225
OR RESTON, VIRGINIA 22092

| | | | |
|---|---|---|---|
| 1 | 2 | 3 | 1 |
| 4 | 5 | 6 | 2 |
| 7 | 8 | 9 | 3 |

ADJOINING 7.5' QUADRANGLE NAMES

ROAD LEGEND
Improved Road
Unimproved Road
Trail
Interstate Route
U.S. Route
State Route

MULKEY BAR, IDAHO
PROVISIONAL EDITION 1987

