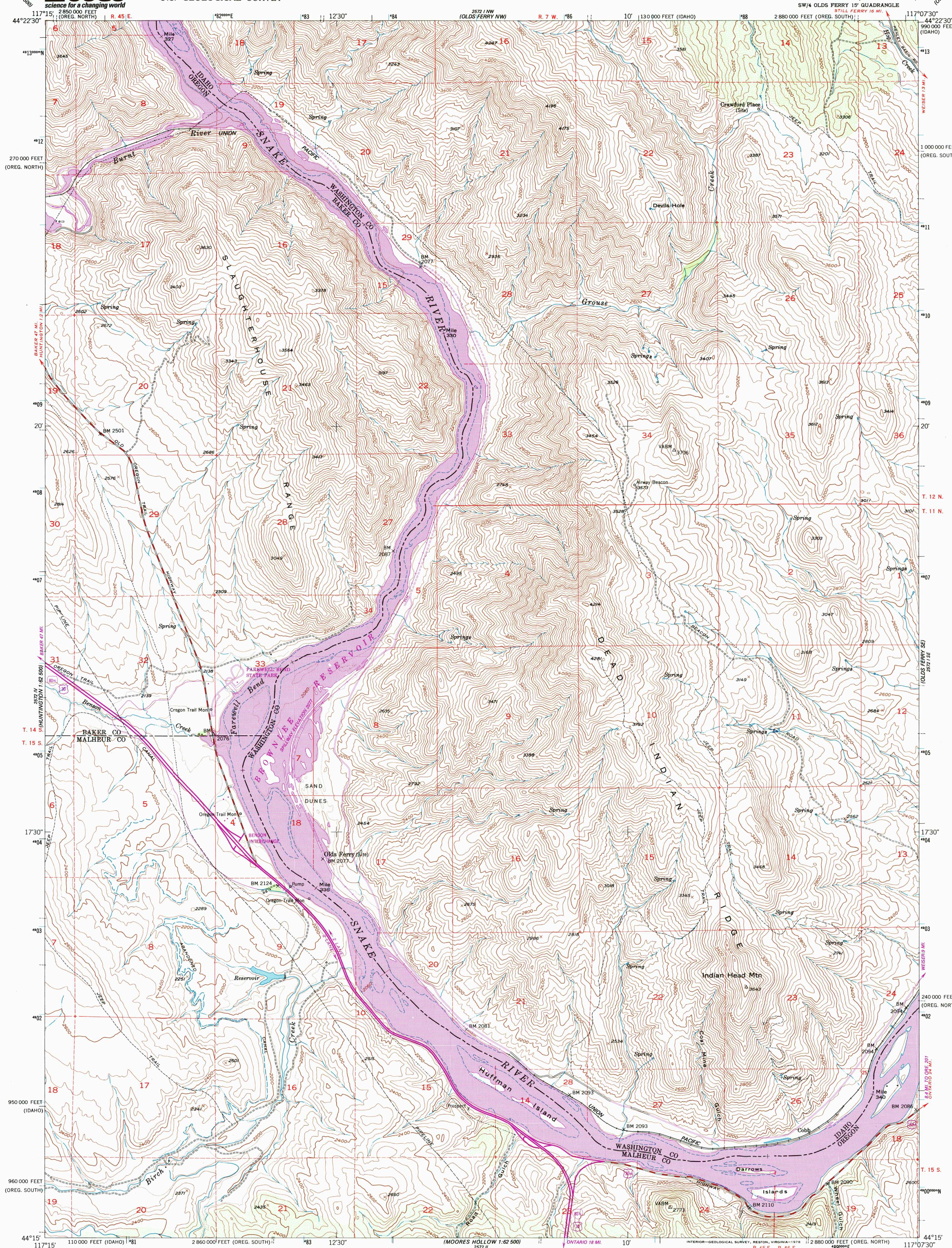




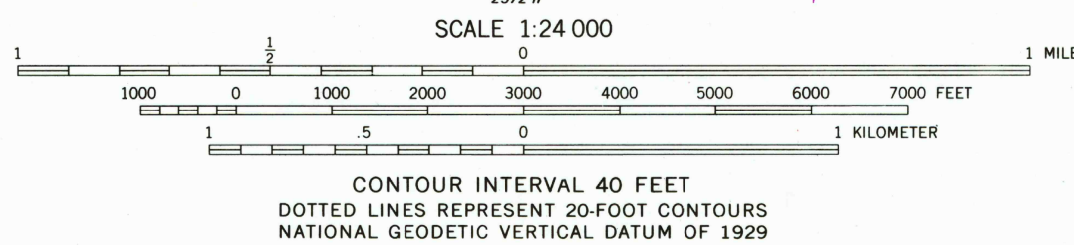
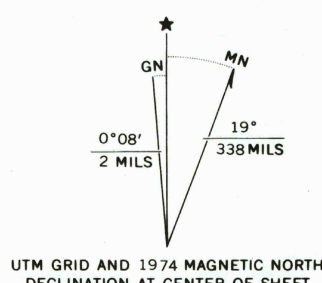
U.S. DEPARTMENT OF THE INTERIOR
U.S. GEOLOGICAL SURVEY

OLDS FERRY QUADRANGLE
IDAHO-OREGON
7.5 MINUTE SERIES (TOPOGRAPHIC)

2572 I NW
(OLDS FERRY 1:62 500)



Mapped, edited, and published by the Geological Survey
Control by USGS and NOS/NOAA
Topography from aerial photographs by multiplex methods
Aerial photographs taken 1950. Field check 1952
Polyconic projection. 1927 North American datum
10,000-foot grids based on Idaho coordinate system, west zone
and Oregon coordinate system, north and south zones
Dashed land lines indicate approximate locations
1000-meter Universal Transverse Mercator grid ticks,
zone 11, shown in blue



ROAD CLASSIFICATION
Heavy-duty 4 LANE 16 LANE Light-duty
Medium-duty 4 LANE 16 LANE Unimproved dirt
U. S. Route State Route
Interstate Route

OLDS FERRY, IDAHO-OREG.
SW 1/4 OLDS FERRY 15' QUADRANGLE
N4415-W11707.5/7.5

1952
PHOTOREVISED 1974
AMS 2572 I SW-SERIES V893

THIS MAP COMPLIES WITH NATIONAL MAP ACCURACY STANDARDS
FOR SALE BY U.S. GEOLOGICAL SURVEY, P.O. BOX 25286, DENVER, COLORADO 80225
A FOLDER DESCRIBING TOPOGRAPHIC MAPS AND SYMBOLS IS AVAILABLE ON REQUEST

Revisions shown in purple compiled from aerial photographs
taken 1974. This information not field checked

HISTORICAL MAP ARCHIVES

DEC 3 1 1998

RECEIVED

USGS NMD

USGS NMD

USGS NMD

USGS NMD

USGS NMD

USGS NMD

USGS NMD

USGS NMD

USGS NMD

USGS NMD

USGS NMD

USGS NMD

USGS NMD

USGS NMD