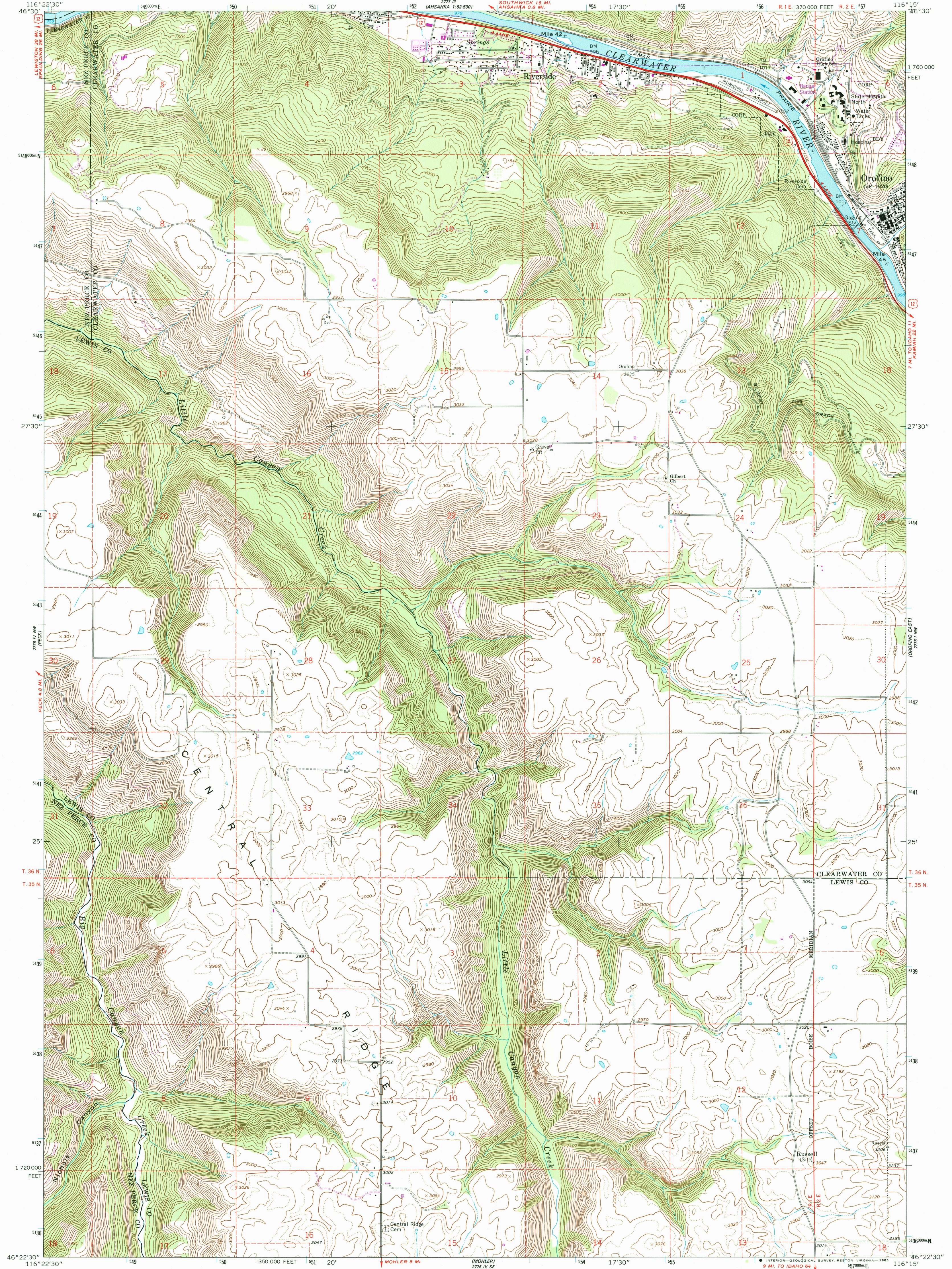


UNITED STATES  
DEPARTMENT OF THE INTERIOR  
GEOLOGICAL SURVEY

OROFINO WEST QUADRANGLE  
IDAHO  
7.5 MINUTE SERIES (TOPOGRAPHIC)



Mapped, edited, and published by the Geological Survey

Control by USGS and NOS/NOAA

Topography by photogrammetric methods from aerial photographs taken 1966. Field checked 1967

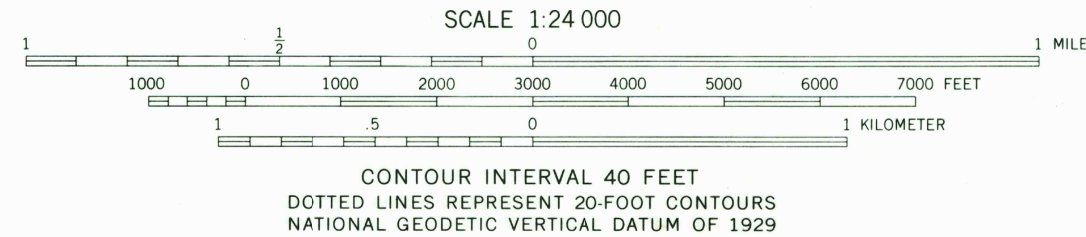
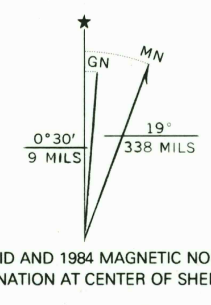
Polyconic projection. 1927 North American datum 10,000-foot grid based on Idaho coordinate system, west zone

1000-meter Universal Transverse Mercator grid ticks, zone 11, shown in blue

To place on the predicted North American Datum 1983, move the projection lines 15 meters north and 76 meters east as shown by dashed corner ticks

Entire area lies within the boundary of the Nez Perce Indian Reservation

There may be private inholdings within the boundaries of the National or State reservations shown on this map



THIS MAP COMPLIES WITH NATIONAL MAP ACCURACY STANDARDS  
FOR SALE BY U. S. GEOLOGICAL SURVEY, DENVER, COLORADO 80225, OR RESTON, VIRGINIA 22092  
A FOLDER DESCRIBING TOPOGRAPHIC MAPS AND SYMBOLS IS AVAILABLE ON REQUEST



ROAD CLASSIFICATION  
Heavy-duty ——— Light-duty ———  
Medium-duty ——— Unimproved dirt ———  
U. S. Route ——— State Route ———

OROFINO WEST, IDAHO  
N4622.5—W11615/7.5

Revisions shown in purple and woodland compiled from  
aerial photographs taken 1982 and other sources  
Partial field check by U. S. Forest Service. Map edited 1984

1967  
PHOTOREVISED 1984  
DMA 2776 IV NE—SERIES V893