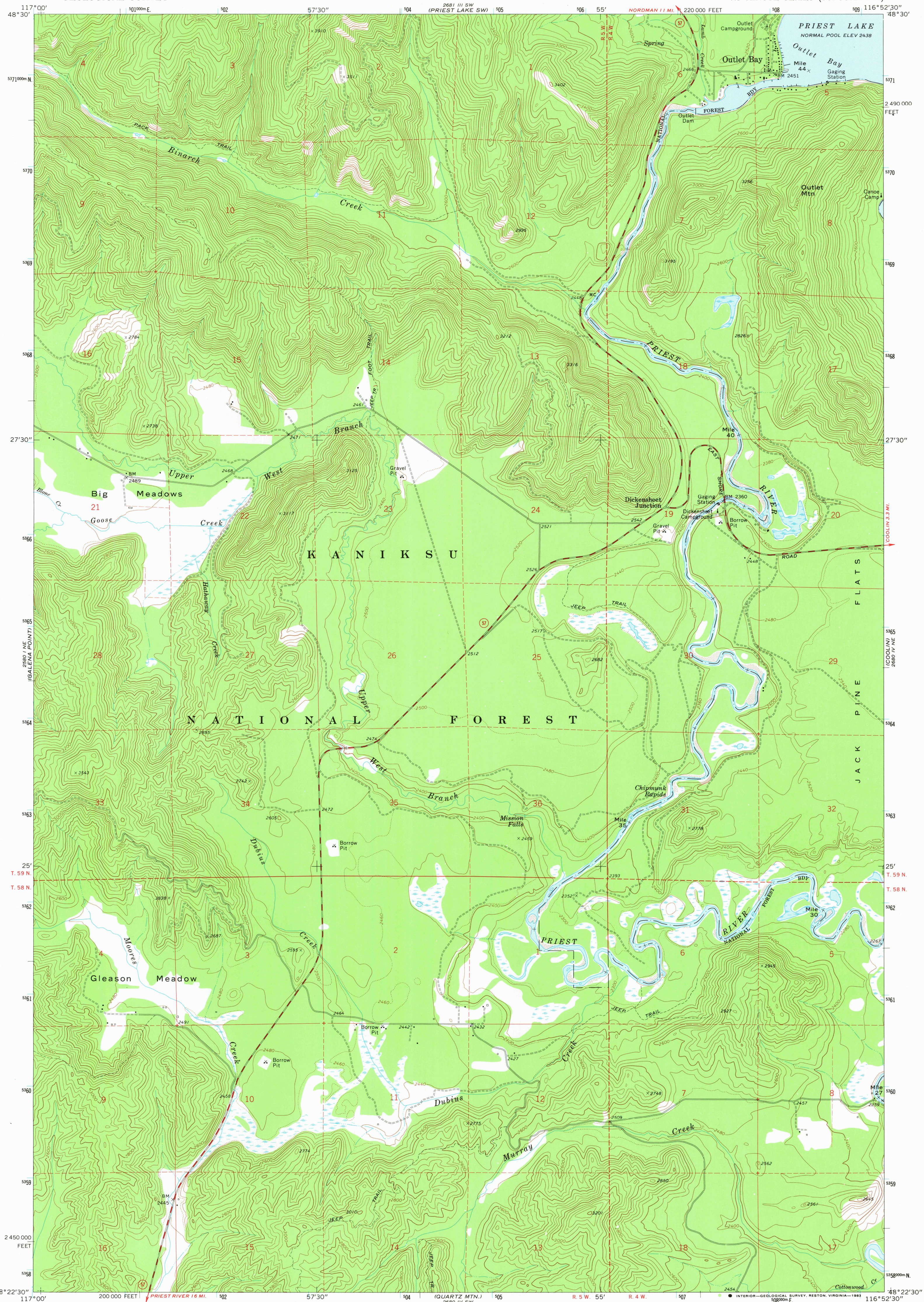
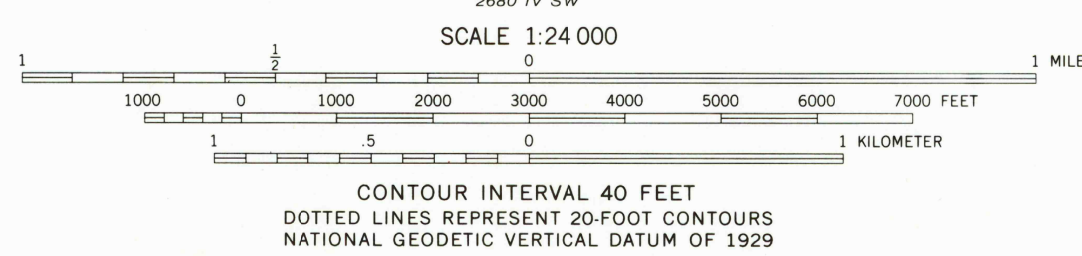
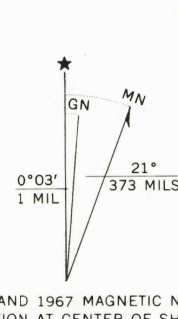


UNITED STATES
DEPARTMENT OF THE INTERIOR
GEOLOGICAL SURVEY

OUTLET BAY QUADRANGLE
IDAHO—BONNER CO.
7.5 MINUTE SERIES (TOPOGRAPHIC)



Maped, edited, and published by the Geological Survey
Control by USGS and USC&GS
Topography by photogrammetric methods from aerial
photographs taken 1966. Field checked 1967
Polyconic projection. 1927 North American datum
10,000-foot grid based on Idaho coordinate system,
west zone
1000-meter Universal Transverse Mercator grid ticks,
zone 11, shown in blue
To place on the predicted North American Datum 1983
move the projection lines 13 meters north and
78 meters east as shown by dashed corner ticks
Fine red dashed lines indicate selected fence lines
There may be private inholdings within the boundaries of
the National or State reservations shown on this map



ROAD CLASSIFICATION
Medium-duty ——— Light-duty ———
Unimproved dirt ———
State Route

OUTLET BAY, IDAHO
N4822.5—W11652.5/7.5

1967

DMA2680 IV NW—SERIES V893

NOV 29 1967