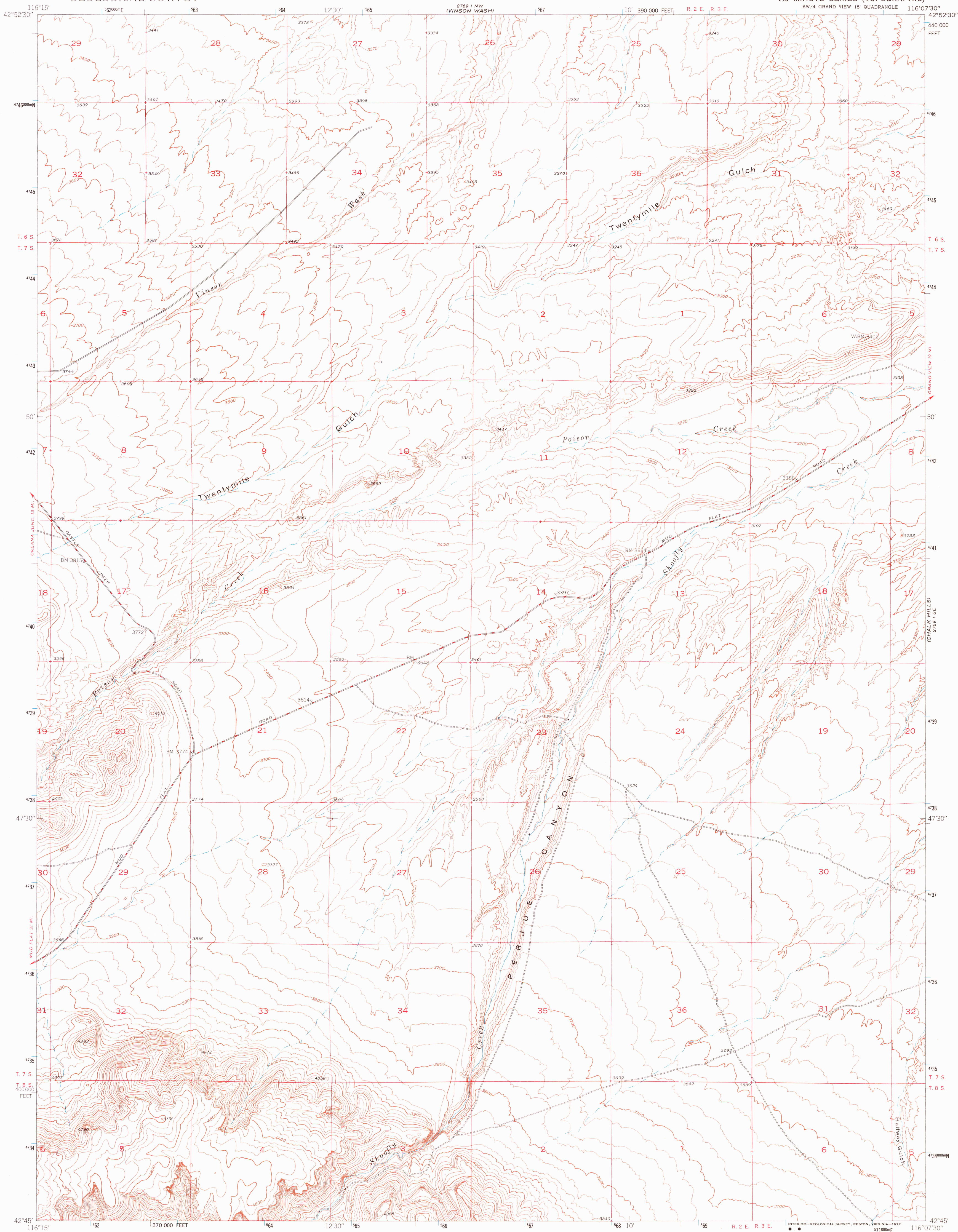


UNITED STATES
DEPARTMENT OF THE INTERIOR
GEOLOGICAL SURVEY

PERJUE CANYON QUADRANGLE
IDAHO—OWYHEE CO.
7.5 MINUTE SERIES (TOPOGRAPHIC)

2769 I NW
(GRAND VIEW)



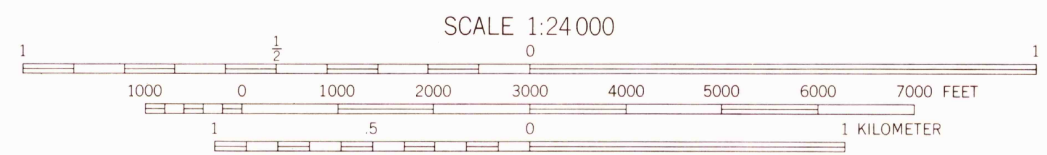
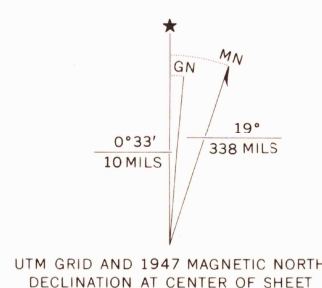
Mapped, edited, and published by the Geological Survey

Control by USGS

Culture and drainage in part compiled from
aerial photographs taken 1946
Topography by plane-table methods, 1947

Polyconic projection. 1927 North American datum
10000-foot grid based on Idaho coordinate system,
west zone.

1000-meter Universal Transverse Mercator grid ticks,
zone 11 shown in blue



CONTOUR INTERVAL 25 FEET
NATIONAL GEODETIC VERTICAL DATUM OF 1929

THIS MAP COMPLIES WITH NATIONAL MAP ACCURACY STANDARDS
FOR SALE BY U. S. GEOLOGICAL SURVEY, DENVER, COLORADO 80225, OR RESTON, VIRGINIA 22092
A FOLDER DESCRIBING TOPOGRAPHIC MAPS AND SYMBOLS IS AVAILABLE ON REQUEST

ROAD CLASSIFICATION	
HARD-SURFACE ALL WEATHER ROADS	DRY WEATHER ROADS
Heavy-duty 4 LANE 6 LANE	Improved dirt
Medium-duty 4 LANE 6 LANE	Unimproved dirt
Loose-surface or narrow hard-surface	

PERJUE CANYON, IDAHO
SW/4 GRAND VIEW 15' QUADRANGLE
N4245—W11607.5/7.5

USGS
Historical File
Topographic Division

1947

AMS 2769 I SW—SERIES V893

1300
DEC 23 1976