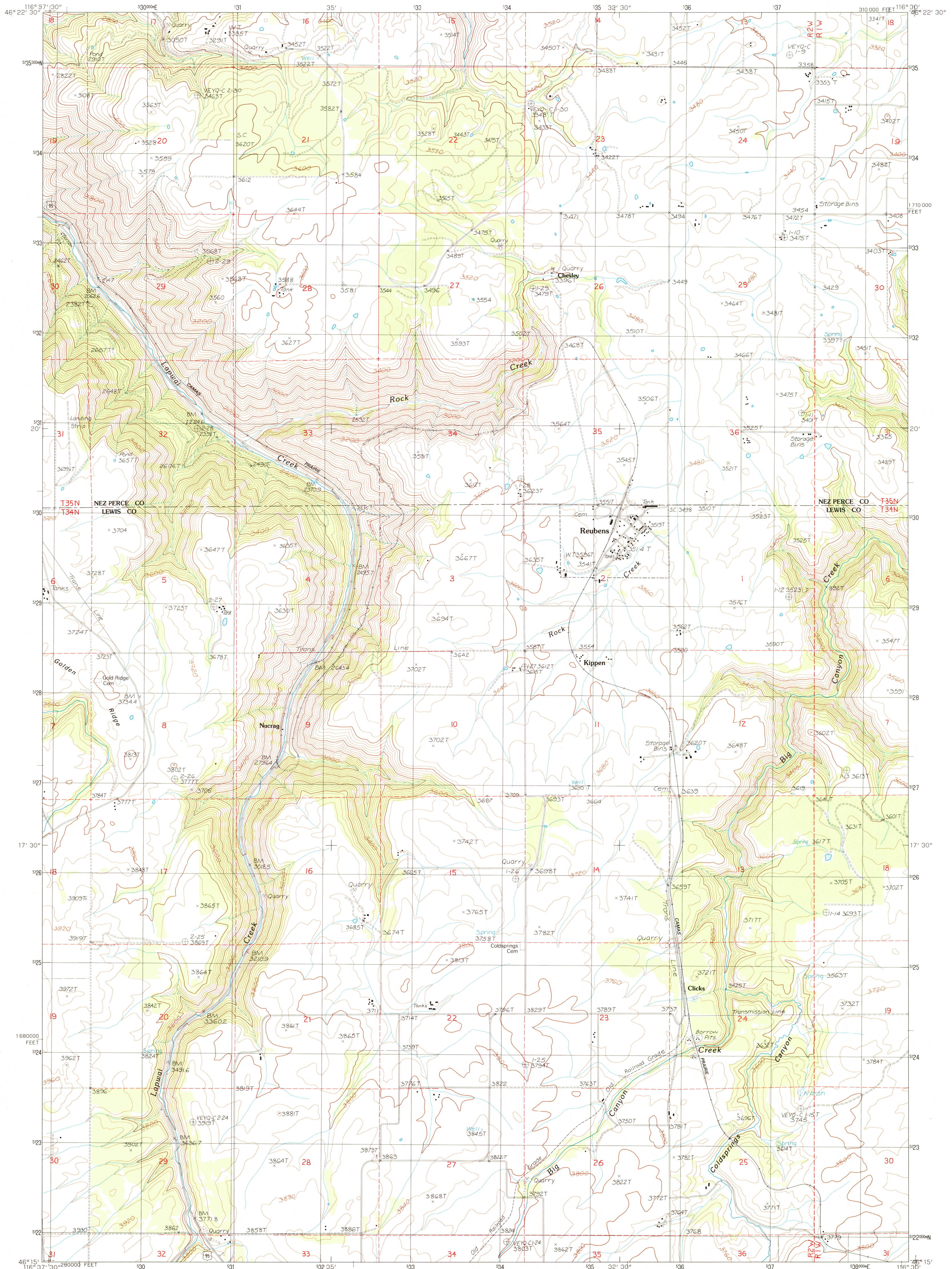


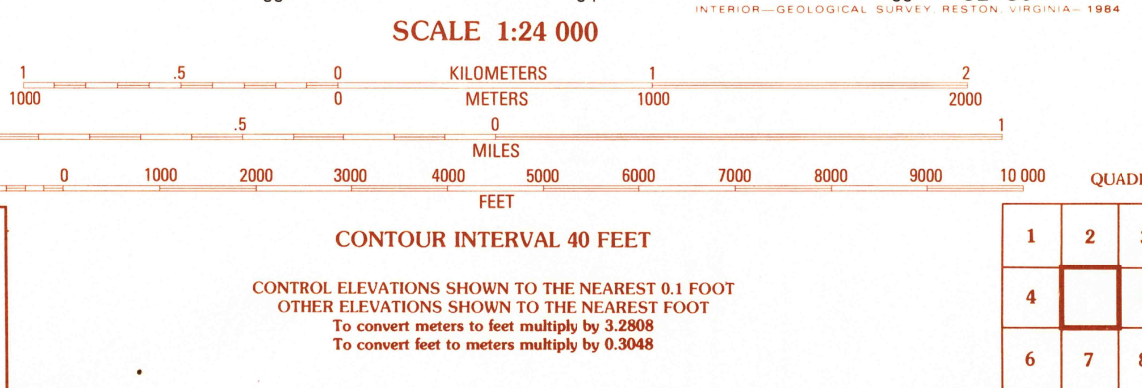
UNITED STATES  
DEPARTMENT OF THE INTERIOR  
GEOLOGICAL SURVEY

REUBENS QUADRANGLE  
IDAHO  
7.5 MINUTE SERIES (TOPOGRAPHIC)



PRODUCED BY THE UNITED STATES GEOLOGICAL SURVEY  
CONTROL BY USGS, NOSNOAA  
COMPILED FROM AERIAL PHOTOGRAPHS TAKEN  
FIELD CHECKED 1982, MAP EDITED 1984  
PROJECTION TRANSVERSE MERCATOR  
GRID 1000-METER UNIVERSAL TRANSVERSE MERCATOR  
10,000-FOOT STATE GRID TICS 1983 WEST ZONE  
UTM GRID DECLINATION 0°19' EAST  
1980 MAGNETIC NORTH DECLINATION 19° EAST  
VERTICAL DATUM NATIONAL GEODETIC VERTICAL DATUM OF 1929  
HORIZONTAL DATUM 1927 NORTH AMERICAN DATUM  
To place on the predicted North American Datum of 1983,  
move the projection lines as shown by dashed corner ticks  
(16 meters north / 77 meters east)  
There may be private inholdings within the boundaries of any  
Federal and State Reservations shown on this map  
Entire area lies within the boundary  
of the Nez Perce Indian Reservation  
No distinction made between houses, barns, and other buildings

PROVISIONAL MAP  
Produced from original  
manuscript drawings. Information  
shown as of date of  
photography.



1	2	3	Caldesac North
4	5	6	Gifford
7	8	9	Peck
10	11	12	Caldesac South
13	14	15	Fletcher
16	17	18	Winchester West
19	20	21	Winchester East
22	23	24	Craigmont

ROAD LEGEND  
Improved Road.....  
Unimproved Road.....  
Trail.....  
Interstate Route U.S. Route State Route

REUBENS, IDAHO  
PROVISIONAL EDITION 1984

THIS MAP COMPLIES WITH NATIONAL MAP ACCURACY STANDARDS  
FOR SALE BY U. S. GEOLOGICAL SURVEY, DENVER, COLORADO 80225, OR RESTON, VIRGINIA 22092

46116-C5-TF-024