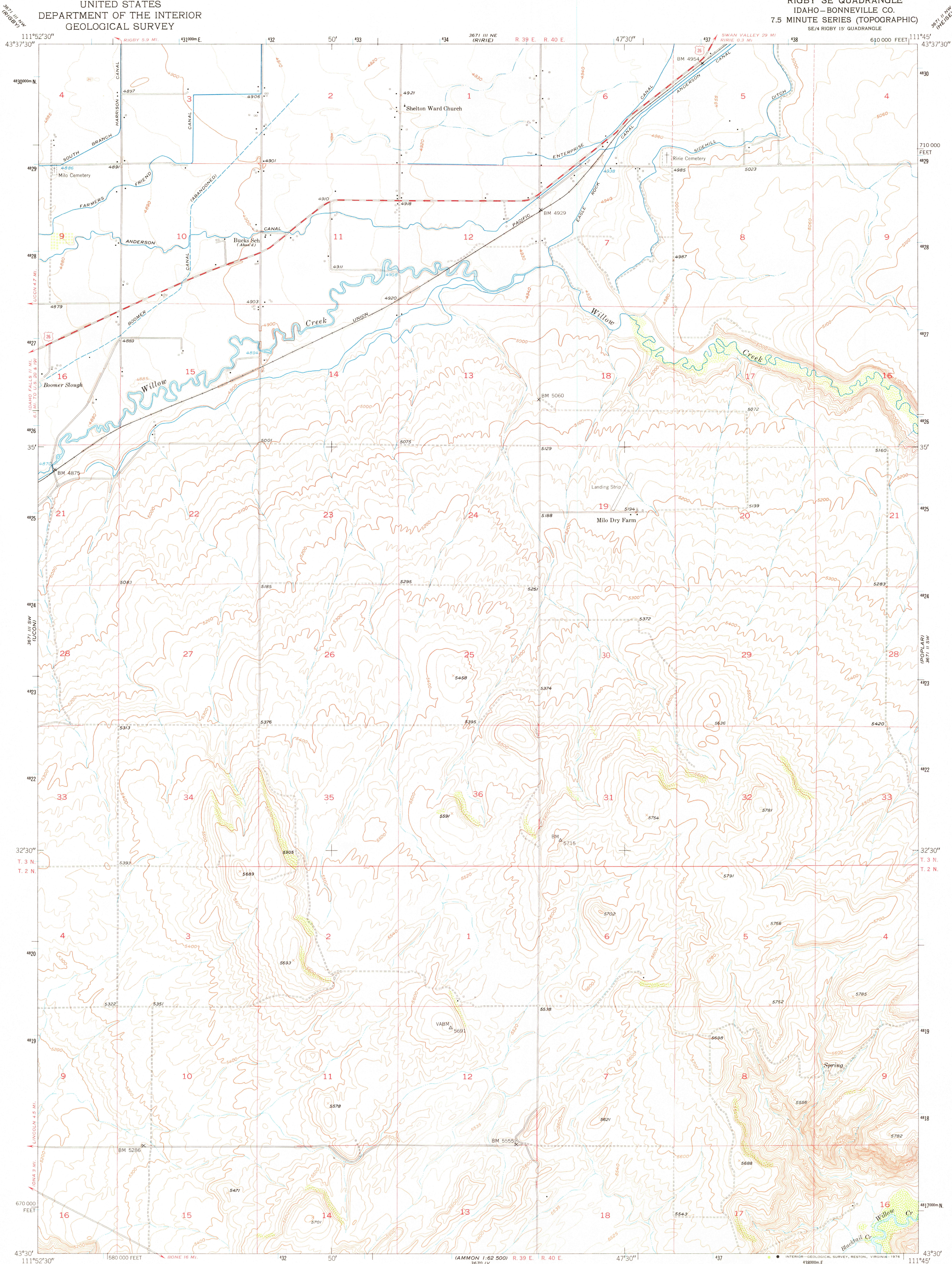
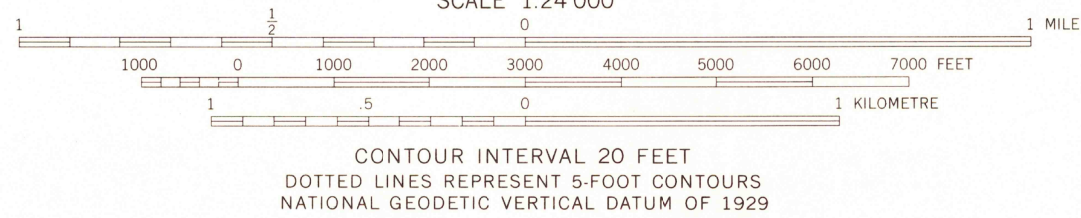
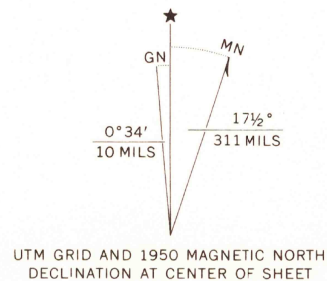


UNITED STATES
DEPARTMENT OF THE INTERIOR
GEOLOGICAL SURVEY

RIGBY SE QUADRANGLE
IDAHO—BONNEVILLE CO.
7.5 MINUTE SERIES (TOPOGRAPHIC)
SE/4 RIGBY 15' QUADRANGLE



Mapped, edited, and published by the Geological Survey
Control by USGS and USC&GS
Topography from aerial photographs by multiplex methods
and by plane-table surveys 1950. Aerial photographs taken 1946
Polyconic projection. 1927 North American datum
10,000-foot grid based on Idaho coordinate system,
east zone
Dashed land lines indicate approximate location
1000 metre Universal Transverse Mercator grid ticks,
zone 12, shown in blue



ROAD CLASSIFICATION			
Heavy-duty	4 LANE 16 LANE	Light-duty	Unimproved dirt
Medium-duty	4 LANE 16 LANE	Unimproved dirt	
U. S. Route		State Route	

THIS MAP COMPLIES WITH NATIONAL MAP ACCURACY STANDARDS
FOR SALE BY U. S. GEOLOGICAL SURVEY, DENVER, COLORADO 80225, OR RESTON, VIRGINIA 22092
A FOLDER DESCRIBING TOPOGRAPHIC MAPS AND SYMBOLS IS AVAILABLE ON REQUEST

USGS
Historical File
Topographic Division

RIGBY SE, IDAHO
SE/4 RIGBY 15' QUADRANGLE
N4330—W11145/7.5
1950
AMS 3671 III SE—SERIES V893

AUG 1 1 1976