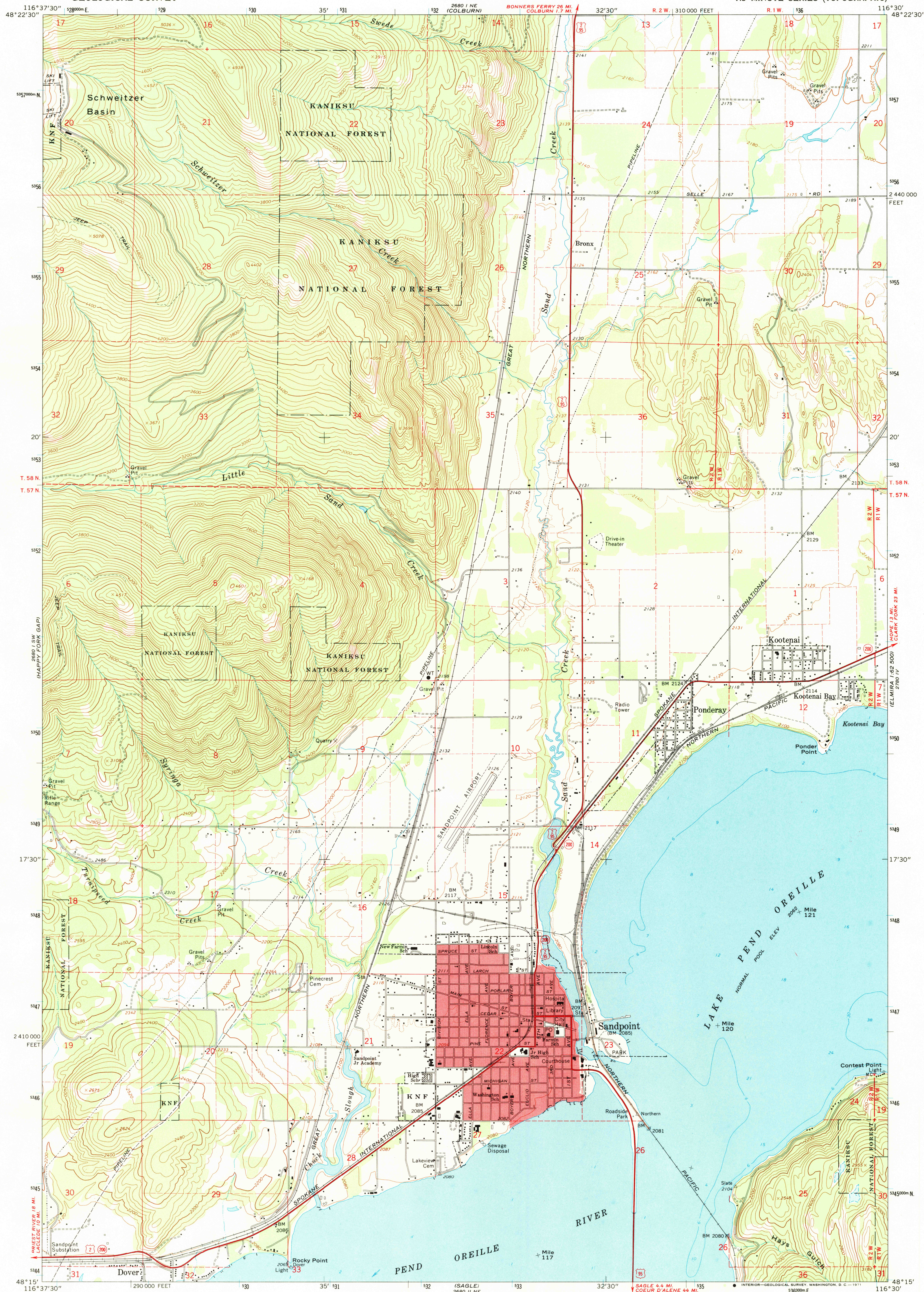


UNITED STATES
DEPARTMENT OF THE INTERIOR
GEOLOGICAL SURVEY

SANDPOINT QUADRANGLE
IDAHO—BONNER CO.
7.5 MINUTE SERIES (TOPOGRAPHIC)



Mapped, edited, and published by the Geological Survey

Control by USGS and USC&GS

Topography by photogrammetric methods from aerial photographs taken 1966. Field checked 1968

Selected hydrographic data compiled from USC&GS Chart 6170 (1967)

This information is not intended for navigational purposes

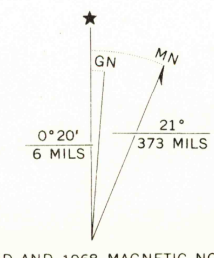
Polyconic projection. 1927 North American datum

10,000-foot grid based on Idaho coordinate system, west zone

1000-meter Universal Transverse Mercator grid ticks, zone 11, shown in blue

Red tint indicates areas in which only landmark buildings are shown

Fine red dashed lines indicate selected fence lines



SCALE 1:24,000
1000 0 1000 2000 3000 4000 5000 6000 7000 FEET
1 KILOMETER

CONTOUR INTERVAL 40 FEET
DOTTED LINES REPRESENT 20-FOOT CONTOURS
DATUM IS MEAN SEA LEVEL
DEPTH CURVES AND SOUNDINGS IN FEET—DATUM IS LAKE ELEVATION 2048 FEET

THIS MAP COMPLIES WITH NATIONAL MAP ACCURACY STANDARDS
FOR SALE BY U.S. GEOLOGICAL SURVEY, DENVER, COLORADO 80225, OR WASHINGTON, D.C. 20242
A FOLDER DESCRIBING TOPOGRAPHIC MAPS AND SYMBOLS IS AVAILABLE ON REQUEST

USGS
Historical File
Topographic Division

ROAD CLASSIFICATION

Primary highway, all weather, hard surface

Light-duty road, all weather, improved surface

Unimproved road, fair or dry weather

U.S. Route

State Route



QUADRANGLE LOCATION

SANDPOINT, IDAHO
N4815—W11630/7.5

1968

AMS 2680 1 SE—SERIES V893

U.S.G.S.
TOPOGRAPHIC DIVISION
HISTORICAL
2755
JUL 1 1971