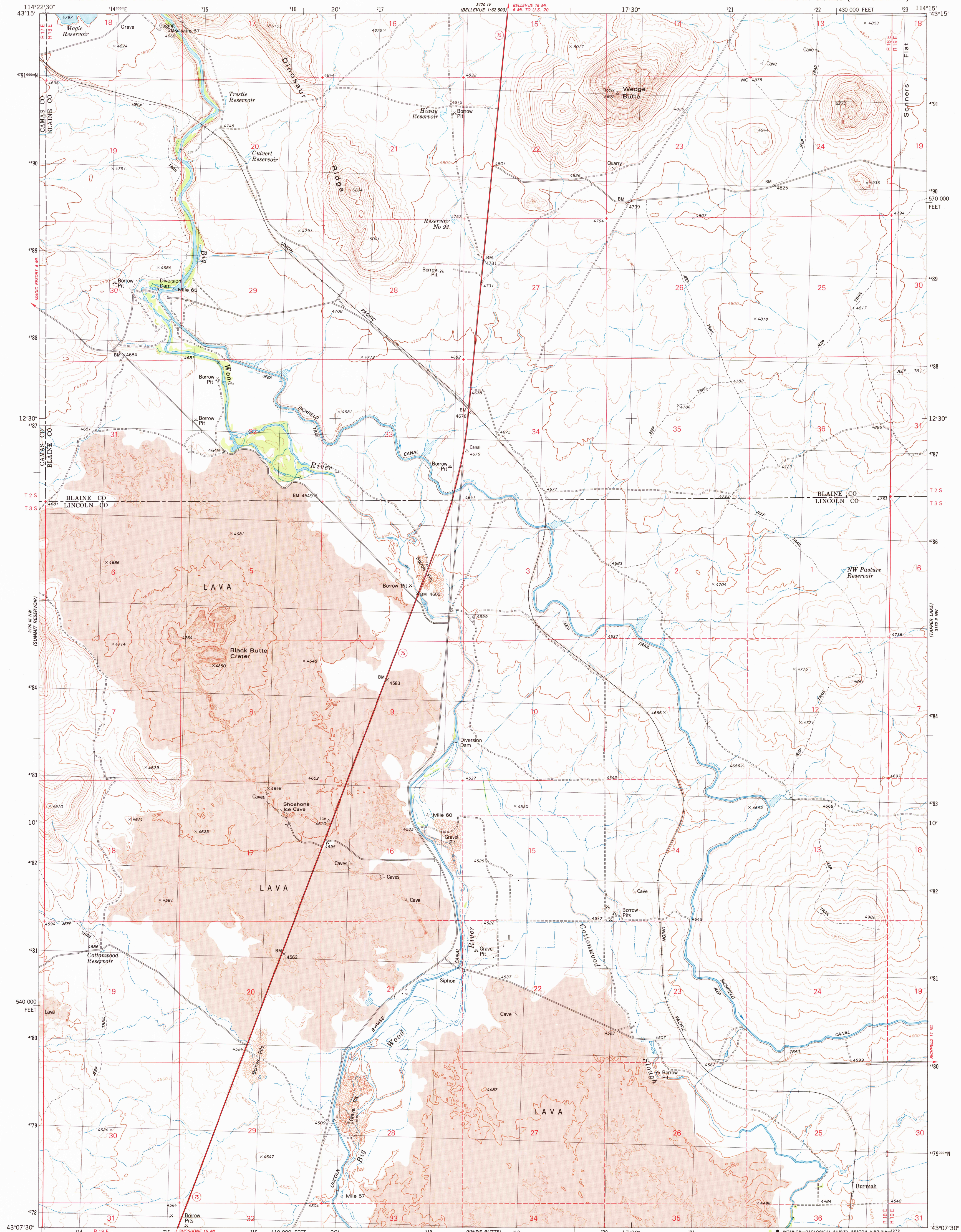


UNITED STATES
DEPARTMENT OF THE INTERIOR
GEOLOGICAL SURVEY



SHOSHONE ICE CAVE QUADRANGLE
IDAHO
7.5 MINUTE SERIES (TOPOGRAPHIC)

3170 IV
BELLEVUE 1:62 500
3170 IV
BELLEVUE 15 MI.
8 MI. TO U.S. 20



Mapped, edited, and published by the Geological Survey

Control by USGS and NOS/NOAA

Topography by photogrammetric methods from aerial photographs taken 1971. Field checked 1973. Map edited 1979

Projection and 10,000-foot grid ticks: Idaho coordinate system, central zone (transverse Mercator)

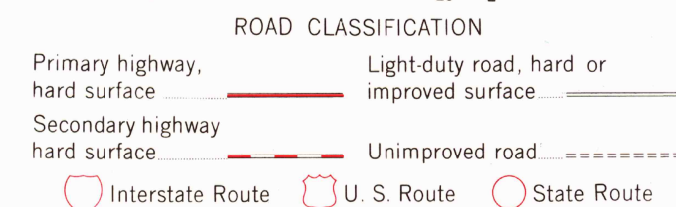
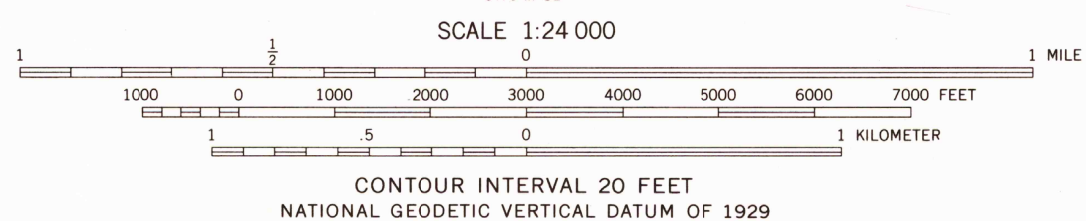
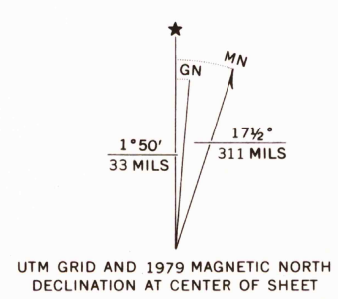
1000-meter Universal Transverse Mercator grid, zone 11

1927 North American datum

To place on the predicted North American Datum 1983 move the projection lines 14 meters north and 72 meters east as shown by dashed corner ticks

Fine red dashed lines indicate selected fence and field lines where generally visible on aerial photographs.

This information is unchecked



THIS MAP COMPLIES WITH NATIONAL MAP ACCURACY STANDARDS
FOR SALE BY U.S. GEOLOGICAL SURVEY, DENVER, COLORADO 80225, OR RESTON, VIRGINIA 22092
A FOLDER DESCRIBING TOPOGRAPHIC MAPS AND SYMBOLS IS AVAILABLE ON REQUEST

USGS SHOSHONE ICE CAVE, IDAHO
Historical File
Topographic Division
N4307.5-W11415.5
1979

DMA 3170 III NE-SERIES V893

SEP 20 1979