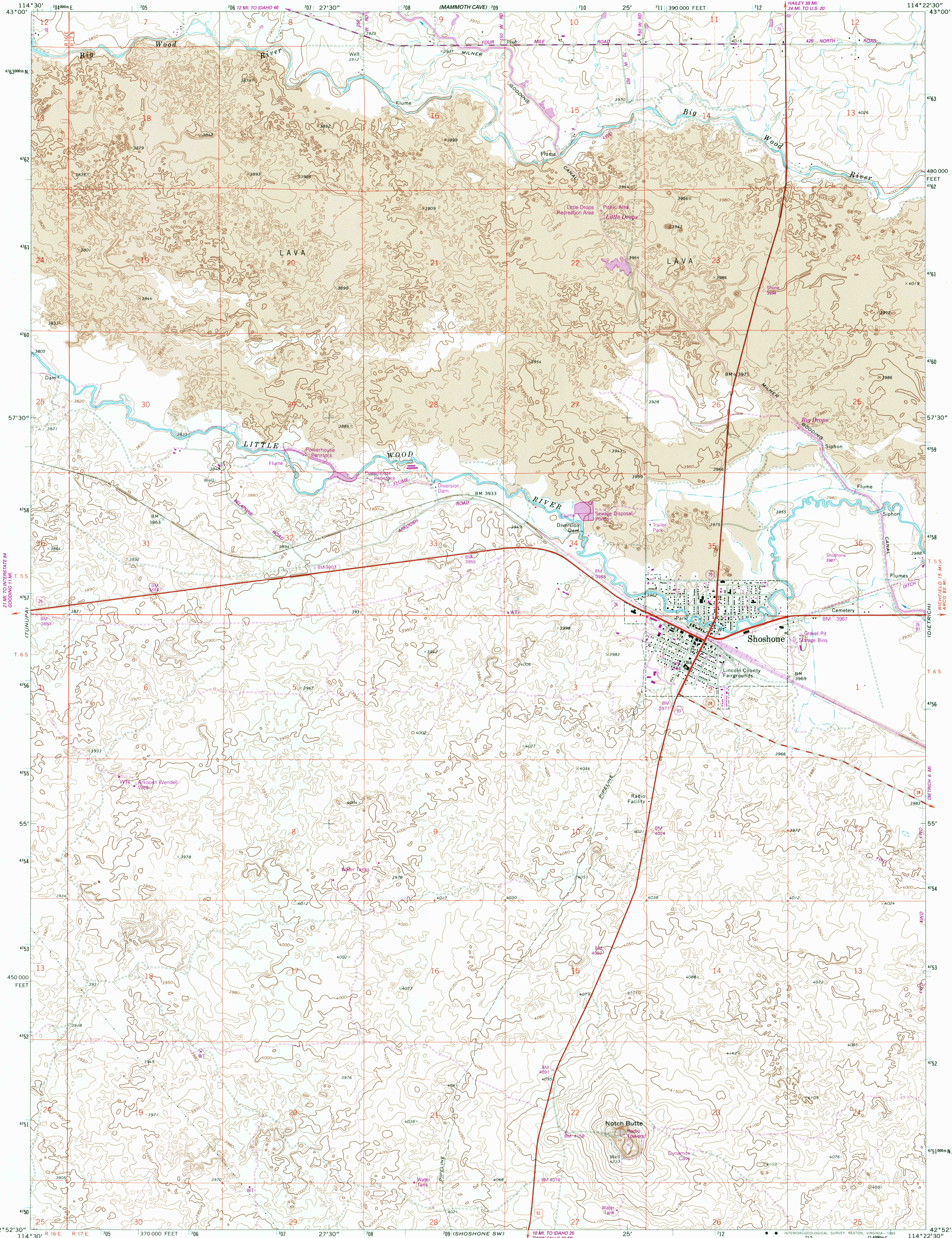


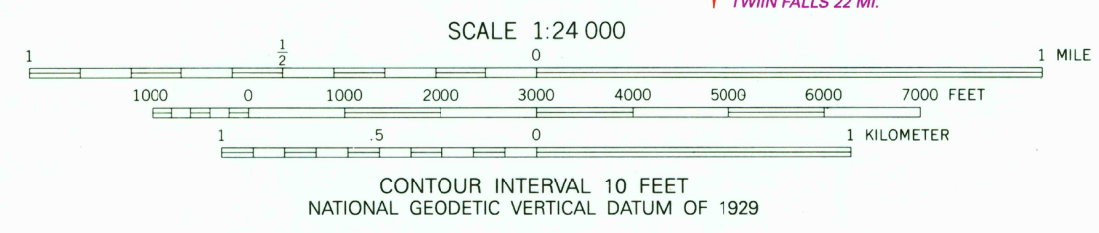
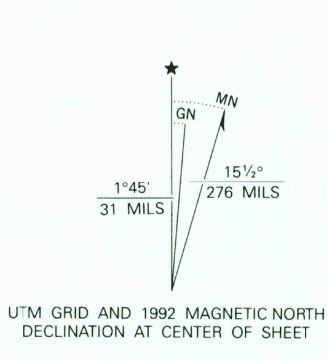
UNITED STATES  
DEPARTMENT OF THE INTERIOR  
GEOLOGICAL SURVEY

SHOSHONE QUADRANGLE  
IDAHO-LINCOLN CO.  
7.5 MINUTE SERIES (TOPOGRAPHIC)

MINZE BUTTE



Produced by the United States Geological Survey  
Control by USGS and NOS/NOAA  
Compiled from aerial photographs taken 1969. Information shown in purple has been updated from aerial photographs taken 1987 and field checked. Map edited 1992. Conflicts may exist between some updated features and previously mapped contours  
North American Datum of 1927 (NAD 27). Projection and 10,000-foot grid ticks: Idaho Coordinate System, central zone (Transverse Mercator). 1000-meter Universal Transverse Mercator grid ticks, zone 11, shown in blue  
The difference between NAD 27 and North American Datum of 1983 (NAD 83) for 7.5 minute sections is given in USGS Bulletin 1875. The NAD 83 is shown by dashed corner ticks



COMPLIES WITH U.S. GEOLOGICAL SURVEY STANDARDS FOR SPATIAL ACCURACY-CLASS 2  
FOR SALE BY U.S. GEOLOGICAL SURVEY  
DENVER, COLORADO 80225, OR RESTON, VIRGINIA 22092  
A FOLDER DESCRIBING TOPOGRAPHIC MAPS AND SYMBOLS IS AVAILABLE ON REQUEST

ROAD CLASSIFICATION  
Primary highway, hard surface  
Secondary highway, hard surface  
Light-duty road, hard or improved surface  
Unimproved road  
Interstate Route  
U.S. Route  
State Route



SHOSHONE, IDAHO  
42114-H4-TF-024

1971  
REVISED 1992  
DMA 3169 IV NW-SERIES V893

