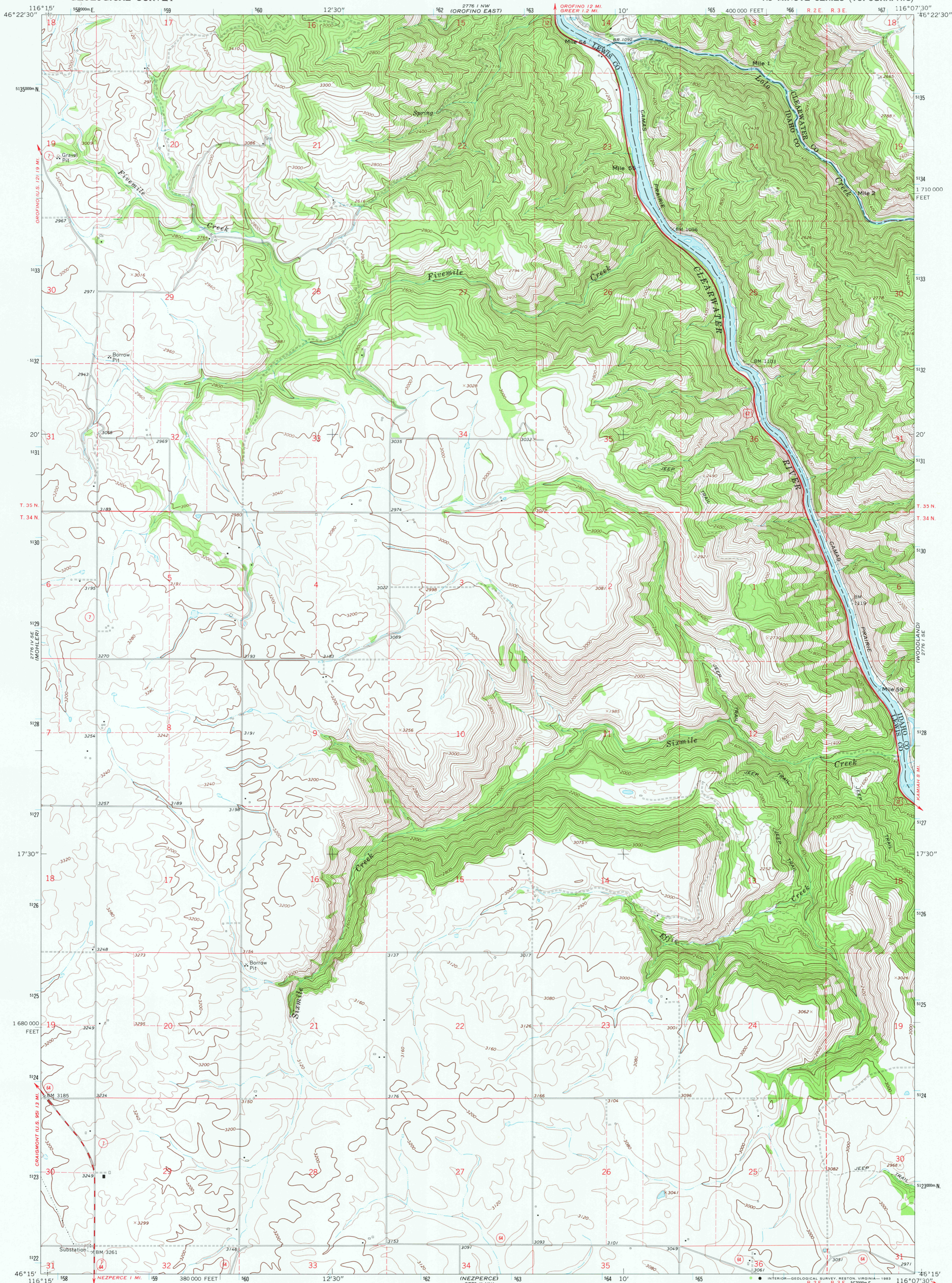


UNITED STATES
DEPARTMENT OF THE INTERIOR
GEOLOGICAL SURVEY

SIXMILE CREEK QUADRANGLE
IDAHO
7.5 MINUTE SERIES (TOPOGRAPHIC)



Mapped, edited, and published by the Geological Survey
Control by USGS and USC&GS

Topography by photogrammetric methods from aerial
photographs taken 1966. Field checked 1967

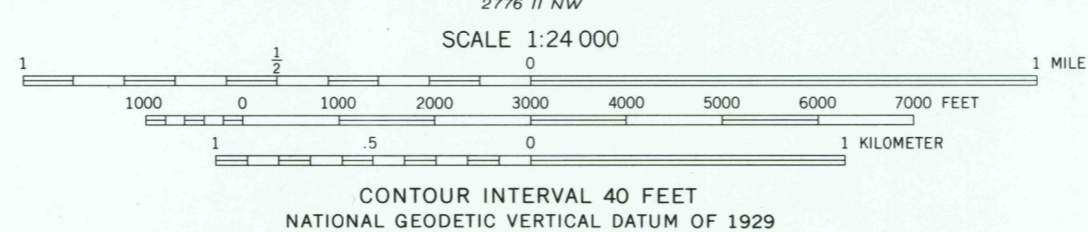
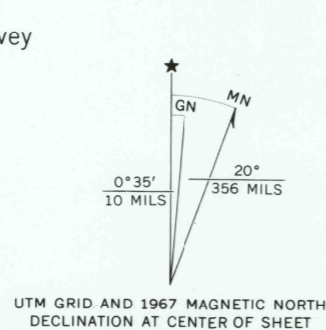
Polyconic projection. 1927 North American datum
10,000-foot grid based on Idaho coordinate system,
west zone

1000-meter Universal Transverse Mercator grid ticks,
zone 11; shown in blue

To place on the predicted North American Datum 1983
move the projection lines 15 meters north and
76 meters east as shown by dashed corner ticks

Fine red dashed lines indicate selected fence lines

Entire area lies within the boundary
of the Nez Perce Indian Reservation



ROAD CLASSIFICATION
Heavy-duty ——— Light-duty ———
Medium-duty - - - - - Unimproved dirt - - - - -
U.S. Route State Route

SIXMILE CREEK, IDAHO
N4615—W11607.5/7.5

1967

DMA 2776 I SW—SERIES V893

THIS MAP COMPLIES WITH NATIONAL MAP ACCURACY STANDARDS
FOR SALE BY U.S. GEOLOGICAL SURVEY, DENVER, COLORADO 80225, OR RESTON, VIRGINIA 22092
A FOLDER DESCRIBING TOPOGRAPHIC MAPS AND SYMBOLS IS AVAILABLE ON REQUEST

APR 11 1968

100