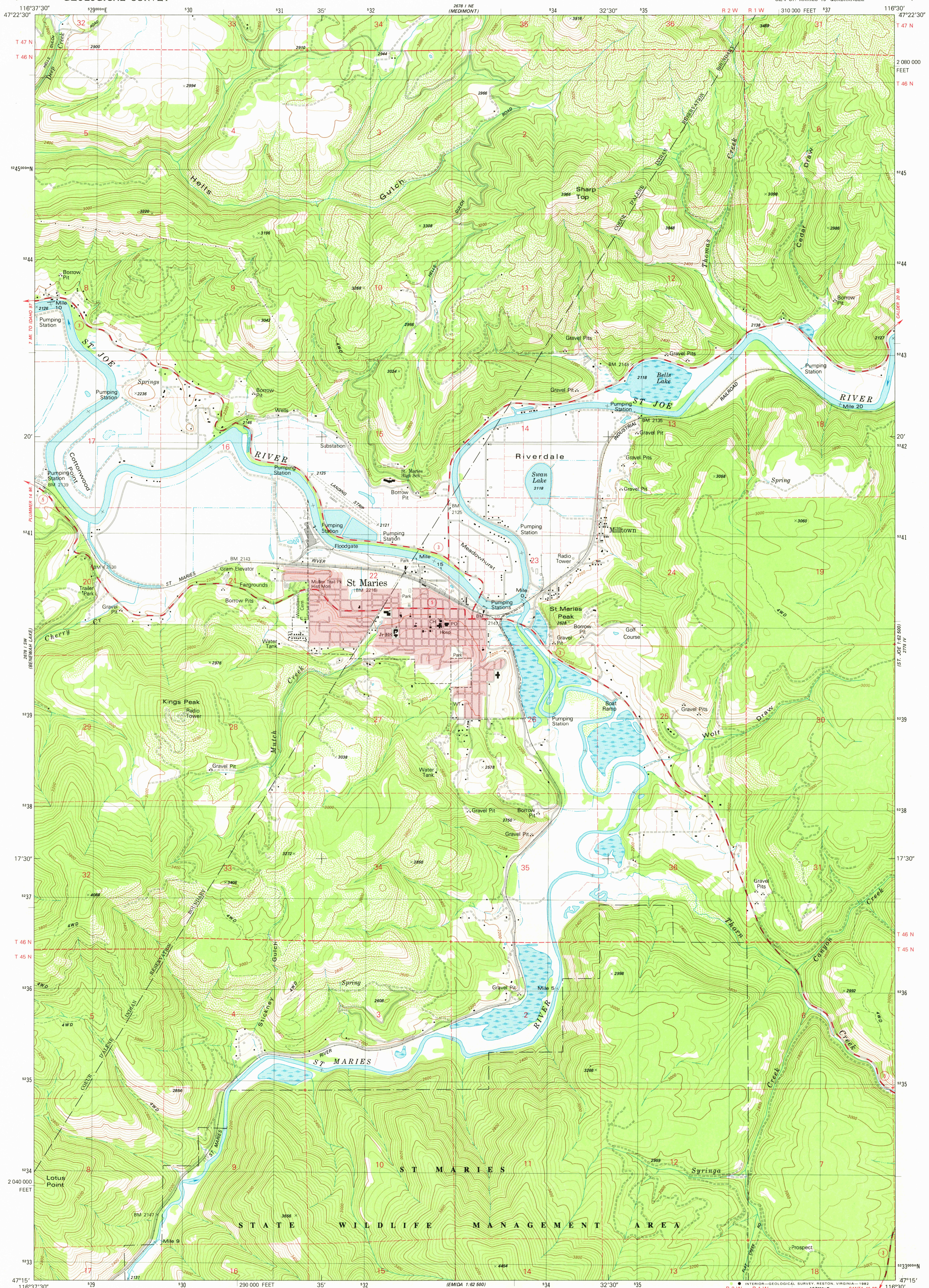


UNITED STATES
DEPARTMENT OF THE INTERIOR
GEOLOGICAL SURVEY

ST. MARIES QUADRANGLE
IDAHO-BENEWAH CO.
7.5 MINUTE SERIES (TOPOGRAPHIC)
8E/4 ST. MARIES 15' QUADRANGLE



Mapped, edited, and published by the Geological Survey

Control by USGS and NOS/NOAA

Topography by photogrammetric methods from aerial photographs

taken 1975. Field checked 1976. Map edited 1981

Projection and 10,000-foot grid ticks: Idaho coordinate

system, west zone (transverse Mercator)

1000-meter Universal Transverse Mercator grid, zone 11

1927 North American Datum

To place on the predicted North American Datum 1983

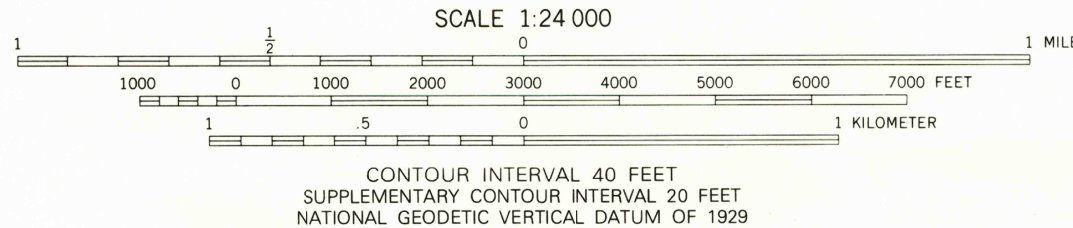
move the projection lines 14 meters north and

77 meters east as shown by dashed corner ticks

Red tint indicates areas in which only landmark buildings are shown

There may be private inholdings within the boundaries of

the National or State reservations shown on this map



ROAD CLASSIFICATION	
Primary highway, hard surface	Light-duty road, hard or improved surface
Secondary highway, hard surface	Unimproved road
Interstate Route	U. S. Route
	State Route

ST. MARIES, IDAHO
8E/4 ST. MARIES 15' QUADRANGLE
N4715-W11630/7.5

1981

DMA 2678 I SE--SERIES V893