

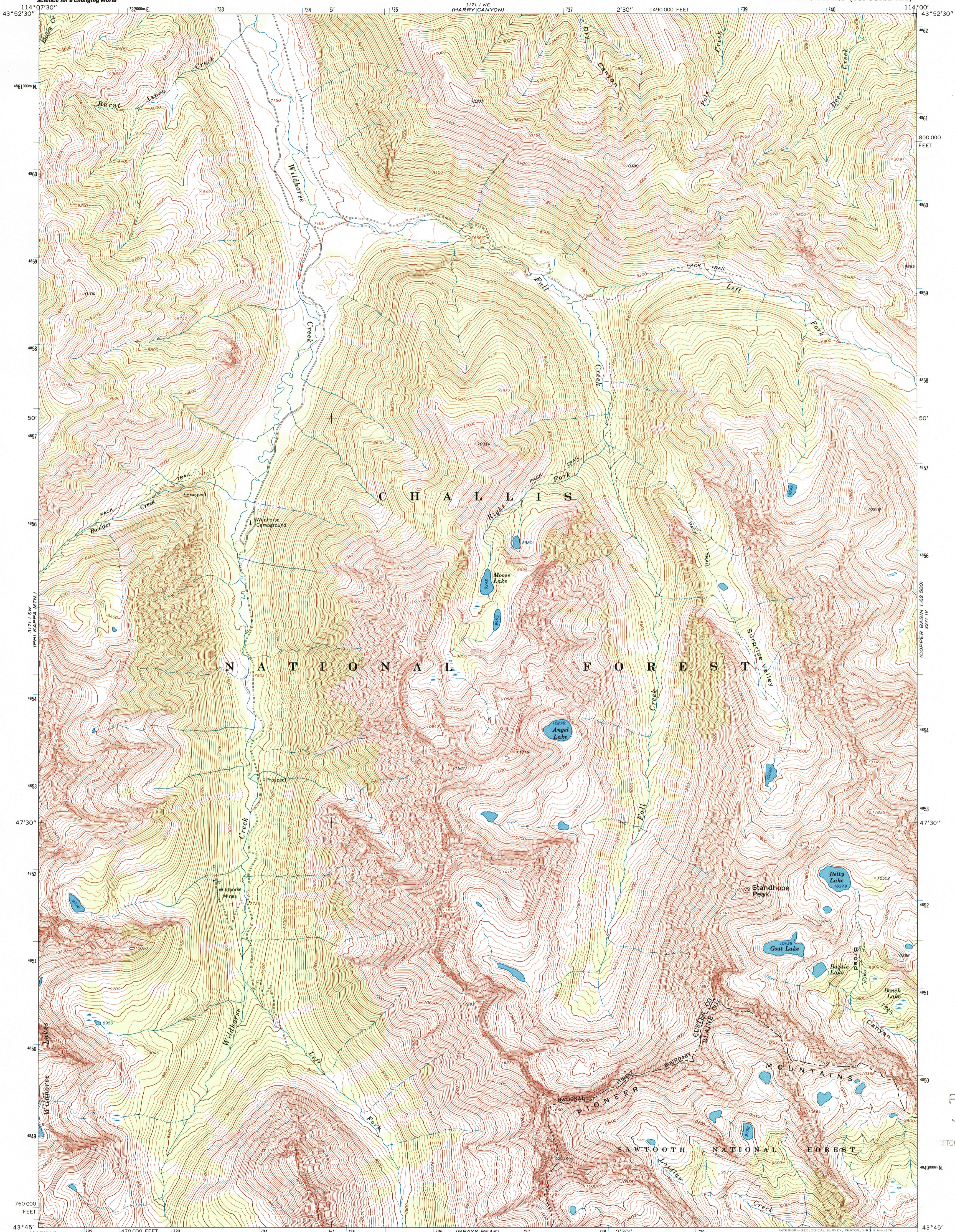
3171 NW
(HERD PEAK)

3271 NE
(COPPER BASIN)



U.S. DEPARTMENT OF THE INTERIOR
U.S. GEOLOGICAL SURVEY

STANDHOPE PEAK QUADRANGLE
IDAHO
7.5 MINUTE SERIES (TOPOGRAPHIC)



RECEIVED
JUL 31 2001

U.S. GEOLOGICAL SURVEY
HISTORICAL MAP ARCHIVES

3171 NW
(HERD PEAK)

3271 NE
(COPPER BASIN)

Mapped, edited, and published by the Geological Survey

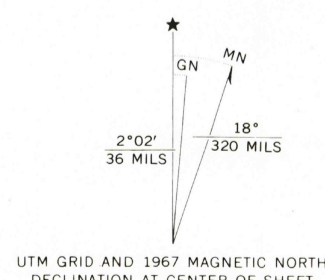
Control by USGS and USC&GS

Topography by photogrammetric methods from aerial
photographs taken 1966. Field checked 1967

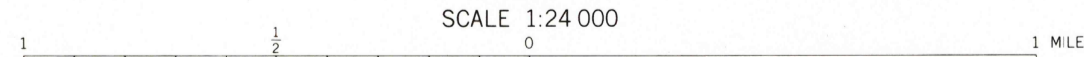
Polyconic projection. 1927 North American datum
10,000-foot grid based on Idaho coordinate system,
central zone

1000-metre Universal Transverse Mercator grid ticks,
zone 11, shown in blue

Land lines have not been established in this area



UTM GRID AND 1967 MAGNETIC NORTH
DECLINATION AT CENTER OF SHEET



SCALE 1:24 000
CONTOUR INTERVAL 40 FEET
NATIONAL GEODETIC VERTICAL DATUM OF 1929



QUADRANGLE LOCATION

ROAD CLASSIFICATION
Light-duty ————— Unimproved dirt - - - - -

STANDHOPE PEAK, IDAHO
N4345-W11400/7.5

1967

AMS 3171 SE—SERIES V893

THIS MAP COMPLIES WITH NATIONAL MAP ACCURACY STANDARDS
FOR SALE BY U.S. GEOLOGICAL SURVEY, P.O. BOX 25286, DENVER, COLORADO 80225
A FOLDER DESCRIBING TOPOGRAPHIC MAPS AND SYMBOLS IS AVAILABLE ON REQUEST