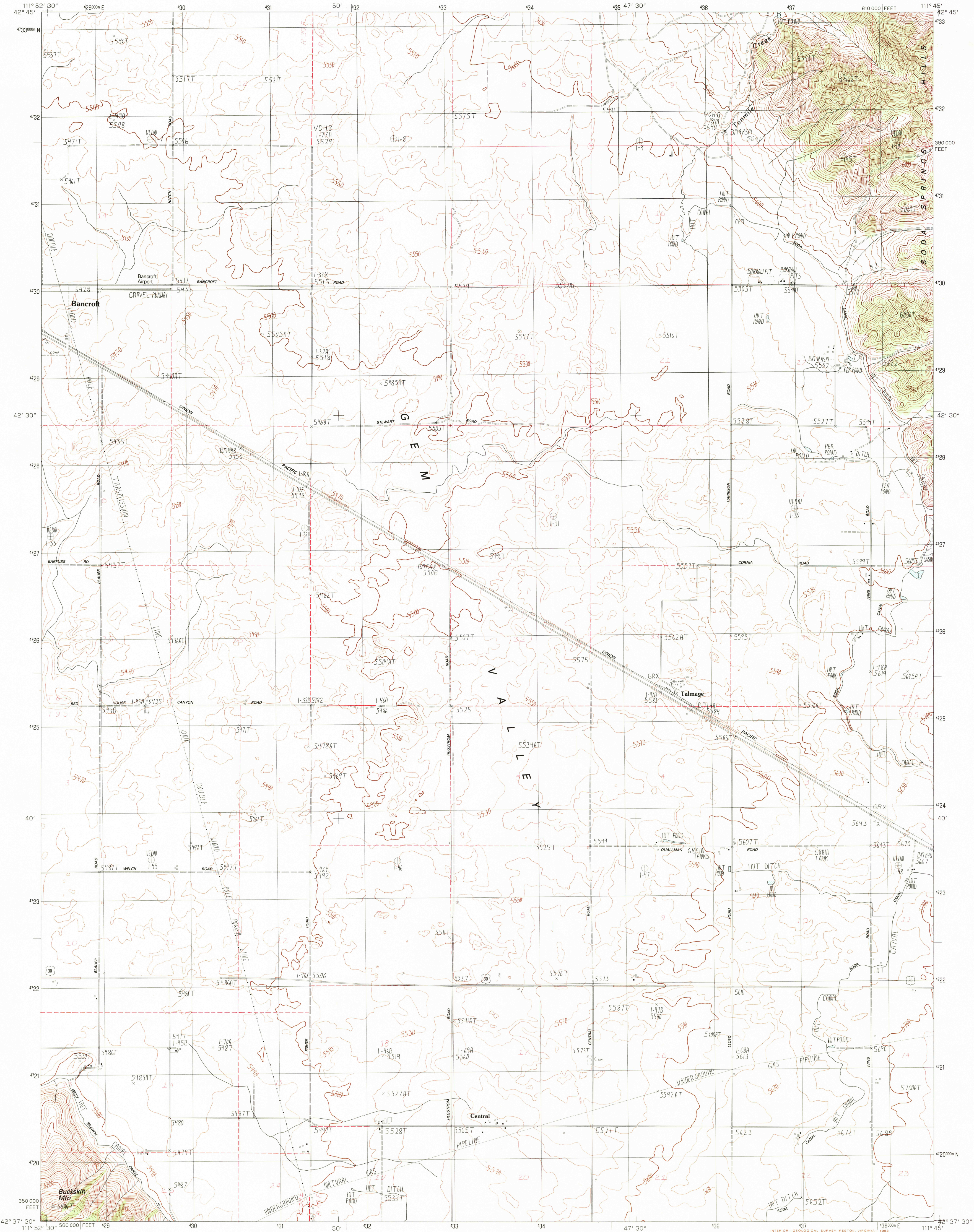


UNITED STATES  
DEPARTMENT OF THE INTERIOR  
GEOLOGICAL SURVEY

TALMAGE QUADRANGLE  
IDAHO—CARIBOU CO.  
7.5 MINUTE SERIES (TOPOGRAPHIC)



PRODUCED BY THE UNITED STATES GEOLOGICAL SURVEY  
CONTROL BY U.S.G.S. NOS. 1000 AND 1001  
FIELD CHECKED BY AERIAL PHOTOGRAPHS TAKEN 1974 AND 1976  
FIELD CHECKED BY AERIAL PHOTOGRAPHS TAKEN 1974 AND 1976  
PROJECTION TRANSVERSE MERCATOR  
GRID: 1000-METER UNIVERSAL TRANSVERSE MERCATOR, ZONE 12  
10,000-FOOT STATE GRID TICS  
UTM GRID DECLINATION 0°33' WEST  
1980 MAGNETIC NORTH DECLINATION 16°00' EAST  
VERTICAL DATUM: 1929  
HORIZONTAL DATUM: 1927 NORTH AMERICAN DATUM  
To place on the predicted North American Datum of 1983,  
move the projection lines as shown by dashed corner ticks  
(12 meters north / 65 meters east)  
There may be private inholdings within the boundaries of any  
Federal and State Reservations shown on this map

PROVISIONAL MAP  
Produced from original  
manuscript drawings. Infor-  
mation shown as of date of  
field check.

THIS MAP COMPLIES WITH NATIONAL MAP ACCURACY STANDARDS  
FOR SALE BY U. S. GEOLOGICAL SURVEY, DENVER, COLORADO 80225, OR RESTON, VIRGINIA 22092

1	2	3	1	Chesterfield
2	3	4	2	Hatch
3	4	5	3	The Dip
4	5	6	4	Bancroft
5	6	7	5	Alexander
6	7	8	6	Sedgwick Peak
			7	Grace Power Plant
			8	Grace

ROAD LEGEND  
Improved Road.....  
Unimproved Road.....  
Trail.....  
Interstate Route U.S. Route State Route

TALMAGE, IDAHO  
PROVISIONAL EDITION 1982

42111-F7-TF-024