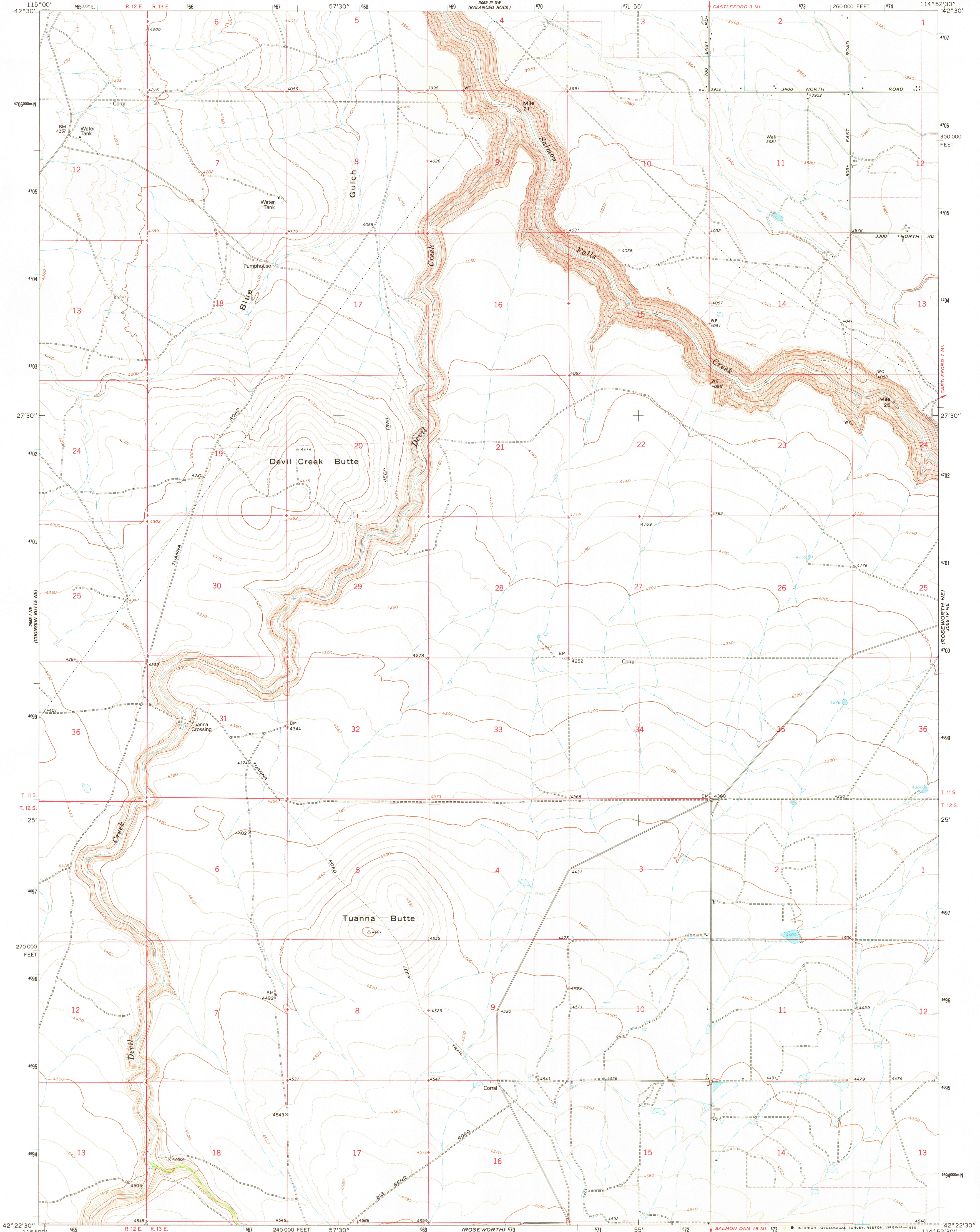


UNITED STATES  
DEPARTMENT OF THE INTERIOR  
GEOLOGICAL SURVEY



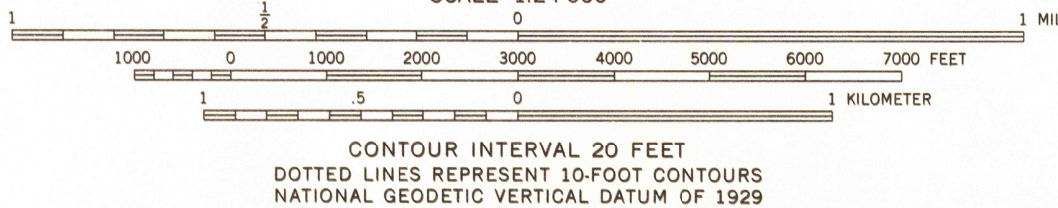
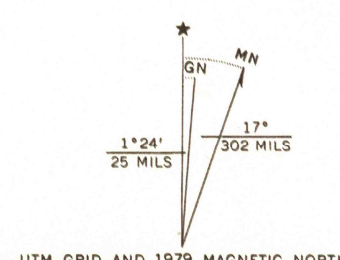
TUANNA BUTTE QUADRANGLE  
IDAHO-TWIN FALLS CO.  
7.5 MINUTE SERIES (TOPOGRAPHIC)

306 111 SE  
(BUHL)



Mapped, edited, and published by the Geological Survey

Control by USGS and NOS/NOAA  
Topography by photogrammetric methods from aerial photographs taken 1961. Field checked 1965  
Revised from aerial photographs taken 1976  
Limited field checked 1979. Map edited 1979  
Polyconic projection. 1927 North American Datum  
10,000-foot grid based on Idaho coordinate system, central zone  
1000-meter Universal Transverse Mercator grid ticks, zone 11, shown in blue  
To place on the predicted North American Datum 1983 move the projection lines 14 meters north and 74 meters east as shown by dashed corner ticks  
Fine red dashed lines indicate selected fence lines



THIS MAP COMPLIES WITH NATIONAL MAP ACCURACY STANDARDS  
FOR SALE BY U. S. GEOLOGICAL SURVEY, DENVER, COLORADO 80225, OR RESTON, VIRGINIA 22092  
A FOLDER DESCRIBING TOPOGRAPHIC MAPS AND SYMBOLS IS AVAILABLE ON REQUEST



ROAD CLASSIFICATION  
Light-duty ————— Unimproved dirt - - - - -

TUANNA BUTTE, IDAHO  
N4222.5-W11452.5/7.5  
1979  
DMA 3068 IV NW-SERIES V893

MAR 25 1980

1900