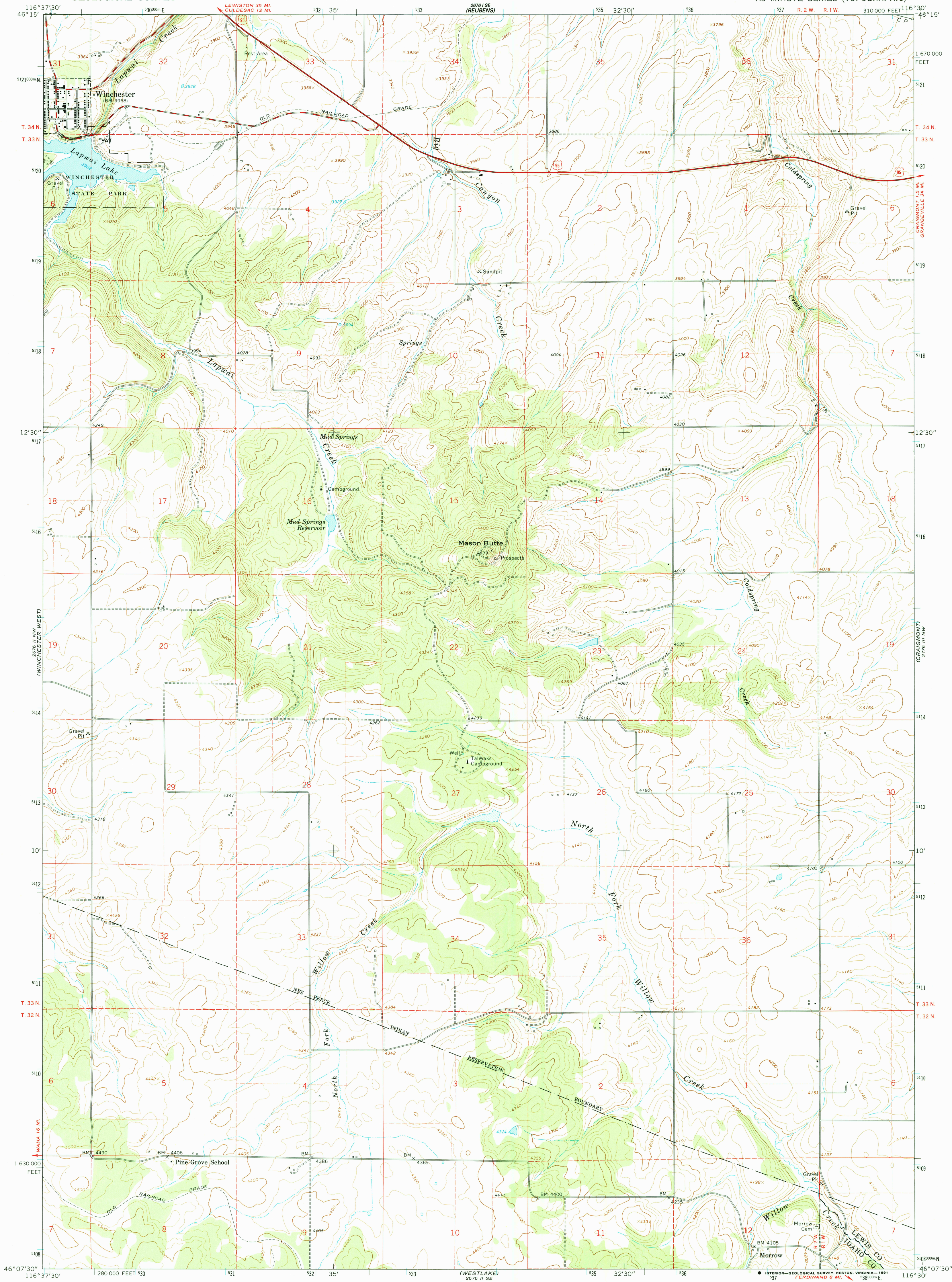


UNITED STATES
DEPARTMENT OF THE INTERIOR
GEOLOGICAL SURVEY

WINCHESTER EAST QUADRANGLE
IDAHO
7.5 MINUTE SERIES (TOPOGRAPHIC)



Mapped, edited, and published by the Geological Survey

Control by USGS and NOS/NOAA

Topography by photogrammetric methods from aerial photographs taken 1966. Field checked 1967

Polyconic projection. 1927 North American Datum 10,000-foot grid based on Idaho coordinate system, west zone 1000-meter Universal Transverse Mercator grid ticks, zone 12 shown in blue

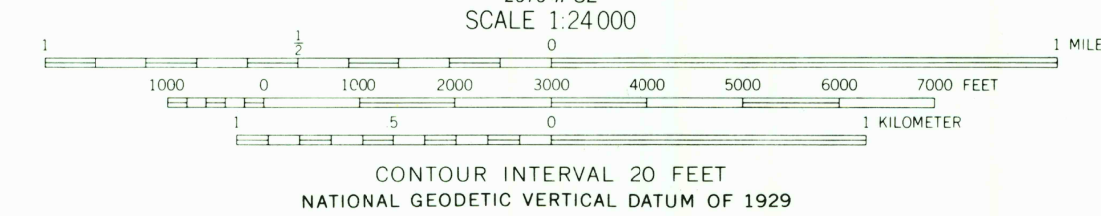
To place on the predicted North American Datum 1983 move the projection lines 16 meters north and 77 meters east as shown by dashed corner ticks

Fine red dashed lines indicate selected fence lines

There may be private holdings within the boundaries of the National or State reservations shown on this map

Map photocopied 1979

No major culture or drainage changes observed



ROAD CLASSIFICATION
Heavy-duty ——— Light-duty ———
Medium-duty ——— Unimproved dirt ———
U.S. Route

WINCHESTER EAST, IDAHO
46116-B5-TF-024

1967
PHOTOINSPECTED 1979
DMA 2676 II NE-SERIES V693

THIS MAP COMPLIES WITH NATIONAL MAP ACCURACY STANDARDS
FOR SALE BY U.S. GEOLOGICAL SURVEY, DENVER, COLORADO 80225, OR RESTON, VIRGINIA 22092
A FOLDER DESCRIBING TOPOGRAPHIC MAPS AND SYMBOLS IS AVAILABLE ON REQUEST

USGS NMD HISTORICAL MAP

MAY 13 1991

REC'D FILE COPY