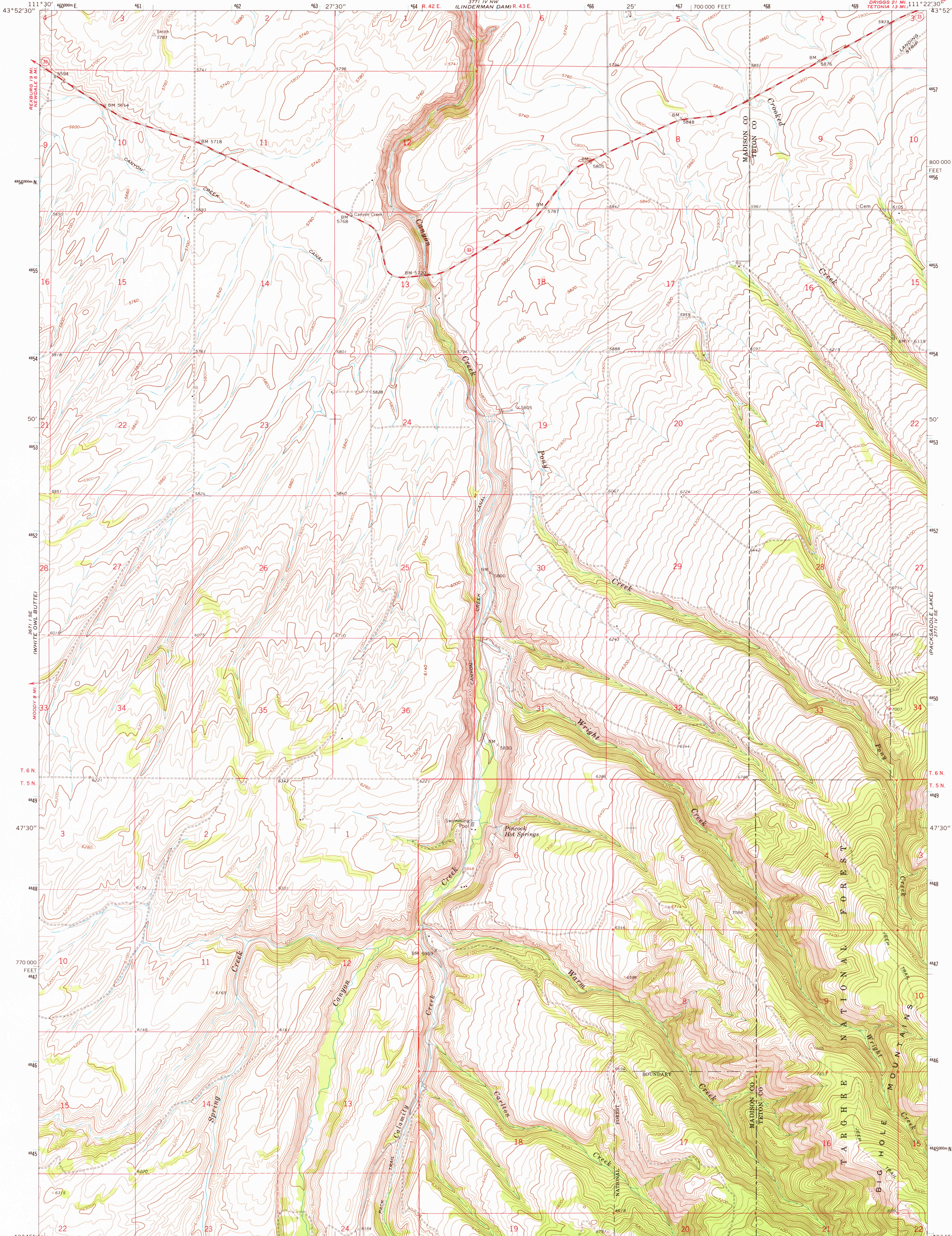


UNITED STATES  
DEPARTMENT OF THE INTERIOR  
GEOLOGICAL SURVEY

WRIGHT CREEK QUADRANGLE  
IDAHO  
7.5 MINUTE SERIES (TOPOGRAPHIC)



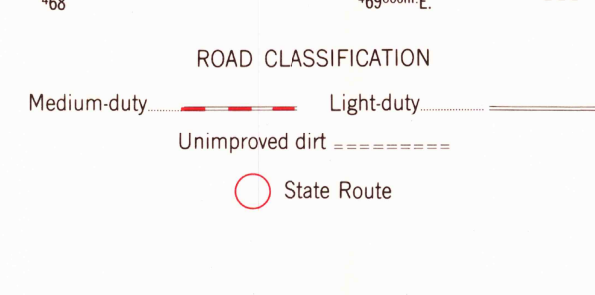
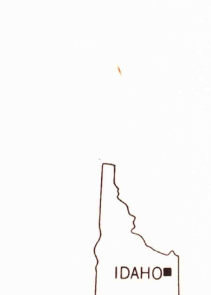
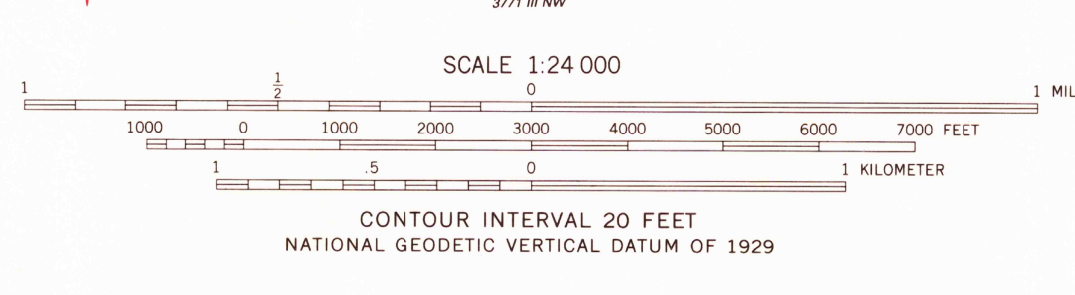
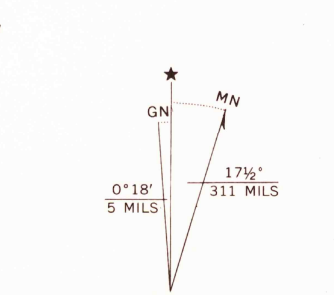
Mapped, edited, and published by the Geological Survey  
Control by USGS and USC&GS

Topography by photogrammetric methods from aerial  
photographs taken 1963. Field checked 1965

Polyconic projection. 1927 North American datum  
10,000-foot grid based on Idaho coordinate system,  
east zone

1000-meter Universal Transverse Mercator grid ticks,  
zone 12, shown in blue

To place on the predicted North American Datum 1983  
move the projection lines 11 meters north and  
64 meters east as shown by dashed corner ticks



WRIGHT CREEK, IDAHO  
N4345—W11122.5/7.5

1965

DMA 3771 IV SW—SERIES V893

THIS MAP COMPLIES WITH NATIONAL MAP ACCURACY STANDARDS  
FOR SALE BY U. S. GEOLOGICAL SURVEY, DENVER, COLORADO 80225, OR RESTON, VIRGINIA 22092  
A FOLDER DESCRIBING TOPOGRAPHIC MAPS AND SYMBOLS IS AVAILABLE ON REQUEST

NOV 15 1982

130