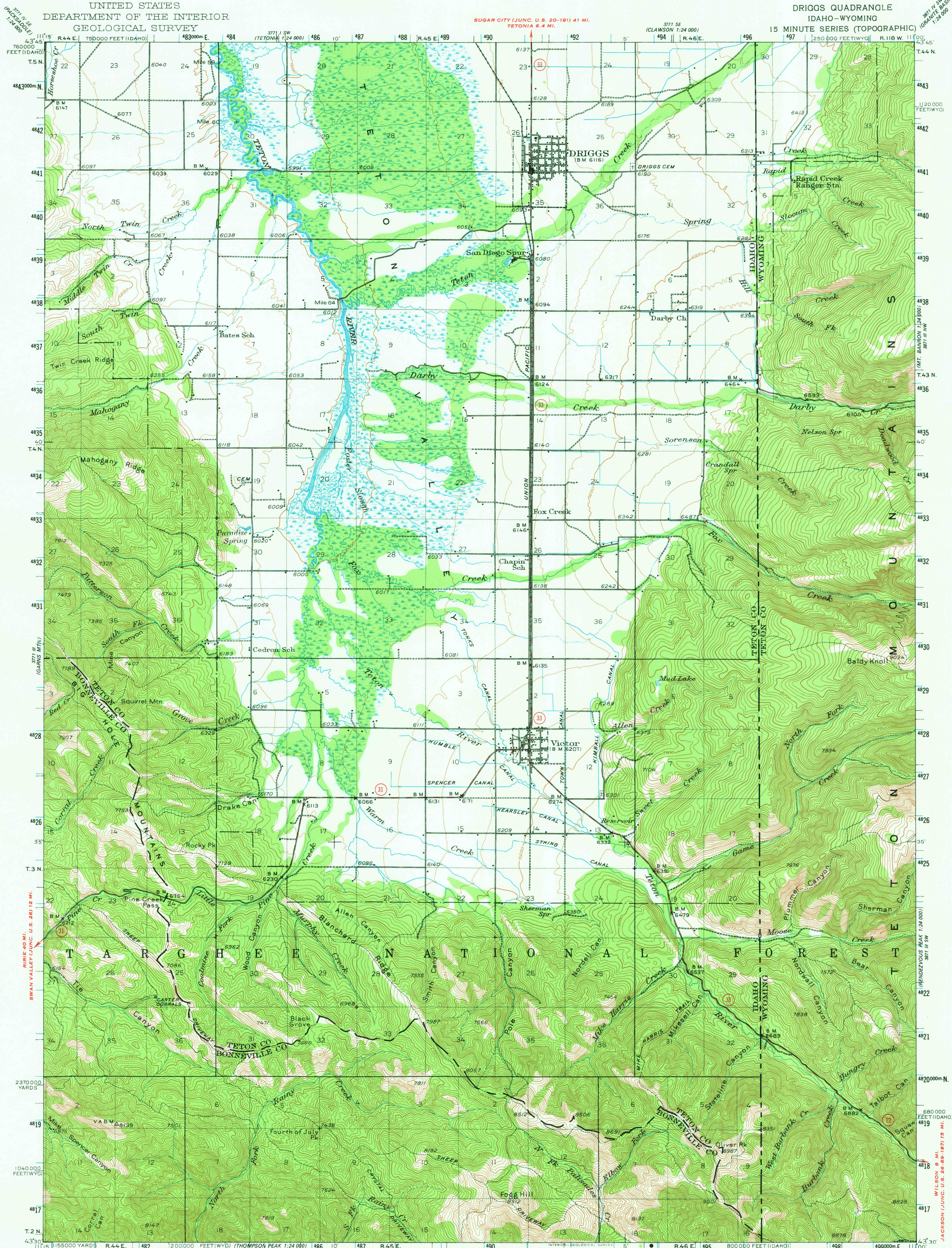
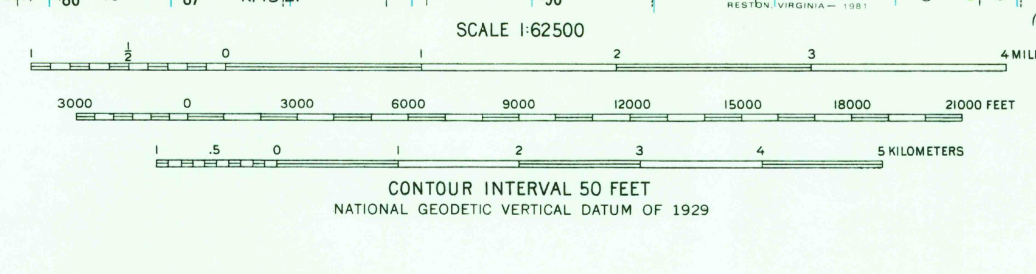
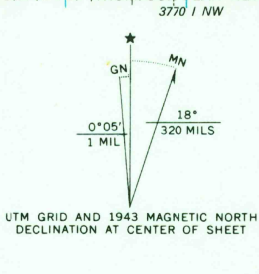


UNITED STATES
DEPARTMENT OF THE INTERIOR
GEOLOGICAL SURVEY

DRIGGS QUADRANGLE
IDAHO-WYOMING
15 MINUTE SERIES (TOPOGRAPHIC)



Map by the Geological Survey
Polyconic projection. 1927 North American datum
5000 yard grid based on U.S. zone system, 1
10 000-foot grids based on Idaho (East) and Wyoming (West)
rectangular coordinate systems.
1000-meter Universal Transverse Mercator grid ticks,
zone 12, shown in blue
To place on the predicted North American Datum 1983
move the projection lines 11 meters north and
63 meters east as shown by dashed corner ticks
There may be private inholdings within the boundaries of
the National or State reservations shown on this map



ROAD CLASSIFICATION
Medium-duty — Light-duty
Unimproved dirt —
State Route
This area is also covered by 7.5-minute, 1:24 000-scale
maps: Bates 1979, Driggs 1978, Victor 1978, and
Fourth of July Peak 1978

FOR SALE BY U.S. GEOLOGICAL SURVEY, DENVER, COLORADO 80225, OR RESTON, VIRGINIA 22092
A FOLDER DESCRIBING TOPOGRAPHIC MAPS AND SYMBOLS IS AVAILABLE ON REQUEST

DRIGGS, IDAHO-WYO.
N4330-W11100/15
1943
DMA 3771 II-SERIES V793

USGS
Historical File
National Mapping Div.

MAR 27 1981
1600