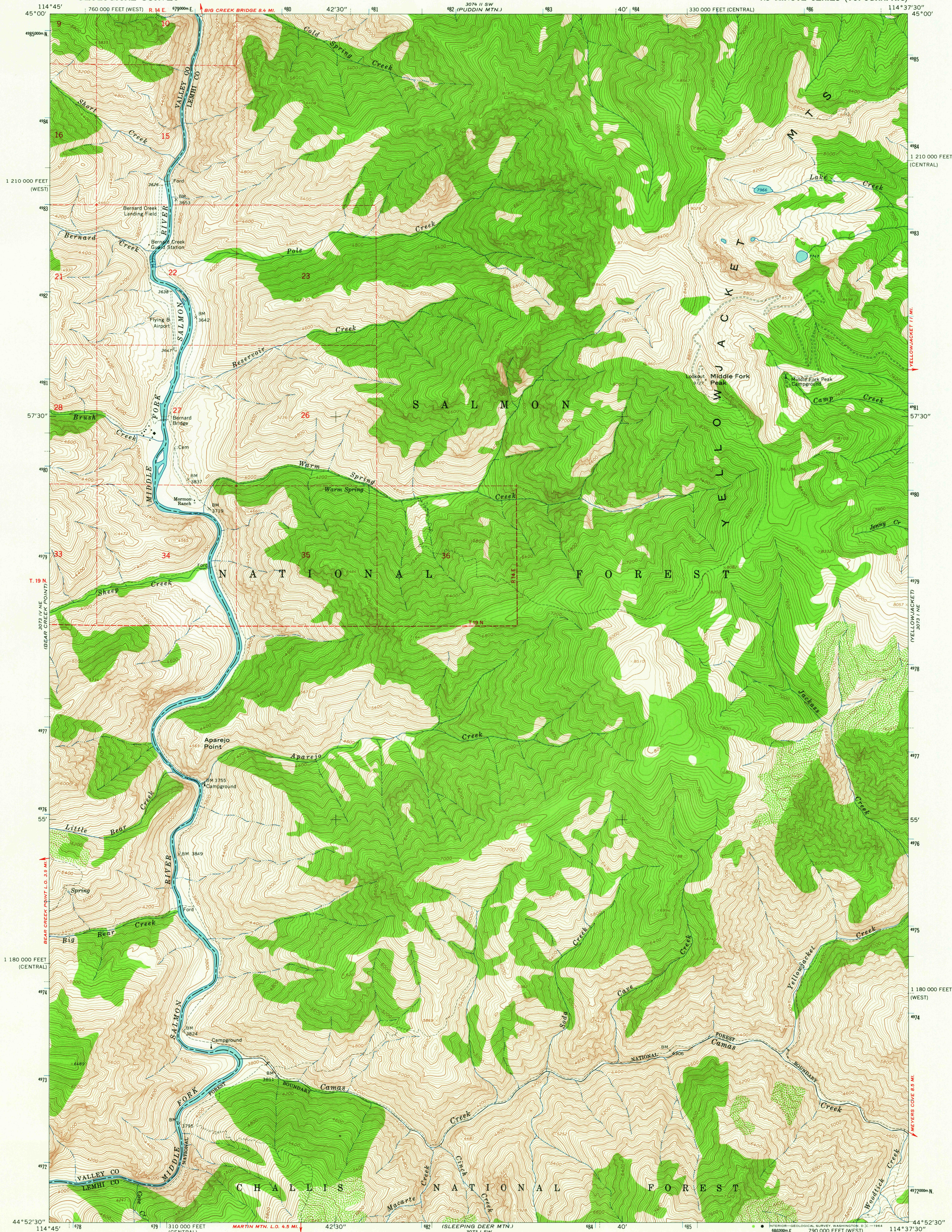
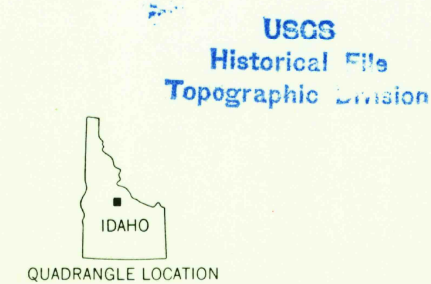
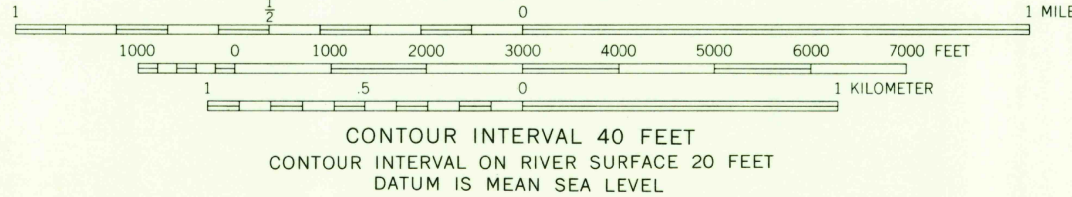
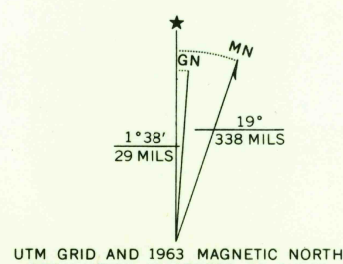


UNITED STATES
DEPARTMENT OF THE INTERIOR
GEOLOGICAL SURVEY

APAREJO POINT QUADRANGLE
IDAHO
7.5 MINUTE SERIES (TOPOGRAPHIC)



Mapped, edited, and published by the Geological Survey
Control by USGS and USC&GS
Topography by photogrammetric methods from aerial
photographs taken 1957. Field checked 1963
Polyconic projection. 1927 North American datum
10,000-foot grids based on Idaho coordinate system,
central and west zones
1000-meter Universal Transverse Mercator grid ticks,
zone 11, shown in blue
Where omitted, land lines have not been established



ROAD CLASSIFICATION
Unimproved dirt =====

APAREJO POINT, IDAHO
N4452.5—W11437.5/7.5

1963

AMS 3073 I NW—SERIES V893

THIS MAP COMPLIES WITH NATIONAL MAP ACCURACY STANDARDS
FOR SALE BY U. S. GEOLOGICAL SURVEY, DENVER 25, COLORADO OR WASHINGTON 25, D. C.
A FOLDER DESCRIBING TOPOGRAPHIC MAPS AND SYMBOLS IS AVAILABLE ON REQUEST

OCT 20 1964

U.S.G.S.
COPY
TOPOGRAPHIC DIVISION