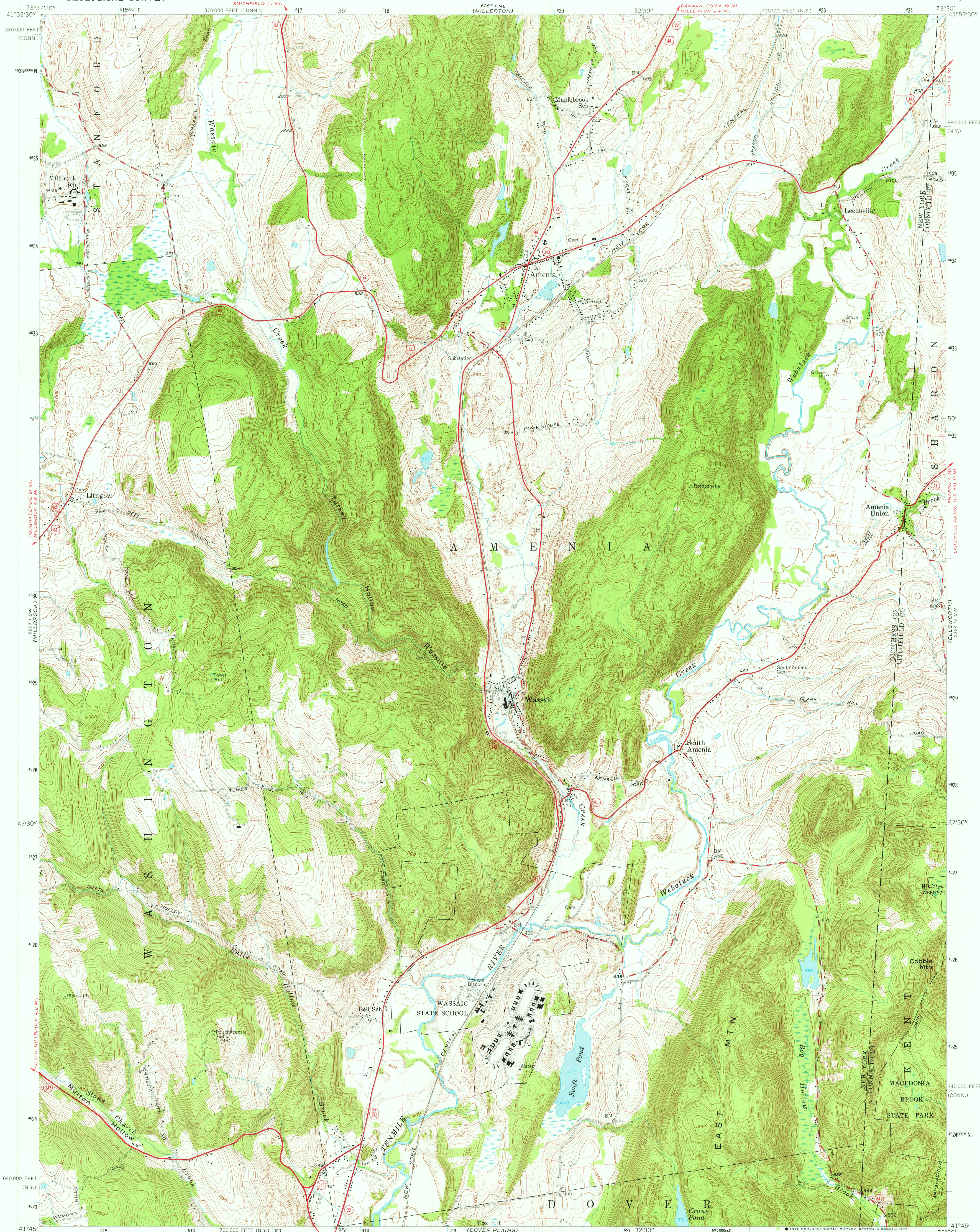


UNITED STATES
DEPARTMENT OF THE INTERIOR
GEOLOGICAL SURVEY

AMENIA QUADRANGLE
NEW YORK-CONNECTICUT
7.5 MINUTE SERIES (TOPOGRAPHIC)



Mapped, edited, and published by the Geological Survey

Control by USGS and USC&GS

Topography from aerial photographs by photogrammetric methods

Aerial photographs taken 1956. Field check 1958

Polyconic projection. 1927 North American datum

10,000-foot grids based on New York coordinate system,

east zone, and Connecticut coordinate system

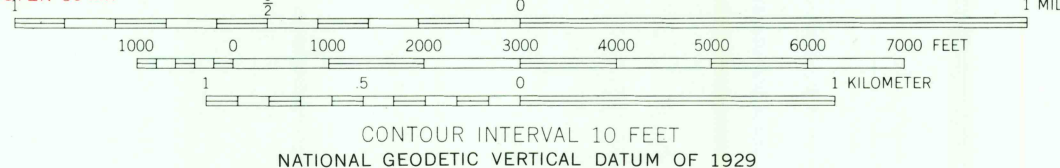
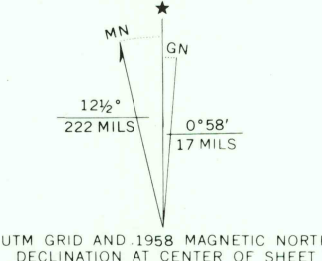
1000-meter Universal Transverse Mercator grid ticks,

zone 18, shown in blue

Fine red dashed lines indicate selected fence and field lines

visible on aerial photographs. This information is unchecked

Unchecked elevations are shown in brown



THIS MAP COMPLIES WITH NATIONAL MAP ACCURACY STANDARDS
FOR SALE BY U.S. GEOLOGICAL SURVEY, RESTON, VIRGINIA 22092
A FOLDER DESCRIBING TOPOGRAPHIC MAPS AND SYMBOLS IS AVAILABLE ON REQUEST



AMENIA, N. Y.-CONN.

N4145-W7330/7.5

1958

USGS
Historical File
Topographic Division
AMS 6267 I SE-SERIES V821

JUN 08 1977

5800