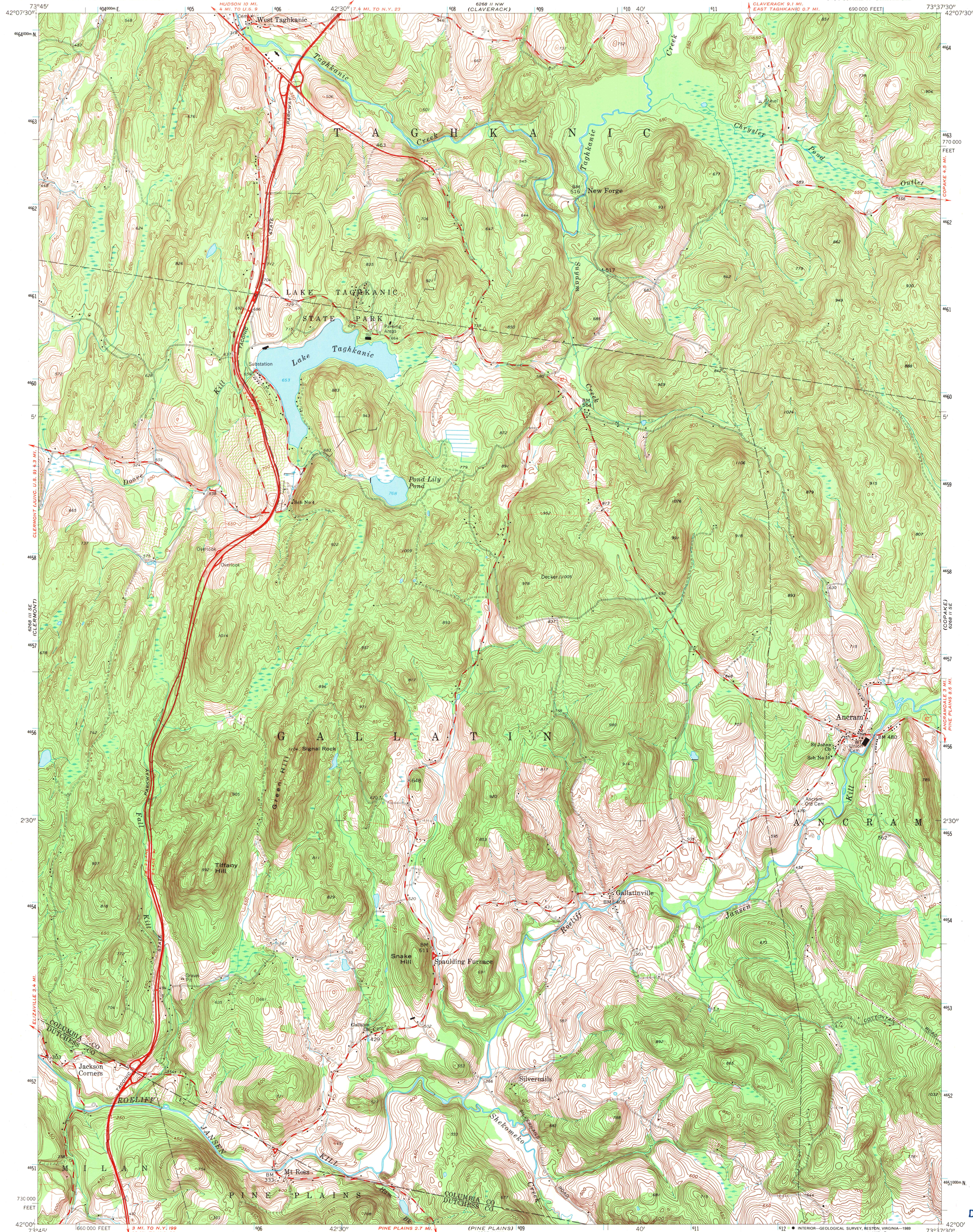
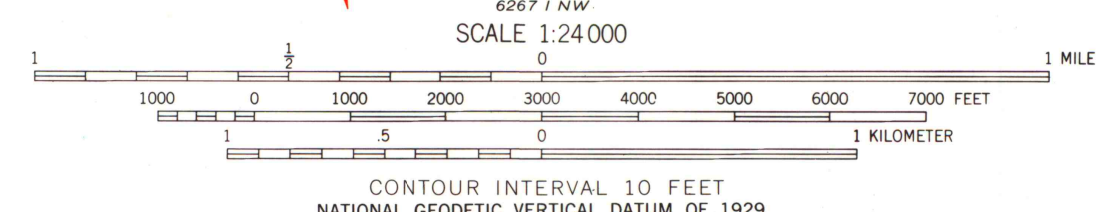
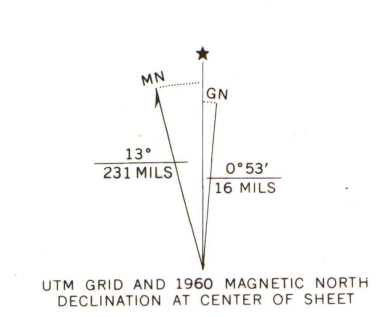


UNITED STATES
DEPARTMENT OF THE INTERIOR
GEOLOGICAL SURVEY

ANCRAM QUADRANGLE
NEW YORK
7.5 MINUTE SERIES (TOPOGRAPHIC)
SW 1/4 COPAKE 15' QUADRANGLE



Mapped, edited, and published by the Geological Survey
Control by USGS and USC&GS
Culture and drainage in part compiled from aerial photographs taken 1942. Topography by planetable surveys 1945. Revised 1960
Polyconic projection. 1927 North American datum
10,000-foot grid based on New York coordinate system, east zone
1000-meter Universal Transverse Mercator grid ticks, zone 18, shown in blue
Fine red dashed lines indicate selected fence and field lines where generally visible on aerial photographs. This information is unchecked
To place on the predicted North American Datum 1983, move the projection lines 6 meters south and 36 meters west as shown by dashed corner ticks
Map photinspected 1978
No major culture or drainage changes observed



THIS MAP COMPLIES WITH NATIONAL MAP ACCURACY STANDARDS
FOR SALE BY U.S. GEOLOGICAL SURVEY
DENVER, COLORADO 80225, OR RESTON, VIRGINIA 22092
A FOLDER DESCRIBING TOPOGRAPHIC MAPS AND SYMBOLS IS AVAILABLE ON REQUEST



ROAD CLASSIFICATION
Heavy-duty ——— Light-duty ———
Medium-duty ——— Unimproved dirt ———
State Route ———

U.S. Regional
Depository Copy
DO NOT DISCARD

A.H. ROBINSON
MAP LIBRARY
NOV 20 1989
University of Wisconsin
Madison

ANCRAM, N. Y.
SW 1/4 COPAKE 15' QUADRANGLE
42073-A6-TF-024
PHOTOINSPECTED 1978
1960
DMA 6268 II SW-SERIES V821