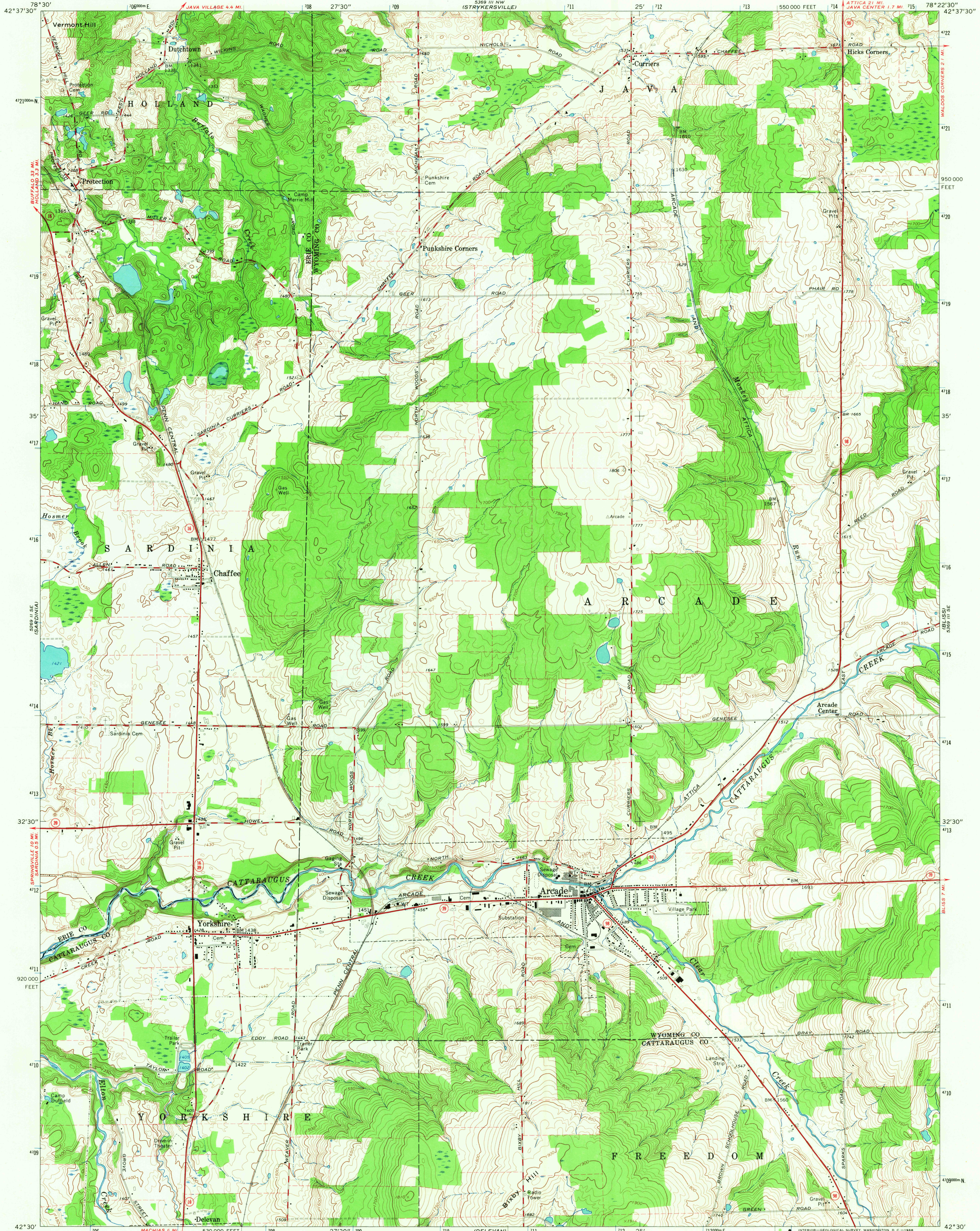


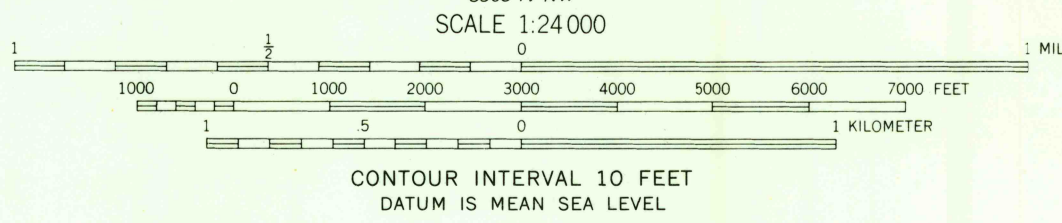
UNITED STATES  
DEPARTMENT OF THE INTERIOR  
GEOLOGICAL SURVEY

ARCADE QUADRANGLE  
NEW YORK  
7.5 MINUTE SERIES (TOPOGRAPHIC)



Mapped, edited, and published by the Geological Survey  
Control by USGS and USC&GS  
Topography by photogrammetric methods from aerial photographs  
taken 1963. Field checked 1966  
Polyconic projection. 1927 North American datum  
10,000-foot grid based on New York coordinate system, west zone  
1000-meter Universal Transverse Mercator grid ticks, zone 17,  
shown in blue  
Fine red dashed lines indicate selected fence and field lines where  
generally visible on aerial photographs. This information is unchecked

UTM GRID AND 1966 MAGNETIC NORTH  
DECLINATION AT CENTER OF SHEET



USGS  
Historical File  
Topographic Division

ROAD CLASSIFICATION  
Heavy-duty ——— Light-duty ———  
Medium-duty ——— Unimproved dirt ———  
State Route —○—



U.S.G.S.  
FILE COPY  
TOPOGRAPHIC DIVISION

ARCADE, N. Y.  
SW 1/4 ARCADE 15' QUADRANGLE  
N4230—W7822.5/7.5

1966  
AMS 5369 III SW—SERIES V821

THIS MAP COMPLIES WITH NATIONAL MAP ACCURACY STANDARDS  
FOR SALE BY U. S. GEOLOGICAL SURVEY, WASHINGTON, D. C. 20242  
A FOLDER DESCRIBING TOPOGRAPHIC MAPS AND SYMBOLS IS AVAILABLE ON REQUEST

2820  
1966