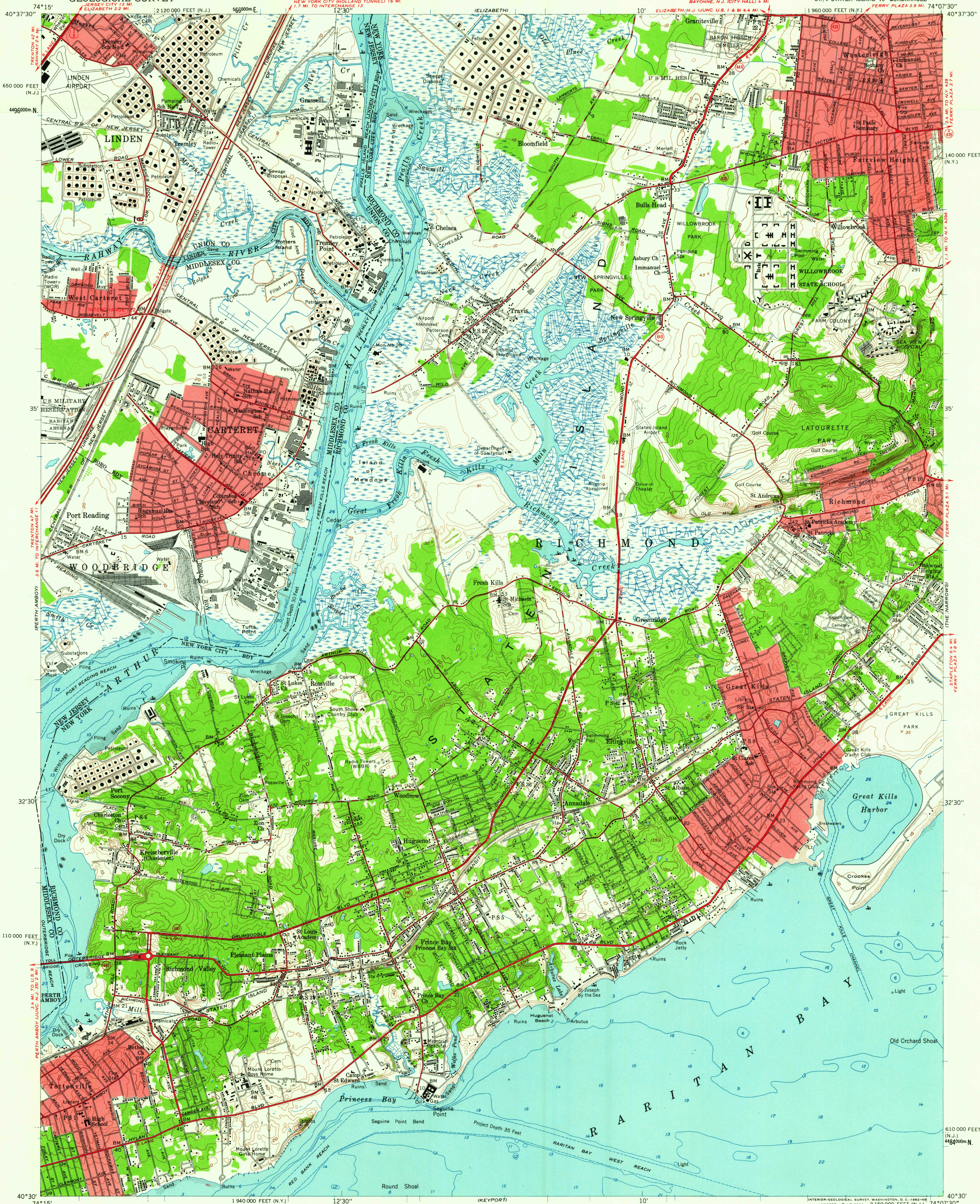
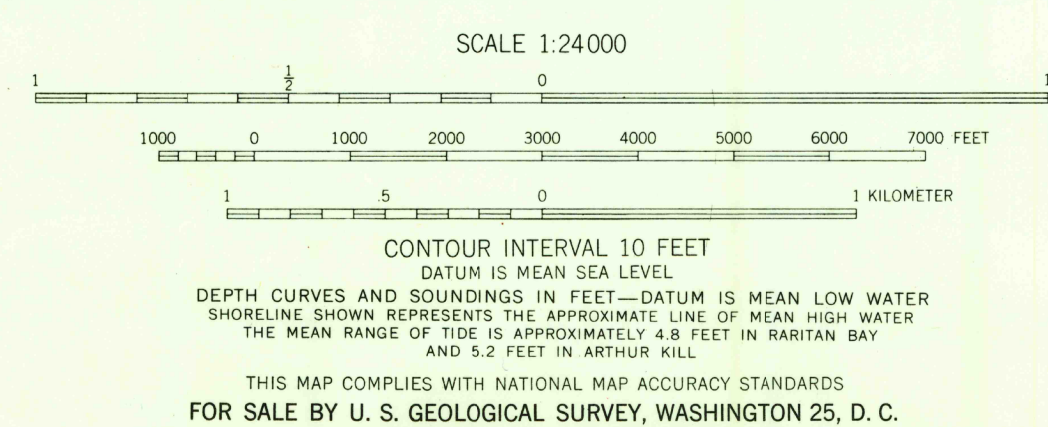


UNITED STATES  
DEPARTMENT OF THE INTERIOR  
GEOLOGICAL SURVEY

ARTHUR KILL QUADRANGLE  
NEW YORK-NEW JERSEY  
7.5 MINUTE SERIES (TOPOGRAPHIC)



Maped, edited, and published by the Geological Survey  
Control by USC&GS, USCE, City of New York Board of Estimate  
and Apportionment, and New Jersey Geodetic Survey  
Culture and drainage in part compiled from aerial photographs  
taken 1954, and from USC&GS charts T-5105, T-5106, T-5107,  
T-5108, T-5109, T-5110, and T-8540. Topography in  
New York by Kelsh plotter from aerial photographs taken 1954.  
Field check 1955. Topography in New Jersey by planetable  
surveys 1955  
Hydrography compiled from USC&GS charts 285 (1955), 286 (1954),  
and 369 (1956)  
Polyconic projection. 1927 North American datum  
10,000-foot grids based on New York coordinate system.  
Long Island zone, and New Jersey coordinate system  
1000-meter Universal Transverse Mercator grid ticks,  
zone 18, shown in blue  
Red tint indicates areas in which only  
landmark buildings are shown  
Unchecked elevations are shown in brown



ROAD CLASSIFICATION  
Heavy-duty ——— Light-duty ———  
Medium-duty ——— Unimproved dirt ———  
U. S. Route ——— State Route ———

ARTHUR KILL, N. Y.—N. J.  
SW/4 STATEN ISLAND 15' QUADRANGLE  
N4030—W7407.5/7.5  
1955

JUN 6 1955