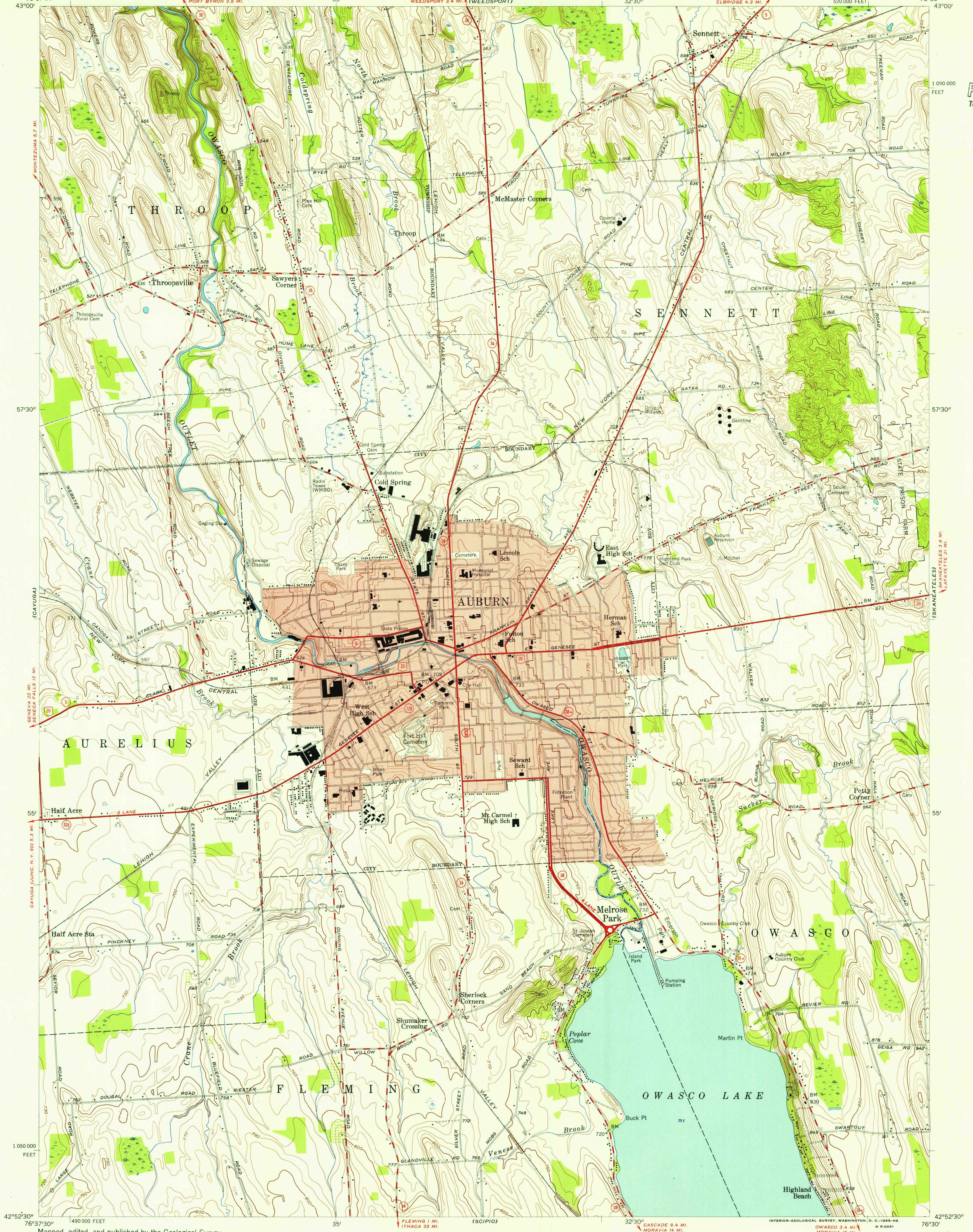
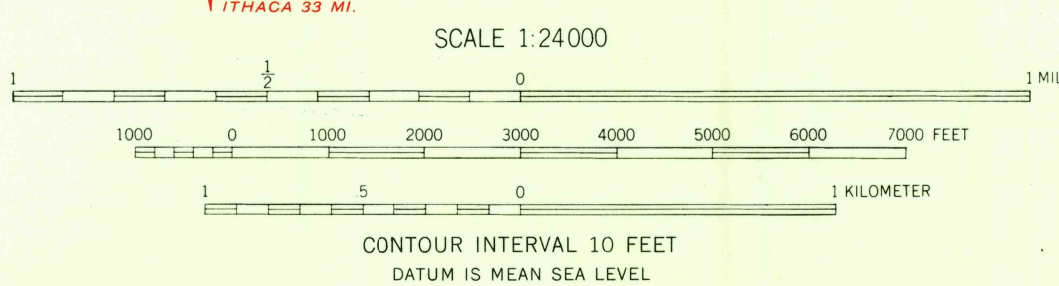


U.S.G.S.
FILE COPY
TOPOGRAPHIC DIVISION



Mapped, edited, and published by the Geological Survey
Control by USGS, USC&GS, and TVA
Culture and drainage in part compiled by Corps of Engineers,
U. S. Army, from aerial photographs taken 1942
Topography by plane-table surveys 1954
Polyconic projection, 1927 North American datum
10,000-foot grid based on New York coordinate system,
central zone
Red tint indicates area in which only
landmark buildings are shown

10°
TRUE NORTH
APPROXIMATE MEAN
DECLINATION, 1954



ROAD CLASSIFICATION
Heavy-duty... Light-duty...
Medium-duty... Unimproved dirt...
U. S. Route... State Route...

AUBURN, N. Y.
NE 1/4 AUBURN 15' QUADRANGLE
N 4252.5-W 7630.7/7.5

U.S.G.S.
FILE COPY
TOPOGRAPHIC DIVISION