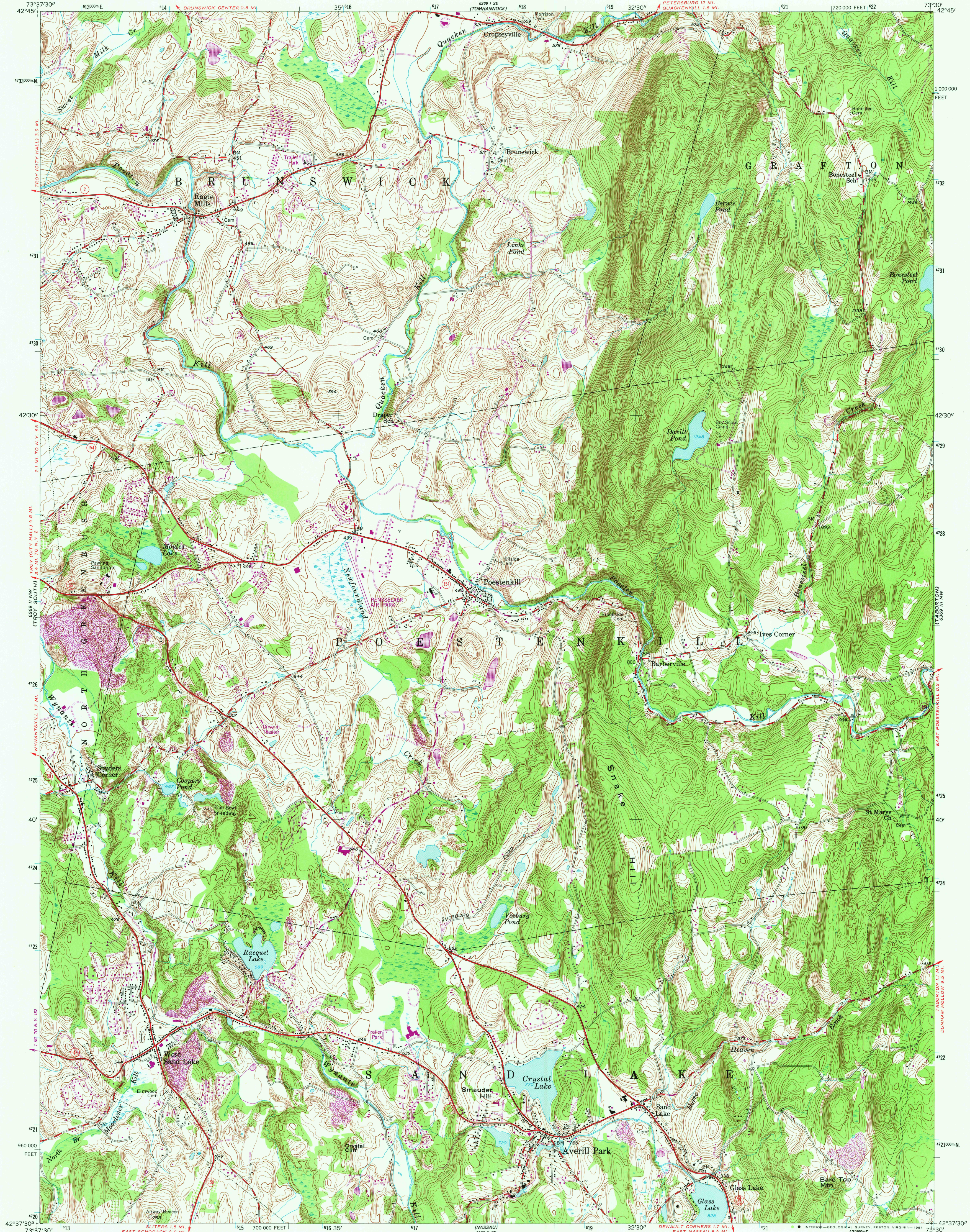


UNITED STATES
DEPARTMENT OF THE INTERIOR
GEOLOGICAL SURVEY

AVERILL PARK QUADRANGLE
NEW YORK—RENSSELAER CO.
7.5 MINUTE SERIES (TOPOGRAPHIC)

6269 1/2 SW
(GRAFTON)



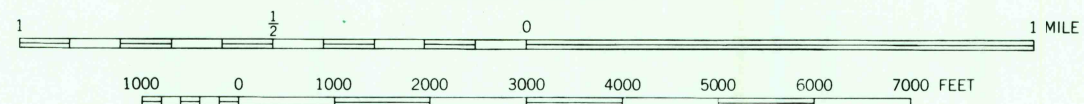
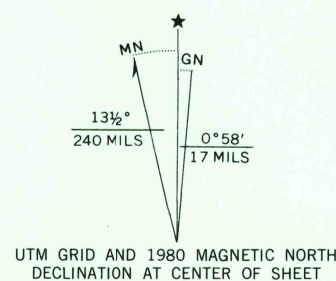
Mapped, edited, and published by the Geological Survey

Control by USGS and NOS/NOAA

Topography by photogrammetric methods from aerial photographs taken 1952. Field checked 1953

Polyconic projection. 10,000-foot grid based on New York coordinate system east zone, 1000-meter Universal Transverse Mercator grid ticks, zone 18, shown in blue. 1927 North American Datum. To place on the predicted North American Datum 1983 move the projection lines 5 meters south and 35 meters west as shown by dashed corner ticks

Revisions shown in purple compiled from aerial photographs taken 1978 and other source data. This information not field checked. Map edited 1980



CONTOUR INTERVAL 10 FEET
NATIONAL GEODETIC VERTICAL DATUM OF 1929

THIS MAP COMPLIES WITH NATIONAL MAP ACCURACY STANDARDS
FOR SALE BY U.S. GEOLOGICAL SURVEY, RESTON, VIRGINIA 22092
A FOLDER DESCRIBING TOPOGRAPHIC MAPS AND SYMBOLS IS AVAILABLE ON REQUEST

ROAD CLASSIFICATION
Heavy-duty ——— Light-duty ———
Medium-duty ——— Unimproved dirt ———
State Route ———



AVERILL PARK, N. Y.

N4237.5—W7330/7.5

1953

PHOTOREVISED 1980
DMA 6269 1/2 NE—SERIES V821

2800
JUN 29 1981
USGS
HISTORICAL FILE
NATIONAL MAPPING DIVISION